

Labeling of *Escherichia coli* Expressed SNAP-tag® Fusion Proteins

Introduction

Escherichia coli (*E. coli*) is the leading host for expression of proteins, primarily due to its ease of use. SNAP-tag technology provides biologists with a versatile tool for expression and labeling of proteins in order to characterize their functions and interactions (1–3). New England Biolabs has introduced the pSNAP-tag (T7)-2 vector which allows a protein of interest to be fused to the N-terminus or C-terminus of an *E. coli* codon optimized SNAP-tag (Figure 1). The expression of SNAP-tagged fusion proteins are under the control of the IPTG-inducible T7/*lac* promoter and can be efficiently expressed using an *E. coli* T7 expression strain of your choice (4). Using this highly flexible system, a single gene construct creates a fusion protein that can be covalently labeled with a fluorophore of your choice, biotin or beads for fluorescent imaging, pull-down or other biochemical analysis (5,6).

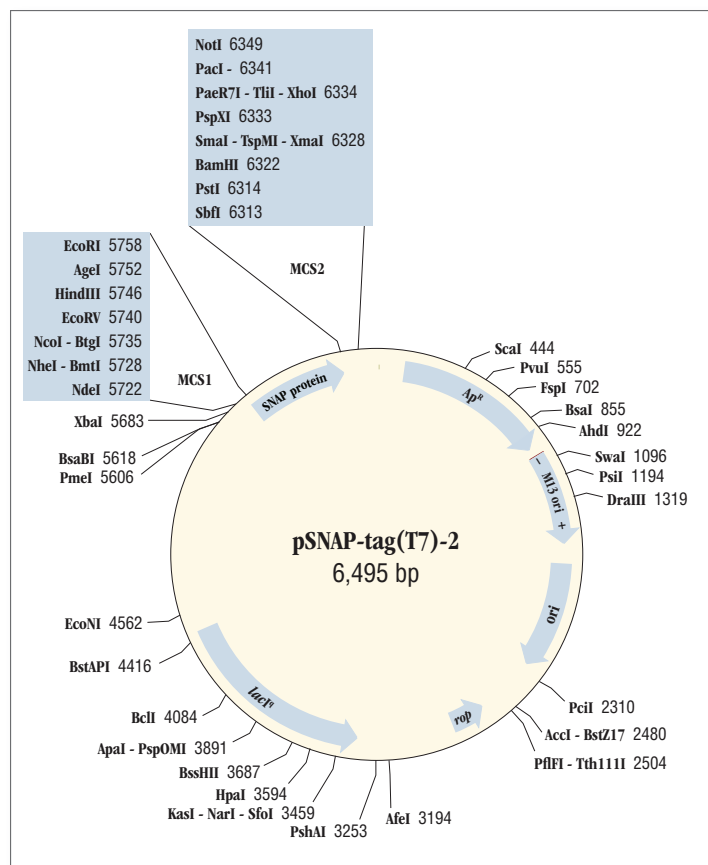


Figure 1: pSNAP-tag(T7)-2 vector map

General Protocol

Cloning: The protein of interest can be expressed with the SNAP-tag (20 kDa) as either a N- or C-terminal in-frame fusion.

- For fusion to the C-terminus of the SNAP-tag, subclone your gene of interest into the 3' multiple cloning site (MCS) of the pSNAP-tag(T7)-2 vector and include a stop codon in the insert at the C-terminus of the fusion gene.

DNA CLONING

DNA AMPLIFICATION & PCR

EPIGENETICS

RNA ANALYSIS

LIBRARY PREP FOR NEXT GEN SEQUENCING

PROTEIN EXPRESSION & ANALYSIS

CELLULAR ANALYSIS

Materials

- pSNAP-tag(T7)-2 Vector (#N9181)
- SNAP-Cell® TMR-Star (#S9105)
- E. coli* T7 Express (#C2566)

Additional Materials

- Growth medium
- Ampicillin
- IPTG
- Phosphate Buffered Saline (PBS)
- Dithiothreitol (DTT)
- 3X SDS Sample buffer (#B7709 or #B7703)

- For expression at the N-terminus of the SNAP-tag, the target gene should be cloned in-frame to the SNAP-tag and no stop codon should be included in the insert.

Expression: pSNAP-tag(T7)-2 can be used for expression in all NEB T7 Express strains: T7 Express Competent *E. coli* (NEB #C2566), T7 Express ^h Competent *E. coli* (NEB #C3016), T7 Express *lysY* Competent *E. coli* (NEB #C3010), T7 Express *lysY/h* Competent *E. coli* (NEB #C3013) and BL21(DE3) (NEB #C2527).

- Grow the transformed cells at 37°C until OD₆₀₀ ~0.5 (or 0.6–0.8 for 15°C induction).
- Induce the cells with 0.4 mM IPTG at 30°C for 3–5 hours or 15°C for 16 hours.
- Harvest the bacteria by centrifuging the culture for 15 min at 5000 x g.
- The bacterial pellets may be stored frozen at -20°C prior to lysis and SDS-PAGE analysis of protein expression. (See Figure 2A)

Labeling in cell lysate:

- Resuspend the cells in 1X PBS supplemented with 1 mM DTT and lyse the cells by sonication.
- Sonicate to lyse the cells and add 10 μM of the substrate.
- Incubate at 37°C for 30 minutes.
- Add 3X SDS Sample buffer and conduct SDS-PAGE.
- Perform in-gel fluorescent detection using a Typhoon™ 9400 Imager (Figure 2B and 2C).

Note: It is possible to label a SNAP-tag fusion protein at a wide range of temperatures (4°–65°C); however, optimization of various parameters (labeling time, substrate concentration etc.) should be conducted. The expressed SNAP-tag fusion protein can also be purified and subsequently labeled in 1X PBS buffer supplemented with 1 mM DTT.

Results

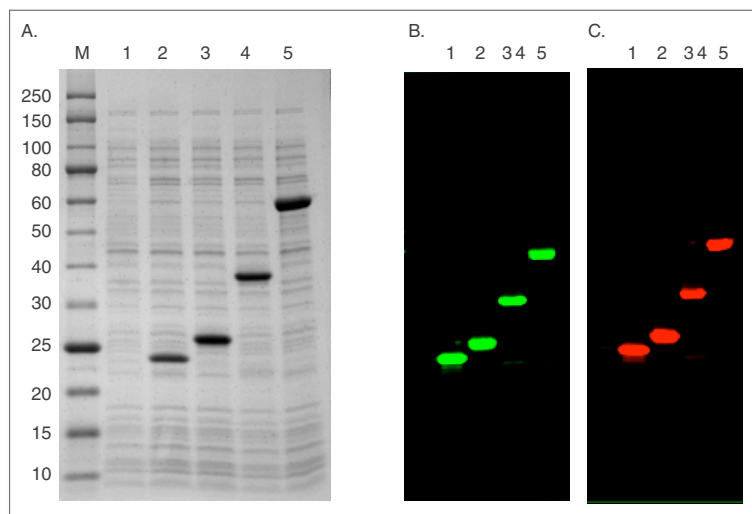


Figure 2. Expression and labeling of SNAP-tag fusions in *E. coli* T7 Express host cells. SNAP-tag(T7)-2 plasmids expressing SNAP-tag (23 kDa, lane 2), SNAP-tag-6XHis-tag-chitin binding domain (27 kD, lane 3), MCP-SNAP-tag-6XHis tag (31 kDa, lane 4) and maltose binding protein-SNAP-tag (63 kD, lane 5) were transformed into *E. coli* T7 Express. Induction was carried out at 30°C for 4 hours. Uninduced cells are present in lane 1. The resulting cell lysates were subjected to SDS-PAGE and stained with Coomassie blue (A), labeled with SNAP-Vista Green (B) or labeled with SNAP-Cell TMR Star (C). The fluorescent signals were detected by Typhoon Imager 9400 with the excitation/emission filter sets of 488/520 nm (B) and 532/580 nm (C). M contains the Protein Ladder (NEB #P7703).

Summary

This note demonstrates the high level expression of SNAP-tag and three SNAP-tag fusion proteins from the pSNAP-tag (T7)-2 vector in *E. coli* T7 Express host cells. Specific protein labeling was readily performed in cell lysates by addition of a fluorescent substrate, either SNAP-Vista Green or SNAP-Cell TMR Star. This bacterial SNAP-tag expression system provides a versatile tool in site-specific labeling of proteins for a variety of applications.

References:

- Keppler, A. et al. (2003) *Nat. Biotechnol.*, 21, 86.
- Gautier, A. et al. (2008) *Chem. Biol.*, 15, 128.
- Keppler, A. et al. (2004) *Proc. Natl. Acad. Sci. USA*, 101, 9955.
- Dubendorff, J.W. and Studier, F.W. (1991) *J. Mol. Biol.*, 219, 45.
- Sun et al. (2011) *Chembiochem* 12, 2217.
- Pellett, P. A. et al. (2011) *Biomed. Opt. Expr.* 2, 2364.

NEW ENGLAND BIOLABS®, SNAP-TAG®, SNAP-CELL® and SNAP-VISTA® are registered trademarks of New England Biolabs, Inc.

TYPHOON™ is a trademark of GE Healthcare.



www.neb.com

NEW ENGLAND
BioLabs®
enabling technologies in the life sciences

New England Biolabs, Inc., 240 County Road, Ipswich, MA 01938-2723 Telephone: (978) 927-5054
Toll Free: (USA Orders) 1-800-632-5227 (USA Tech) 1-800-632-7799 Fax: (978) 921-1350 e-mail: info@neb.com