

NEBNext® Globin & rRNA Depletion Kit (Human/Mouse/Rat)

NEB #E7750S/L/X, #E7755S/L/X

6/24/96 reactions

Version 2.0_11/20

Table of Contents

| | |
|------------------------------------------------------------------------------------------------------------------|----|
| Required Materials Not Included..... | 2 |
| Overview..... | 3 |
| Applications | 4 |
| Section 1 | |
| Protocol | 4 |
| Section 2 | |
| Protocol for use with NEBNext Ultra™ II Directional RNA Library Prep Kit for Illumina® (NEB #E7760)..... | 7 |
| Section 3 | |
| Protocol for use with NEBNext Ultra II RNA Library Prep Kit for Illumina (NEB #E7770)..... | 15 |
| Section 4 | |
| Appendix for use with NEBNext Ultra II RNA and Directional RNA Library Prep Kits for Illumina | 23 |
| Section 5 | |
| Troubleshooting Guide for use with NEBNext Ultra II RNA and Directional RNA Library Prep Kits for Illumina | 26 |
| Kit Components..... | 28 |
| Checklist | 30 |
| Revision History..... | 31 |

The Kit Includes

The volumes provided are sufficient for preparation of up to 6 reactions (NEB #E7750S/#E7755S) 24 reactions (NEB #E7750L/#E7755L) and 96 reactions (NEB #E7750X/#E7755X).

Package 1: Store at –20°C.

- (white) NEBNext Globin and rRNA Depletion Solution
 - (white) Probe Hybridization Buffer
 - (white) NEBNext Thermostable RNase H
 - (white) RNase H Reaction Buffer
 - (white) NEBNext DNase I
 - (white) DNase I Reaction Buffer
- Nuclease-free Water

Package 2: Store at 4°C. Do not freeze.

Supplied only with NEBNext Globin and rRNA Depletion Kit (Human/Mouse/Rat) with RNA Sample Purification Beads, NEB #E7755.

NEBNext RNA Sample Purification Beads

Required Materials Not Included

- Magnetic rack (NEB #S1515), magnetic plate (Alpaqua® cat. #A001322) or equivalent
- 80% Ethanol (freshly prepared)
- Microcentrifuge
- Vortex Mixer
- Thermocycler
- Thin wall 200 µl PCR tubes
- Bioanalyzer®, TapeStation® (Agilent Technologies, Inc.) or similar fragment analyzer and consumables

For NEB #E7750 only:

- Agencourt® RNAClean® XP Beads (Beckman Coulter, Inc. #A63987)

For use with NEBNext Ultra II Directional RNA Library Prep Kit for Illumina (NEB #E7760/E7765) & NEBNext Ultra II RNA Library Prep Kit for Illumina (NEB #E7770/NEB#E7775):

- Adaptors and Primers:
 - NEBNext www.neb.com/oligos
 - Alternatively, customer supplied adaptor and primers
www.neb.com/faq-nonNEB-adaptors

For NEB #E7760 & NEB #E7770:

- SPRISelect Reagent Kit (Beckman Coulter, Inc. #B23317) or AMPure® XP Beads (Beckman Coulter, Inc. #A63881)
- In NEB #E7765 & NEB #E7775, beads are included [Sample Purification Beads (NEB #E7767)]

Overview

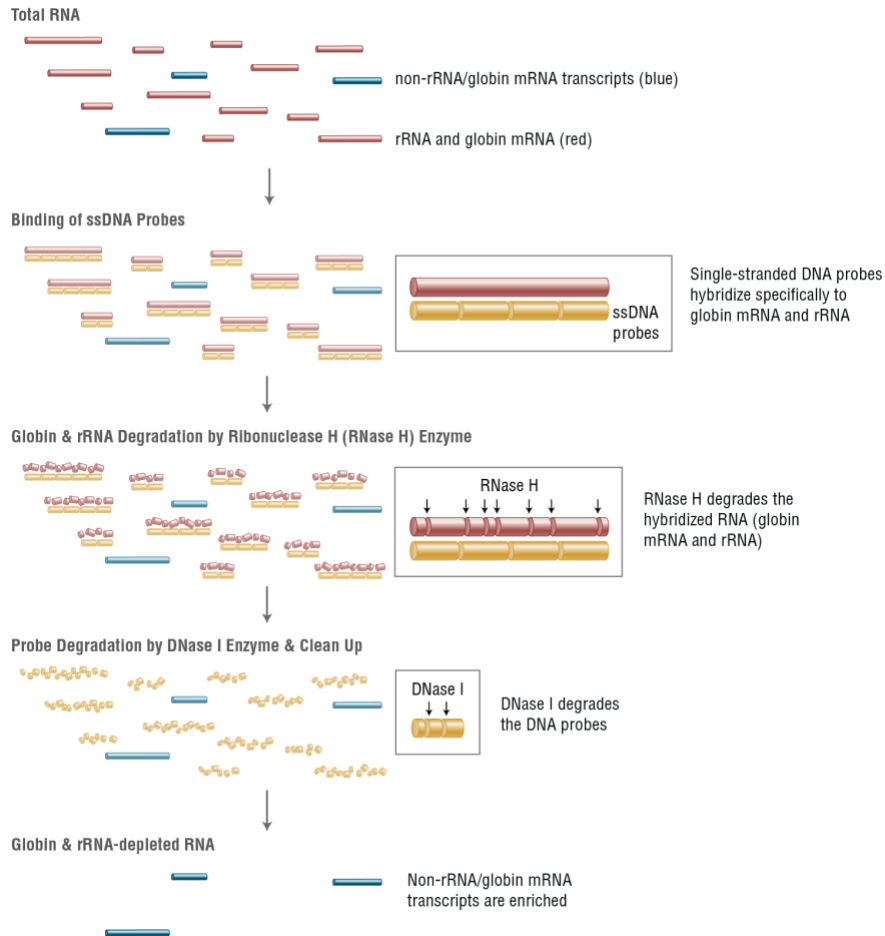
The NEBNext Globin and rRNA Depletion Kit (Human/Mouse/Rat) employs the NEBNext RNase H-based RNA Depletion Workflow to deplete the following:

- Globin mRNA (HBA 1/2, HBB, HBD, HBM, HBG1/2, HBE, HBQ1 and HBZ)
- Cytoplasmic rRNA (5S, 5.8S, 18S, 28S, ITS and ETS)
- Mitochondrial rRNA (12S and 16S)

The kit is effective with human, mouse and rat total RNA preparations, both intact and degraded.

The kit can also be used following poly (A) mRNA enrichment (e.g., using the NEBNext poly(A) mRNA Magnetic Isolation Module, NEB #E7490), so that the final depleted RNA contains only mRNA of interest and not non-coding RNA.

Figure 1. NEBNext RNase H-based Globin and rRNA Depletion Workflow.



Total RNA is hybridized with DNA probes targeting unwanted abundant RNAs (globin mRNA and rRNA), followed by an RNase H digestion where the enzyme recognizes the RNA:DNA hybrid and degrades the targeted RNA. Finally, the DNA probes are digested with DNaseI, and the reaction is cleaned using magnetic beads.

| Kit | Input Amount | Time | | | | Workflow Time |
|-----|--------------|---------------------------|-------------------|-------------------------------------|----------|--------------------------------|
| | | RNA/Probe Hybridization | RNase H Digestion | DNase I Digestion of the DNA probes | Clean Up | |
| | | Hands-On 2 min. | 2 min. | 2 min. | 2 min. | Hands-On 8 min. |
| | | Total 22 min. | 32 min. | 32 min. | 27 min. | Total 1 hr., 53 min. |

The protocol supports globin mRNA and rRNA depletion from 10 ng-1 µg total RNA and can be completed in approximately two hours.

Applications

The resulting globin and rRNA-depleted RNA is suitable for RNA-Seq, random-primed cDNA synthesis, or other downstream RNA analysis applications.

When using the NEBNext Globin and rRNA Depletion Kit (Human/Mouse/Rat; NEB #E7750 or #E7755) for RNA-Seq library preparation with the NEBNext kits listed below please follow the appropriate section in this manual.

- NEBNext Ultra II Directional RNA Library Prep Kit for Illumina (NEB #E7760), Section 2
- NEBNext Ultra II RNA Library Prep Kit for Illumina (NEB #E7770), Section 3

Section 1: Protocol

Symbols



This caution sign signifies a step in the protocol that has two paths leading to the same end point but is dependent on a user variable, like the type of RNA input.



This is a point where you can safely stop the protocol and store the samples prior to proceeding to the next step in the protocol.



Colored bullets indicate the cap color of the reagent to be added.

Master Mixes can be prepared for steps 1.1.2, 1.2.1, 1.3.1 immediately before use.

RNA Sample Requirements

RNA Integrity:

Assess the size and quality of the input RNA by running the RNA sample on an Agilent Bioanalyzer RNA 6000 Nano/Pico Chip to determine the RNA Integrity Number (RIN). In the RNA-Seq library preparation application, RNA with different RIN values require different fragmentation times or no fragmentation at all.

RNA Sample Requirements:

The RNA sample should be free of salts (e.g., Mg^{2+} , or guanidinium salts) or organics (e.g., phenol and ethanol). RNA must be free of DNA. gDNA is a common contaminant from RNA preps. It may be carried over from the interphase of organic extractions or when the silica matrix of solid phase RNA purification methods is overloaded. If the total RNA sample may contain gDNA contamination, treat the sample with DNase I to remove all traces of DNA (not provided in this kit). After treatment with DNase I the enzyme should be removed from the sample. Any residual activity of DNase I will degrade the single stranded DNA probes necessary for the ribosomal depletion. DNase I can be removed from the extraction using phenol/ chloroform extraction and ethanol precipitation or silica column methods such as the Monarch[®] RNA Cleanup Kit (NEB #T2030). Contaminating DNA can cause inaccurate RNA quantification and impede proper globin mRNA and rRNA removal.

Input Amount Requirements

This protocol requires 10 ng–1 µg total RNA (DNA free) in a maximum of 10 µl of nuclease-free water, quantified by an RNA-specific dye-assisted fluorometric method (e.g., Qubit[®], RiboGreen[®]), and quality checked by Bioanalyzer.

1.1. Hybridize the Probes to the RNA

- 1.1.1. Dilute 10 ng–1 µg of total RNA with nuclease-free water to a final volume of 10 µl in a PCR tube. Keep the RNA on ice.
- 1.1.2. Assemble the following RNA/Probe hybridization reaction on ice:

| RNA/PROBE HYBRIDIZATION REACTION | VOLUME |
|---------------------------------------------------------|--------|
| ○ (white) Total RNA in nuclease-free water (10 ng–1 µg) | 10 µl |
| ○ (white) NEBNext Globin and rRNA Depletion Solution | 3 µl |
| ○ (white) Probe Hybridization Buffer | 2 µl |
| Total Volume | 15 µl |

- 1.1.3. Mix thoroughly by gently pipetting up and down at least 10 times. **Note: Its crucial to mix well at this step.**
- 1.1.4. Briefly spin down the tube in a microcentrifuge to collect the liquid from the side of the tube.

- 1.1.5. Place the tube in a pre-heated thermocycler and run the following program with the heated lid set at 105°C. This program will take approximately 15–20 minutes to complete:

| TEMPERATURE | TIME |
|-------------------|-----------|
| 95°C | 2 minutes |
| Ramp down to 22°C | 0.1°C/sec |
| Hold at 22°C | 5 minutes |

- 1.1.6. Briefly spin down the tube in a microcentrifuge, and place on ice. Proceed immediately to the RNase H Digestion.

1.2. RNase H Digestion

- 1.2.1. Assemble the following RNase H Digestion Reaction on ice:

| RNASE H DIGESTION REACTION | VOLUME |
|----------------------------------------|--------|
| Hybridized RNA (Step 1.1.6) | 15 µl |
| ○ (white) NEBNext Thermostable RNase H | 2 µl |
| ○ (white) RNase H Reaction Buffer | 2 µl |
| Nuclease-free Water | 1 µl |
| Total Volume | 20 µl |

- 1.2.2. Mix thoroughly by gently pipetting up and down at least 10 times.
 1.2.3. Briefly spin down the tube in a microcentrifuge.
 1.2.4. Incubate the tube in a pre-heated thermocycler for **30 minutes at 50°C** with the lid set at 55°C.
 1.2.5. Briefly spin down the tube in a microcentrifuge, and place on ice. Proceed immediately to the DNase I Digestion.

1.3. DNase I Digestion

- 1.3.1. Assemble the following DNase I Digestion Reaction on ice:

| DNASE I DIGESTION REACTION | VOLUME |
|-----------------------------------|---------|
| RNase H treated RNA (Step 1.2.5) | 20 µl |
| ○ (white) DNase I Reaction Buffer | 5 µl |
| ○ (white) NEBNext DNase I | 2.5 µl |
| Nuclease-free Water | 22.5 µl |
| Total Volume | 50 µl |

- 1.3.2. Mix thoroughly by pipetting up and down at least 10 times.
 1.3.3. Briefly spin down the tube in a microcentrifuge.
 1.3.4. Incubate the tube in a pre-heated thermocycler for **30 minutes at 37°C** with the lid set at 40°C or off.
 1.3.5. Briefly spin down the tube in a microcentrifuge and place on ice. Proceed immediately to the RNA Purification step.

1.4. RNA Purification Using Agencourt RNAClean XP Beads or NEBNext RNA Sample Purification Beads

- 1.4.1. Vortex the Agencourt RNAClean XP Beads or NEBNext RNA Sample Purification Beads to resuspend.
 1.4.2. Add 90 µl (1.8X) beads to the RNA Sample from Step 1.3.5 and mix thoroughly by pipetting up and down at least 10 times.
 1.4.3. Incubate the tube for **15 minutes on ice** to bind the RNA to the beads.
 1.4.4. Place the tube on a magnetic rack to separate the beads from the supernatant.
 1.4.5. After the solution is clear, carefully remove and discard the supernatant. Be careful not to disturb the beads which contain the RNA.
 1.4.6. Add 200 µl of freshly prepared 80% ethanol to the tube while in the magnetic rack. Incubate at room temperature for 30 seconds, and then carefully remove and discard the supernatant. Be careful not to disturb the beads which contain the RNA.
 1.4.7. Repeat Step 1.4.6 once for a total of two washes.
 1.4.8. Completely remove residual ethanol, and air dry the beads for up to 5 minutes while the tube is on the magnetic rack with the lid open.

Caution: Do not over-dry the beads. This may result in lower recovery of RNA target. Elute the samples when the beads are still dark brown and glossy looking, but when all visible liquid has evaporated. When the beads turn lighter brown and start to crack they are too dry.

- 1.4.9. Remove the tube from the magnetic rack. Elute the RNA from the beads by adding 7 μ l of nuclease-free water. Mix thoroughly by pipetting up and down at least 10 times and briefly spin the tube.
- 1.4.10. Incubate the tube for 2 minutes at room temperature.
- 1.4.11. Place the tube on the magnetic rack until the solution is clear (~ 2 minutes).
- 1.4.12. Remove 5 μ l of the supernatant containing RNA and transfer to a nuclease-free tube.
- 1.4.13. Place the tube on ice and proceed with RNA-Seq library construction or other downstream application. Alternatively, the sample can be stored at -80°C.



Section 2

Protocol for use with NEBNext Ultra II Directional RNA Library Prep Kit for Illumina (NEB #E7760)

Symbols



This caution sign signifies a step in the protocol that has two paths leading to the same end point but is dependent on a user variable, like the type of RNA input.



This is a point where you can safely stop the protocol and store the samples prior to proceeding to the next step in the protocol.



Colored bullets indicate the cap color of the reagent to be added.

This protocol has been optimized for approximately 200 nt RNA inserts. To generate libraries with longer RNA insert sizes, refer to the Appendix (Section 4) for recommended fragmentation times and size selection conditions.

Keep all of the buffers on ice, unless otherwise indicated.

RNA Sample Requirements

RNA Integrity:

Assess the size and quality of the input RNA by running the RNA sample on an Agilent Bioanalyzer RNA 6000 Nano/Pico Chip to determine the RNA Integrity Number (RIN). In the RNA-Seq library preparation application, RNA with different RIN values require different fragmentation times or no fragmentation at all.

RNA Sample Requirements:

The RNA sample should be free of salts (e.g., Mg²⁺, or guanidinium salts) or organics (e.g., phenol and ethanol). RNA must be free of DNA. gDNA is a common contaminant from RNA preps. It may be carried over from the interphase of organic extractions or when the silica matrix of solid phase RNA purification methods is overloaded. If the total RNA sample may contain gDNA contamination, treat the sample with DNase I to remove all traces of DNA (not provided in this kit). After treatment with DNase I the enzyme should be removed from the sample. Any residual activity of DNase I will degrade the single stranded DNA probes necessary for the ribosomal depletion. DNase I can be removed from the extraction using phenol/ chloroform extraction and ethanol precipitation or silica column methods such as the Monarch RNA Cleanup Kit (NEB #T2030). Contaminating DNA can cause inaccurate RNA quantification and impede proper globin mRNA and rRNA removal.

Input Amount Requirements

This protocol requires 10 ng–1 µg total RNA (DNA free) in a maximum of 10 µl of nuclease-free water, quantified by an RNA-specific dye-assisted fluorometric method (e.g., Qubit®, RiboGreen®), and quality checked by Bioanalyzer.

2.1. Probe Hybridization to RNA

2.1.1. Dilute 10 ng–1 µg of total RNA with nuclease-free water to a final volume of 10 µl in a PCR tube. Keep the RNA on ice.

2.1.2. Assemble the following RNA/Probe hybridization reaction on ice:

| RNA/PROBE HYBRIDIZATION REACTION | VOLUME |
|---------------------------------------------------------|--------|
| ○ (white) Total RNA in nuclease-free water (10 ng–1 µg) | 10 µl |
| ○ (white) NEBNext Globin and rRNA Depletion Solution | 3 µl |
| ○ (white) Probe Hybridization Buffer | 2 µl |
| Total Volume | 15 µl |

2.1.3. Mix thoroughly by gently pipetting up and down at least 10 times. **Note: Its crucial to mix well at this step.**

2.1.4. Briefly spin down the tube in a microcentrifuge to collect the liquid from the side of the tube.

- 2.1.5. Place the tube in a pre-heated thermocycler and run the following program with the heated lid set at 105°C. This program will take approximately 15–20 minutes to complete

| TEMPERATURE | TIME |
|-------------------|-----------|
| 95°C | 2 minutes |
| Ramp down to 22°C | 0.1°C/sec |
| Hold at 22°C | 5 minutes |

- 2.1.6. Briefly spin down the sample in a microcentrifuge, and place on ice. Proceed immediately to RNase H Digestion.

2.2. RNase H Digestion

- 2.2.1. Assemble the following RNase H Digestion reaction **on ice**:

| RNASE H DIGESTION REACTION | VOLUME |
|----------------------------------------|--------|
| Hybridized RNA (Step 2.1.6) | 15 µl |
| ○ (white) NEBNext Thermostable RNase H | 2 µl |
| ○ (white) RNase H Reaction Buffer | 2 µl |
| Nuclease-free Water | 1 µl |
| Total Volume | 20 µl |

- 2.2.2. Mix thoroughly by gently pipetting up and down at least 10 times.
- 2.2.3. Briefly spin down the tube in a microcentrifuge.
- 2.2.4. Incubate the tube in a pre-heated thermocycler for **30 minutes at 50°C** with the lid set at 55°C.
- 2.2.5. Briefly spin down the tube in a microcentrifuge, and place on ice. Proceed immediately to the DNase I Digestion.

2.3. DNase I Digestion

- 2.3.1. Assemble the following DNase I Digestion reaction **on ice**:

| DNASE I DIGESTION REACTION | VOLUME |
|-----------------------------------|---------|
| RNase H treated RNA (Step 2.2.5) | 20 µl |
| ○ (white) DNase I Reaction Buffer | 5 µl |
| ○ (white) NEBNext DNase I | 2.5 µl |
| Nuclease-free Water | 22.5 µl |
| Total Volume | 50 µl |

- 2.3.2. Mix thoroughly by pipetting up and down at least 10 times.
- 2.3.3. Briefly spin down the sample in a microcentrifuge.
- 2.3.4. Incubate the tube in a pre-heated thermocycler for **30 minutes at 37°C** with the lid set at 40°C or off.
- 2.3.5. Briefly spin down the tube in a microcentrifuge, and place on ice. Proceed immediately to the RNA Purification step.

2.4 RNA Purification Using Agencourt RNAClean XP Beads or NEBNext RNA Sample Purification Beads

- 2.4.1. Vortex the Agencourt RNAClean XP Beads or NEBNext RNA Sample Purification Beads to resuspend.
- 2.4.2. Add 90 µl (1.8X) beads to the RNA Sample from Step 2.3.5. and mix thoroughly by pipetting up and down at least 10 times.
- 2.4.3. Incubate the tube for **15 minutes on ice** to bind the RNA to the beads.
- 2.4.4. Place the tube on a magnetic rack to separate the beads from the supernatant.
- 2.4.5. After the solution is clear, carefully remove and discard the supernatant. Be careful not to disturb the beads which contain the RNA.
- 2.4.6. Add 200 µl of freshly prepared 80% ethanol to the tube while in the magnetic rack. Incubate at room temperature for 30 seconds, and then carefully remove and discard the supernatant. Be careful not to disturb the beads which contain the RNA.
- 2.4.7. Repeat Step 2.4.6 once for a total of two washes.
- 2.4.8. Completely remove residual ethanol, and air dry the beads for up to 5 minutes while the tube is on the magnetic rack with the lid open.

Caution: Do not over-dry the beads. This may result in lower recovery of RNA target. Elute the samples when the beads are still dark brown and glossy looking, but when all visible liquid has evaporated. When the beads turn lighter brown and start to crack they are too dry.

- 2.4.9. Remove the tube from the magnetic rack. Elute the RNA from the beads by adding **7 µl of nuclease-free water**. Mix thoroughly by pipetting up and down at least 10 times and briefly spin the tube.
- 2.4.10. Incubate the tube for 2 minutes at room temperature.
- 2.4.11. Place the tube on the magnetic rack until the solution is clear (~ 2 minutes).
- 2.4.12. Remove 5 µl of the supernatant containing RNA and transfer to a nuclease-free tube.
- 2.4.13. Place the sample on ice and proceed to RNA Fragmentation and Priming.



Note: If you need to stop at this point in the protocol samples can be stored at –80°C.

2.5. RNA Fragmentation and Priming



RNA fragmentation is only required for intact or partially degraded RNA. Recommended fragmentation times can be found in Table 2.5.1.

- 2.5.1. Assemble the following fragmentation and priming reaction **on ice**:

| FRAGMENTATION AND PRIMING REACTION | VOLUME |
|----------------------------------------------------------|--------|
| Ribosomal RNA Depleted Sample (Step 2.4.13) | 5 µl |
| • (lilac) NEBNext First Strand Synthesis Reaction Buffer | 4 µl |
| • (lilac) Random Primers | 1 µl |
| Total Volume | 10 µl |

- 2.5.2. Mix thoroughly by pipetting up and down 10 times.
- 2.5.3. Place the sample on a thermocycler and incubate the sample at 94°C following the recommendations in Table 2.5.1 below for libraries with inserts ~200 nt.

Table 2.5.3. Suggested fragmentation times based on RIN value of RNA input.

| RNA TYPE | RIN | FRAG. TIME |
|------------------------|-----|------------------|
| Intact RNA | > 7 | 15 min. at 94°C |
| Partially Degraded RNA | 2–6 | 7–8 min. at 94°C |

Note: Refer to Appendix (Section 4) for fragmentation conditions if you are preparing libraries with large inserts (> 200 bp). Conditions in Appendix (4.1) only apply for intact RNA.

- 2.5.4. Immediately transfer the tube to ice and proceed to First Strand cDNA Synthesis.

2.6. First Strand cDNA Synthesis

- 2.6.1. Assemble the first strand synthesis reaction **on ice** by adding the following components to the fragmented and primed RNA from Step 2.5.4:

| FIRST STRAND SYNTHESIS REACTION | VOLUME |
|-----------------------------------------------------|--------|
| Fragmented and primed RNA (Step 2.5.4) | 10 µl |
| • (brown) NEBNext Strand Specificity Reagent | 8 µl |
| • (lilac) NEBNext First Strand Synthesis Enzyme Mix | 2 µl |
| Total Volume | 20 µl |

- 2.6.2. Mix thoroughly by pipetting up and down 10 times.



2.6.3. Incubate the sample in a preheated thermocycler with the heated lid set at $\geq 80^{\circ}\text{C}$ as follows:

Note: If you are following recommendations in Appendix (Section 4) for libraries with longer inserts (> 200 bases), increase the incubation at 42°C from 15 minutes to 50 minutes at Step 2 below.

- Step 1: 10 minutes at 25°C
- Step 2: 15 minutes at 42°C
- Step 3: 15 minutes at 70°C
- Step 4: Hold at 4°C

2.6.4. Proceed directly to Second Strand cDNA Synthesis.

2.7. Second Strand cDNA Synthesis

2.7.1. Assemble the second strand cDNA synthesis reaction **on ice** by adding the following components into the first strand synthesis product from Step 2.6.3.

| SECOND STRAND SYNTHESIS REACTION | VOLUME |
|--------------------------------------------------------------------------------|------------------|
| First-Strand Synthesis Product (Step 2.6.3) | 20 μl |
| • (orange) NEBNext Second Strand Synthesis Reaction Buffer with dUTP Mix (10X) | 8 μl |
| • (orange) NEBNext Second Strand Synthesis Enzyme Mix | 4 μl |
| Nuclease-free Water | 48 μl |
| Total Volume | 80 μl |

2.7.2. Keeping the tube on ice, mix thoroughly by pipetting up and down at least 10 times.

2.7.3. Incubate in a thermocycler for **1 hour at 16°C** with the heated lid set at $\leq 40^{\circ}\text{C}$ (or off).

2.8. Purification of Double-stranded cDNA Using SPRIselect Beads or NEBNext Sample Purification Beads

2.8.1. Vortex SPRIselect Beads or NEBNext Sample Purification Beads to resuspend.

2.8.2. Add **144 μl (1.8X)** of resuspended beads to the second strand synthesis reaction ($\sim 80 \mu\text{l}$). Mix well on a vortex mixer or by pipetting up and down at least 10 times.

2.8.3. Incubate for **5 minutes** at room temperature.

2.8.4. Briefly spin the tube in a microcentrifuge to collect any sample on the sides of the tube. Place the tube on a magnet to separate beads from the supernatant. After the solution is clear, carefully remove and discard the supernatant. Be careful not to disturb the beads, which contain DNA. (**Caution: do not discard beads**).

2.8.5. Add 200 μl of freshly prepared 80% ethanol to the tube while in the magnetic rack. Incubate at room temperature for 30 seconds, and then carefully remove and discard the supernatant.

2.8.6. Repeat Step 2.8.5 once for a total of 2 washing steps.

2.8.7. Air dry the beads for up to 5 minutes while the tube is on the magnetic rack with lid open.

Caution: Do not over-dry the beads. This may result in lower recovery of DNA target. Elute the samples when the beads are still dark brown and glossy looking, but when all visible liquid has evaporated. When the beads turn lighter brown and start to crack they are too dry.

2.8.8. Remove the tube from the magnetic rack. Elute the DNA from the beads by adding **53 μl 0.1X TE Buffer** (provided) to the beads. Mix well on a vortex mixer or by pipetting up and down at least 10 times. Quickly spin the tube and incubate for 2 minutes at room temperature. Place the tube on the magnetic rack until the solution is clear.

2.8.9. Remove 50 μl of the supernatant and transfer to a clean nuclease-free PCR tube.



Note: If you need to stop at this point in the protocol samples can be stored at -20°C .

2.9. End Prep of cDNA Library

- 2.9.1. Assemble the end prep reaction **on ice** by adding the following components to the second strand synthesis product from Step 2.8.9.

| END PREP REACTION | VOLUME |
|-----------------------------------------------------|--------|
| Second Strand cDNA Synthesis Product (Step 2.8.9) | 50 µl |
| ● (green) NEBNext Ultra II End Prep Reaction Buffer | 7 µl |
| ● (green) NEBNext Ultra II End Prep Enzyme Mix | 3 µl |
| Total Volume | 60 µl |

If a master mix is made, add 10 µl of master mix to 50 µl of cDNA for the End Prep reaction.

- 2.9.2. Set a 100 µl or 200 µl pipette to 50 µl and then pipette the entire volume up and down at least 10 times to mix thoroughly. Perform a quick spin to collect all liquid from the sides of the tube.

Note: It is important to mix well. The presence of a small amount of bubbles will not interfere with performance.

- 2.9.3. Incubate the sample in a thermocycler with the heated lid set at $\geq 75^{\circ}\text{C}$ as follows.

30 minutes at 20°C

30 minutes at 65°C

Hold at 4°C.

- 2.9.4. Proceed immediately to Adaptor Ligation.

2.10. Adaptor Ligation



- 2.10.1. Dilute the ● (red) NEBNext Adaptor* prior to setting up the ligation reaction in ice-cold Adaptor Dilution Buffer and keep the adaptor on ice.

| TOTAL RNA INPUT | DILUTION REQUIRED |
|-----------------|---------------------------------------------|
| 1,000 ng–101 ng | 5-fold dilution in Adaptor Dilution Buffer |
| 100 ng–10 ng | 25-fold dilution in Adaptor Dilution Buffer |

*The NEBNext adaptor is provided in NEBNext oligos kit. NEB has several oligo kit options, which are supplied separately from the library prep kit.

- 2.10.2. Assemble the ligation reaction **on ice** by adding the following components, in the order given, to the end prep reaction product from Step 2.9.3.

| LIGATION REACTION | VOLUME |
|----------------------------------------------|---------|
| End Prepped DNA (Step 2.9.3) | 60 µl |
| Diluted Adaptor (Step 2.10.1) | 2.5 µl |
| ● (red) NEBNext Ligation Enhancer | 1 µl |
| ● (red) NEBNext Ultra II Ligation Master Mix | 30 µl |
| Total Volume | 93.5 µl |

Note: The Ligation Master Mix and Ligation Enhancer can be mixed ahead of time and is stable for at least 8 hours @ 4°C. Do not premix the Ligation Master Mix, Ligation Enhancer and adaptor prior to use in the Adaptor Ligation Step.

- 2.10.3. Set a 100 µl or 200 µl pipette to 80 µl and then pipette the entire volume up and down at least 10 times to mix thoroughly. Perform a quick spin to collect all liquid from the sides of the tube.

Caution: The NEBNext Ultra II Ligation Master Mix is very viscous. Care should be taken to ensure adequate mixing of the ligation reaction, as incomplete mixing will result in reduced ligation efficiency. The presence of a small amount of bubbles will not interfere with performance.

- 2.10.4. Incubate **15 minutes at 20°C** in a thermocycler.

- 2.10.5. Add 3 µl ● (blue or red) USER[®] Enzyme to the ligation mixture from Step 2.10.4, resulting in total volume of 96.5 µl.

2.10.6. Mix well and incubate at **37°C for 15 minutes** with the heated lid set to $\geq 45^{\circ}\text{C}$.

2.10.7. Proceed immediately to Purification of the Ligation Reaction.

2.11. Purification of the Ligation Reaction Using SPRIselect Beads or NEBNext Sample Purification Beads



Note: If you are selecting for libraries with larger insert size (> 200 nt) follow the size selection recommendations in the Appendix, Section 4.

2.11.1. Add 87 μl (0.9X) resuspended SPRIselect Beads or NEBNext Sample Purification Beads and mix well on a vortex mixer or by pipetting up and down at least 10 times.

2.11.2. Incubate for 10 minutes at room temperature.

2.11.3. Quickly spin the tube in a microcentrifuge and place the tube on an appropriate magnetic rack to separate beads from the supernatant. After the solution is clear (~ 5 minutes), discard the supernatant that contains unwanted fragments. (**Caution: do not discard beads**).

2.11.4. Add 200 μl of freshly prepared 80% ethanol to the tube while in the magnetic rack. Incubate at room temperature for 30 seconds, and then carefully remove and discard the supernatant.

2.11.5. Repeat Step 2.11.4 once for a total of 2 washing steps.

2.11.6. Briefly spin the tube, and put the tube back in the magnetic rack.

2.11.7. Completely remove the residual ethanol, and air dry beads for up to 5 minutes while the tube is on the magnetic rack with the lid open.

Caution: Do not over-dry the beads. This may result in lower recovery of DNA target. Elute the samples when the beads are still dark brown and glossy looking, but when all visible liquid has evaporated. When the beads turn lighter brown and start to crack they are too dry.

2.11.8. Remove the tube from the magnetic rack. Elute DNA target from the beads by adding **17 μl 0.1X TE** (provided) to the beads. Mix well on a vortex mixer or by pipetting up and down. Quickly spin the tube and incubate for 2 minutes at room temperature. Put the tube in the magnet until the solution is clear.

2.11.9. Without disturbing the bead pellet, transfer 15 μl of the supernatant to a clean PCR tube and proceed to PCR enrichment.



Note: If you need to stop at this point in the protocol samples can be stored at -20°C .

2.12. PCR Enrichment of Adaptor Ligated DNA

Check and verify that the concentration of your oligos is 10 µM on the label.



Use Option A for any NEBNext Oligos kit where index primers are supplied in tubes. These kits have the forward and reverse primers supplied in separate tubes.

Use Option B for any NEBNext Oligos kit where index primers are supplied in a 96-well plate format. These kits have the forward and reverse (i7 and i5) primers combined.

2.12.1. Set up the PCR reaction as described below based on the type of oligos (PCR primers) used.

2.12.1A. Forward and Reverse Primers Separate

| COMPONENT | VOLUME PER ONE LIBRARY |
|------------------------------------------|------------------------|
| Adaptor Ligated DNA (Step 2.11.9) | 15 µl |
| • (blue) NEBNext Ultra II Q5® Master Mix | 25 µl |
| Universal PCR Primer/i5 Primer*,** | 5 µl |
| Index (X) Primer/i7 Primer*, ** | 5 µl |
| Total Volume | 50 µl |

* NEBNext Oligos must be purchased separately from the library prep kit. Refer to the corresponding NEBNext Oligo kit manual for determining valid barcode combinations.

** Use only one i7 primer/ index primer per sample. Use only one i5 primer (or the universal primer for single index kits) per sample

2.12.1B. Forward and Reverse Primers Combined

| COMPONENT | VOLUME PER ONE LIBRARY |
|-----------------------------------------|------------------------|
| Adaptor Ligated DNA (Step 2.11.9) | 15 µl |
| • (blue) NEBNext Ultra II Q5 Master Mix | 25 µl |
| Index Primer Mix* | 10 µl |
| Total Volume | 50 µl |

* NEBNext Oligos must be purchased separately from the library prep kit. Refer to the corresponding NEBNext Oligo kit manual for determining valid barcode combinations.

2.12.2. Mix well by gently pipetting up and down 10 times. Quickly spin the tube in a microcentrifuge.

2.12.3. Place the tube on a thermocycler with the heated lid set to 105°C and perform PCR amplification using the following PCR cycling conditions (refer to Table 2.12.3A and Table 2.12.3B):

Table 2.12.3A:

| CYCLE STEP | TEMP | TIME | CYCLES |
|----------------------|------|------------|-----------|
| Initial Denaturation | 98°C | 30 seconds | 1 |
| Denaturation | 98°C | 10 seconds | 8–16*, ** |
| Annealing/Extension | 65°C | 75 seconds | |
| Final Extension | 65°C | 5 minutes | 1 |
| Hold | 4°C | ∞ | |

* The number of PCR cycles should be adjusted based on RNA input.

** It is important to limit the number of PCR cycles to avoid overamplification.

If overamplification occurs, a second peak ~ 1,000 bp will appear on the Bioanalyzer trace (See Figure 5.2 on page 27).

Table 2.12.3B: Recommended PCR cycles based on total RNA input amount:

| TOTAL RNA INPUT | RECOMMENDED PCR CYCLES* |
|-----------------|-------------------------|
| 1,000 ng | 8–9 |
| 100 ng | 12–13 |
| 10 ng | 15–16 |

* The PCR cycles are recommended based on high quality human whole blood total RNA. To prevent over-amplification, the number of cycles may require optimization based on the sample quality and the fraction of globin mRNA. For RNA where globin mRNA is > than 50% of the transcripts (once rRNA is removed), follow the higher cycle recommendation for that input.

2.13. Purification of the PCR Reaction using SPRIselect Beads or NEBNext Sample Purification Beads

- 2.13.1. Vortex SPRIselect Beads or NEBNext Sample Purification Beads to resuspend.
- 2.13.2. Add **45 µl (0.9X)** of resuspended beads to the PCR reaction (~ 50 µl). Mix well on a vortex mixer or by pipetting up and down at least 10 times.
- 2.13.3. Incubate for **5 minutes** at room temperature.
- 2.13.4. Quickly spin the tube in a microcentrifuge and place the tube on an appropriate magnetic rack to separate beads from the supernatant. After the solution is clear (about 5 minutes), carefully remove and discard the supernatant. Be careful not to disturb the beads that contain DNA targets. (**Caution: do not discard beads**).
- 2.13.5. Add 200 µl of freshly prepared 80% ethanol to the tube while in the magnetic rack. Incubate at room temperature for 30 seconds, and then carefully remove and discard the supernatant.
- 2.13.6. Repeat Step 2.13.5 once for a total of 2 washing steps.
- 2.13.7. Air dry the beads for up to 5 minutes while the tube is on the magnetic rack with the lid open.

Caution: Do not over-dry the beads. This may result in lower recovery of DNA target. Elute the samples when the beads are still dark brown and glossy looking, but when all visible liquid has evaporated. When the beads turn lighter brown and start to crack they are too dry.

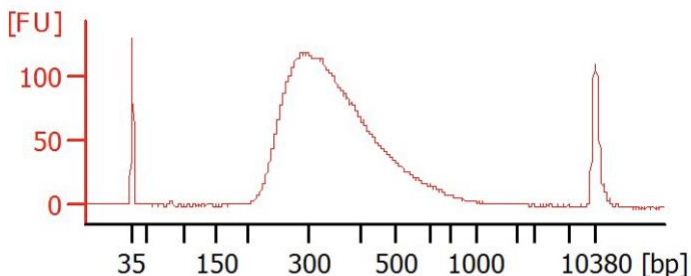
- 2.13.8. Remove the tube from the magnetic rack. Elute the DNA target from the beads by adding **23 µl 0.1X TE** (provided) to the beads. Mix well on a vortex mixer or by pipetting up and down ten times. Quickly spin the tube in a microcentrifuge and incubate for 2 minutes at room temperature. Place the tube in the magnetic rack until the solution is clear.
- 2.13.9. Transfer 20 µl of the supernatant to a clean PCR tube, and store at –20°C.

2.14. Library Quantification

- 2.14.1. Use a Bioanalyzer or TapeStation to determine the size distribution and concentration of the libraries.
- 2.14.2. Check that the electropherogram shows a narrow distribution with a peak size approximately 300 bp.

Note: If a peak at ~ 80 bp (primers) or 128 bp (adaptor-dimer) is visible in the Bioanalyzer traces, bring up the sample volume (from Step 2.13.9) to 50 µl with 0.1X TE buffer and repeat the SPRIselect Bead or NEBNext Sample Purification Bead Cleanup Step (Section 2.13).

Figure 2.14.1 Example of RNA library size distribution on a Bioanalyzer.



Please read the FAQ section on NEB.com for additional information about this product.

Section 3

Protocol for use with NEBNext Ultra II RNA Library Prep Kit for Illumina (NEB #E7770)

Symbols



This caution sign signifies a step in the protocol that has two paths leading to the same end point but is dependent on a user variable, like the type of RNA input.



This is a point where you can safely stop the protocol and store the samples prior to proceeding to the next step in the protocol.

Colored bullets indicate the cap color of the reagent to be added.

This protocol has been optimized for approximately 200 nt RNA inserts. To generate libraries with longer RNA insert sizes, refer to the Appendix (Section 4) for recommended fragmentation times and size selection conditions.

Keep all of the buffers on ice, unless otherwise indicated.

RNA Sample Requirements

RNA Integrity:

Assess the size and quality of the input RNA by running the RNA sample on an Agilent Bioanalyzer RNA 6000 Nano/Pico Chip to determine the RNA Integrity Number (RIN). In the RNA-Seq library preparation application, RNA with different RIN values require different fragmentation times or no fragmentation at all.

RNA Sample Requirements:

The RNA sample should be free of salts (e.g., Mg^{2+} , or guanidinium salts) or organics (e.g., phenol and ethanol). RNA must be free of DNA. gDNA is a common contaminant from RNA preps. It may be carried over from the interphase of organic extractions or when the silica matrix of solid phase RNA purification methods is overloaded. If the total RNA sample may contain gDNA contamination, treat the sample with DNase I to remove all traces of DNA (not provided in this kit). After treatment with DNase I the enzyme should be removed from the sample. Any residual activity of DNase I will degrade the single stranded DNA probes necessary for the ribosomal depletion. DNase I can be removed from the extraction using phenol/ chloroform extraction and ethanol precipitation or silica column methods such as the Monarch RNA Cleanup Kit (NEB #T2030). Contaminating DNA can cause inaccurate RNA quantification and impede proper globin mRNA and rRNA removal.

Input Amount Requirements

This protocol requires 10 ng–1 µg total RNA (DNA free) in a maximum of 10 µl of nuclease-free water, quantified by an RNA-specific dye-assisted fluorometric method (e.g., Qubit[®], RiboGreen[®]), and quality checked by Bioanalyzer.

3.1. Probe Hybridization to RNA

- 3.1.1. Dilute 10 ng–1 µg of total RNA with nuclease-free water to a final volume of 10 µl in a PCR tube. Keep the RNA on ice.
- 3.1.2. Assemble the following RNA/Probe hybridization reaction on ice:

| RNA/PROBE HYBRIDIZATION REACTION | VOLUME |
|---------------------------------------------------------|--------|
| ○ (white) Total RNA in nuclease-free water (10 ng–1 µg) | 10 µl |
| ○ (white) NEBNext Globin and rRNA Depletion Solution | 3 µl |
| ○ (white) Probe Hybridization Buffer | 2 µl |
| Total Volume | 15 µl |

- 3.1.3. Mix thoroughly by gently pipetting up and down at least 10 times. **Note: Its crucial to mix well at this step.**
- 3.1.4. Briefly spin down the tube in a microcentrifuge to collect the liquid from the side of the tube.

- 3.1.5. Place the tube in a pre-heated thermocycler and run the following program with the heated lid set at 105°C. This program will take approximately 15–20 minutes to complete

| TEMPERATURE | TIME |
|-------------------|-----------|
| 95°C | 2 minutes |
| Ramp down to 22°C | 0.1°C/sec |
| Hold at 22°C | 5 minutes |

- 3.1.6. Briefly spin down the sample in a microcentrifuge, and place on ice. Proceed immediately to RNase H Digestion.

3.2. RNase H Digestion

- 3.2.1. Assemble the following RNase H Digestion reaction on ice:

| RNASE H DIGESTION REACTION | VOLUME |
|----------------------------------------|--------|
| Hybridized RNA (Step 3.1.6) | 15 µl |
| ○ (white) NEBNext Thermostable RNase H | 2 µl |
| ○ (white) RNase H Reaction Buffer | 2 µl |
| Nuclease-free Water | 1 µl |
| Total Volume | 20 µl |

- 3.2.2. Mix thoroughly by gently pipetting up and down at least 10 times.
- 3.2.3. Briefly spin down the tube in a microcentrifuge.
- 3.2.4. Incubate the tube in a pre-heated thermocycler for **30 minutes at 50°C** with the lid set at 55°C.
- 3.2.5. Briefly spin down the tube in a microcentrifuge and place on ice. Proceed immediately to the DNase I Digestion.

3.3. DNase I Digestion

- 3.3.1. Assemble the following DNase I Digestion reaction **on ice**:

| DNASE I DIGESTION REACTION | VOLUME |
|-----------------------------------|---------|
| RNase H treated RNA (Step 3.2.5) | 20 µl |
| ○ (white) DNase I Reaction Buffer | 5 µl |
| ○ (white) NEBNext DNase I | 2.5 µl |
| Nuclease-free Water | 22.5 µl |
| Total Volume | 50 µl |

- 3.3.2. Mix thoroughly by pipetting up and down at least 10 times.
- 3.3.3. Briefly spin down the sample in a microcentrifuge.
- 3.3.4. Incubate the tube in a pre-heated thermocycler for **30 minutes at 37°C** with the lid set at 40°C or off.
- 3.3.5. Briefly spin down the tube in a microcentrifuge, and place on ice. Proceed immediately to the RNA Purification step.

3.4 RNA Purification Using Agencourt RNAClean XP Beads or NEBNext RNA Sample Purification Beads

- 3.4.1. Vortex the Agencourt RNAClean XP Beads or NEBNext RNA Sample Purification Beads to resuspend.
- 3.4.2. Add **90 µl (1.8X)** beads to the RNA Sample from Step 3.3.5. and mix thoroughly by pipetting up and down at least 10 times.
- 3.4.3. Incubate the tube for **15 minutes on ice** to bind the RNA to the beads.
- 3.4.4. Place the tube on a magnetic rack to separate the beads from the supernatant.
- 3.4.5. After the solution is clear, carefully remove and discard the supernatant. Be careful not to disturb the beads which contain the RNA.
- 3.4.6. Add 200 µl of freshly prepared 80% ethanol to the tube while in the magnetic rack. Incubate at room temperature for 30 seconds, and then carefully remove and discard the supernatant. Be careful not to disturb the beads which contain the RNA.
- 3.4.7. Repeat Step 3.4.6 once for a total of two washes.
- 3.4.8. Completely remove residual ethanol, and air dry the beads for up to 5 minutes while the tube is on the magnetic rack with the lid open.

Caution: Do not over-dry the beads. This may result in lower recovery of RNA target. Elute the samples when the beads are still dark brown and glossy looking, but when all visible liquid has evaporated. When the beads turn lighter brown and start to crack they are too dry.

- 3.4.9. Remove the tube from the magnetic rack. Elute the RNA from the beads by adding **7 µl of nuclease-free water**. Mix thoroughly by pipetting up and down at least 10 times and briefly spin the tube.
- 3.4.10. Incubate the tube for 2 minutes at room temperature.
- 3.4.11. Place the tube on the magnetic rack until the solution is clear (~ 2 minutes).
- 3.4.12. Remove 5 µl of the supernatant containing RNA and transfer to a nuclease-free tube.
- 3.4.13. Place the sample on ice and proceed to RNA Fragmentation and Priming.



Note: If you need to stop at this point in the protocol samples can be stored at –80°C.

3.5. RNA Fragmentation and Priming



RNA fragmentation is only required for intact or partially degraded RNA. Recommended fragmentation times can be found in Table 3.5.3.

- 3.5.1. Assemble the following fragmentation and priming reaction **on ice**:

| FRAGMENTATION AND PRIMING REACTION | VOLUME |
|----------------------------------------------------------|--------|
| Ribosomal RNA Depleted Sample (Step 3.4.13.) | 5 µl |
| • (lilac) NEBNext First Strand Synthesis Reaction Buffer | 4 µl |
| • (lilac) Random Primers | 1 µl |
| Total Volume | 10 µl |

- 3.5.2. Mix thoroughly by pipetting up and down 10 times.
- 3.5.3. Place the sample on a thermocycler and incubate the sample at 94°C following the recommendations in Table 3.5.3 below for libraries with inserts ~200 nt.

Table 3.5.3. Suggested fragmentation times based on RIN value of RNA input.

| RNA TYPE | RIN | FRAG. TIME |
|------------------------|-----|------------------|
| Intact RNA | > 7 | 15 min. at 94°C |
| Partially Degraded RNA | 2–6 | 7–8 min. at 94°C |

Note: Refer to Appendix (Section 4) for fragmentation conditions if you are preparing libraries with large inserts (> 200 bp). Conditions in Appendix (4.1) only apply for intact RNA.

- 3.5.4. Immediately transfer the tube to ice and proceed to First Strand cDNA Synthesis.

3.6. First Strand cDNA Synthesis

- 3.6.1. Assemble the first strand synthesis reaction **on ice** by adding the following components to the fragmented and primed RNA from Step 3.5.4:

| FIRST STRAND SYNTHESIS REACTION | VOLUME |
|-----------------------------------------------------|--------|
| Fragmented and primed RNA (Step 3.5.4) | 10 µl |
| Nuclease-free Water | 8 µl |
| • (lilac) NEBNext First Strand Synthesis Enzyme Mix | 2 µl |
| Total Volume | 20 µl |

- 3.6.2. Mix thoroughly by pipetting up and down at least 10 times.



3.6.3. Incubate the sample in a preheated thermocycler with the heated lid set at $\geq 80^{\circ}\text{C}$ as follows:

Note: If you are following recommendations in Section 4 for libraries with longer inserts (> 200 bases), increase the incubation at 42°C from 15 minutes to 50 minutes at Step 2 below.

- Step 1: 10 minutes at 25°C
- Step 2: 15 minutes at 42°C
- Step 3: 15 minutes at 70°C
- Step 4: Hold at 4°C

3.6.4. Proceed directly to Second Strand cDNA Synthesis.

3.7. Second Strand cDNA Synthesis

3.7.1. Assemble the second strand cDNA synthesis reaction **on ice** by adding the following components into the first strand synthesis product from Step 3.6.4.

| SECOND STRAND SYNTHESIS REACTION | VOLUME |
|------------------------------------------------------------------|------------------|
| First-Strand Synthesis Product (Step 3.6.4) | 20 μl |
| • (orange) NEBNext Second Strand Synthesis Reaction Buffer (10X) | 8 μl |
| • (orange) NEBNext Second Strand Synthesis Enzyme Mix | 4 μl |
| Nuclease-free Water | 48 μl |
| Total Volume | 80 μl |

3.7.2. Keeping the tube on ice, mix thoroughly by pipetting up and down at least 10 times.

3.7.3. Incubate in a thermocycler for **1 hour at 16°C** with the heated lid set at $\leq 40^{\circ}\text{C}$ (or off).

3.8. Purification of Double-stranded cDNA Using SPRIselect Beads or NEBNext Sample Purification Beads

3.8.1. Vortex SPRIselect Beads or NEBNext Sample Purification Beads to resuspend.

3.8.2. Add **144 μl (1.8X)** of resuspended beads to the second strand synthesis reaction ($\sim 80 \mu\text{l}$). Mix well on a vortex mixer or by pipetting up and down at least 10 times.

3.8.3. Incubate for **5 minutes** at room temperature.

3.8.4. Briefly spin the tube in a microcentrifuge to collect any sample on the sides of the tube. Place the tube on a magnet to separate beads from the supernatant. After the solution is clear, carefully remove and discard the supernatant. Be careful not to disturb the beads, which contain DNA. (**Caution: do not discard beads**).

3.8.5. Add 200 μl of freshly prepared 80% ethanol to the tube while in the magnetic rack. Incubate at room temperature for 30 seconds, and then carefully remove and discard the supernatant.

3.8.6. Repeat Step 3.8.5 once for a total of **2 washes**.

3.8.7. Air dry the beads for up to 5 minutes while the tube is on the magnetic rack with lid open.

Caution: Do not over-dry the beads. This may result in lower recovery of DNA target. Elute the samples when the beads are still dark brown and glossy looking, but when all visible liquid has evaporated. When the beads turn lighter brown and start to crack they are too dry.

3.8.8. Remove the tube from the magnetic rack. Elute the DNA from the beads by adding **53 μl 0.1X TE Buffer** (provided) to the beads. Mix well on a vortex mixer or by pipetting up and down at least 10 times. Quickly spin the tube and incubate for 2 minutes at room temperature. Place the tube on the magnetic rack until the solution is clear.

3.8.9. Remove 50 μl of the supernatant and transfer to a clean nuclease-free PCR tube.



Note: If you need to stop at this point in the protocol samples can be stored at -20°C .

3.9. End Prep of cDNA Library

- 3.9.1. Assemble the end prep reaction **on ice** by adding the following components to the second strand synthesis product from Step 3.8.9.

| END PREP REACTION | VOLUME |
|-----------------------------------------------------|--------|
| Second Strand cDNA Synthesis Product (Step 3.8.9) | 50 µl |
| ● (green) NEBNext Ultra II End Prep Reaction Buffer | 7 µl |
| ● (green) NEBNext Ultra II End Prep Enzyme Mix | 3 µl |
| Total Volume | 60 µl |

If a master mix is made, add 10 µl of master mix to 50 µl of cDNA for the End Prep reaction.

- 3.9.2. Set a 100 µl or 200 µl pipette to 50 µl and then pipette the entire volume up and down at least 10 times to mix thoroughly. Perform a quick spin to collect all liquid from the sides of the tube.

Note: It is important to mix well. The presence of a small amount of bubbles will not interfere with performance.

- 3.9.3. Incubate the sample in a thermocycler with the heated lid set at $\geq 75^{\circ}\text{C}$ as follows.

30 minutes at 20°C

30 minutes at 65°C

Hold at 4°C.

- 3.9.4. Proceed immediately to Adaptor Ligation.

3.10. Adaptor Ligation



- 3.10.1. Dilute the ● (red) NEBNext Adaptor* prior to setting up the ligation reaction in ice-cold Adaptor Dilution Buffer and keep the adaptor on ice.

| TOTAL RNA INPUT | DILUTION REQUIRED |
|-----------------|---------------------------------------------|
| 1,000 ng–101 ng | 5-fold dilution in Adaptor Dilution Buffer |
| 100 ng–10 ng | 25-fold dilution in Adaptor Dilution Buffer |

*The NEBNext adaptor is provided in NEBNext oligos kit. NEB has several oligo kit options, which are supplied separately from the library prep kit.

- 3.10.2. Assemble the ligation reaction **on ice** by adding the following components, in the order given, to the end prep reaction product from Step 3.9.4.

| LIGATION REACTION | VOLUME |
|----------------------------------------------|---------|
| End Prepped DNA (Step 3.9.4) | 60 µl |
| Diluted Adaptor (Step 3.10.1) | 2.5 µl |
| ● (red) NEBNext Ligation Enhancer | 1 µl |
| ● (red) NEBNext Ultra II Ligation Master Mix | 30 µl |
| Total Volume | 93.5 µl |

Note: The Ligation Master Mix and Ligation Enhancer can be mixed ahead of time and is stable for at least 8 hours @ 4°C. Do not premix the Ligation Master Mix, Ligation Enhancer and adaptor prior to use in the Adaptor Ligation Step.

- 3.10.3. Set a 100 µl or 200 µl pipette to 80 µl and then pipette the entire volume up and down at least 10 times to mix thoroughly. Perform a quick spin to collect all liquid from the sides of the tube.

Caution: The NEBNext Ultra II Ligation Master Mix is very viscous. Care should be taken to ensure adequate mixing of the ligation reaction, as incomplete mixing will result in reduced ligation efficiency. The presence of a small amount of bubbles will not interfere with performance.

- 3.10.4. Incubate **15 minutes at 20°C** in a thermocycler.

- 3.10.5. Add 3 µl ● (blue or red) USER Enzyme to the ligation mixture from Step 3.10.4, resulting in total volume of 96.5 µl.

Note: Steps 3.10.5 and 3.10.6 are only required for use with the NEBNext Adaptor. USER enzyme can be found in the NEBNext Singleplex or Multiplex Oligos for Illumina.

3.10.6. Mix well and incubate at 37°C for 15 minutes with the heated lid set to $\geq 45^{\circ}\text{C}$.

3.10.7. Proceed immediately to Purification of the Ligation Reaction.

3.11. Purification of the Ligation Reaction Using SPRIselect Beads or NEBNext Sample Purification Beads



Note: If you are selecting for libraries with larger insert size (> 200 nt) follow the size selection recommendations in the Appendix, Section 4.

3.11.1. Add 87 μl (0.9X) resuspended SPRIselect Beads or NEBNext Sample Purification Beads and mix well on a vortex mixer or by pipetting up and down at least 10 times.

3.11.2. Incubate for 10 minutes at room temperature.

3.11.3. Quickly spin the tube in a microcentrifuge and place the tube on an appropriate magnetic rack to separate beads from the supernatant. After the solution is clear (~ 5 minutes), discard the supernatant that contains unwanted fragments. **(Caution: do not discard beads).**

3.11.4. Add 200 μl of freshly prepared 80% ethanol to the tube while in the magnetic rack. Incubate at room temperature for 30 seconds, and then carefully remove and discard the supernatant.

3.11.5. Repeat Step 3.11.4 once for a total of 2 washes.

3.11.6. Briefly spin the tube, and put the tube back in the magnetic rack.

3.11.7. Completely remove the residual ethanol, and air dry beads until the beads are dry for up to 5 minutes while the tube is on the magnetic rack with the lid open.

Caution: Do not over-dry the beads. This may result in lower recovery of DNA target. Elute the samples when the beads are still dark brown and glossy looking, but when all visible liquid has evaporated. When the beads turn lighter brown and start to crack they are too dry.

3.11.8. Remove the tube from the magnetic rack. Elute DNA target from the beads by adding 17 μl 0.1X TE (provided) to the beads. Mix well on a vortex mixer or by pipetting up and down. Quickly spin the tube and incubate for 2 minutes at room temperature. Put the tube in the magnet until the solution is clear.

3.11.9. Without disturbing the bead pellet, transfer 15 μl of the supernatant to a clean PCR tube and proceed to PCR enrichment.



Note: If you need to stop at this point in the protocol samples can be stored at -20°C .

3.12. PCR Enrichment of Adaptor Ligated DNA

Check and verify that the concentration of your oligos is 10 µM on the label.



Use Option A for any NEBNext Oligos kit where index primers are supplied in tubes. These kits have the forward and reverse primers supplied in separate tubes.

Use Option B for any NEBNext Oligos kit where index primers are supplied in a 96-well plate format. These kits have the forward and reverse (i7 and i5) primers combined.

3.12.1. Set up the PCR reaction as described below based on the type of oligos (PCR primers) used.

3.12.1A. Forward and Reverse Primers Separate

| COMPONENT | VOLUME PER ONE LIBRARY |
|-----------------------------------------|------------------------|
| Adaptor Ligated DNA (Step 3.11.9) | 15 µl |
| • (blue) NEBNext Ultra II Q5 Master Mix | 25 µl |
| Universal PCR Primer/i5 Primer*,** | 5 µl |
| Index (X) Primer/i7 Primer*,** | 5 µl |
| Total Volume | 50 µl |

* NEBNext Oligos must be purchased separately from the library prep kit. Refer to the corresponding NEBNext Oligo kit manual for determining valid barcode combinations.

** Use only one i7 primer/ index primer per sample. Use only one i5 primer (or the universal primer for single index kits) per sample

3.12.1B. Forward and Reverse Primers Combined

| COMPONENT | VOLUME PER ONE LIBRARY |
|-----------------------------------------|------------------------|
| Adaptor Ligated DNA (Step 3.11.9) | 15 µl |
| • (blue) NEBNext Ultra II Q5 Master Mix | 25 µl |
| Index Primer Mix* | 10 µl |
| Total Volume | 50 µl |

* NEBNext Oligos must be purchased separately from the library prep kit. Refer to the corresponding NEBNext Oligo kit manual for determining valid barcode combinations.

3.12.2. Mix well by gently pipetting up and down 10 times. Quickly spin the tube in a microcentrifuge.

3.12.3. Place the tube on a thermocycler with the heated lid set to 105°C and perform PCR amplification using the following PCR cycling conditions (refer to Table 3.12.3A and Table 3.12.3B):

Table 3.12.3A:

| CYCLE STEP | TEMP | TIME | CYCLES |
|----------------------|------|------------|----------|
| Initial Denaturation | 98°C | 30 seconds | 1 |
| Denaturation | 98°C | 10 seconds | 7–15*,** |
| Annealing/Extension | 65°C | 75 seconds | |
| Final Extension | 65°C | 5 minutes | 1 |
| Hold | 4°C | ∞ | |

* The number of PCR cycles should be adjusted based on RNA input.

** It is important to limit the number of PCR cycles to avoid overamplification.

If overamplification occurs, a second peak ~ 1,000 bp will appear on the Bioanalyzer trace (See Figure 5.2 on page 27).

Table 3.12.3B: Recommended PCR cycles based on total RNA input amount:

| TOTAL RNA INPUT | RECOMMENDED PCR CYCLES* |
|-----------------|-------------------------|
| 1,000 ng | 7–8 |
| 100 ng | 11–12 |
| 10 ng | 14–15 |

* The PCR cycles are recommended based on high quality human whole blood total RNA. To prevent over-amplification, the number of cycles may require optimization based on the sample quality and the fraction of globin mRNA. For RNA where globin mRNA is > than 50% of the transcripts (once rRNA is removed), follow the higher cycle recommendation for that input.

3.13. Purification of the PCR Reaction using SPRIselect Beads or NEBNext Sample Purification Beads

- 3.13.1. Vortex SPRIselect Beads or NEBNext Sample Purification Beads to resuspend.
- 3.13.2. Add **45 µl (0.9X)** of resuspended beads to the PCR reaction (~ 50 µl). Mix well on a vortex mixer or by pipetting up and down at least 10 times.
- 3.13.3. Incubate for **5 minutes** at room temperature.
- 3.13.4. Quickly spin the tube in a microcentrifuge and place the tube on an appropriate magnetic rack to separate beads from the supernatant. After the solution is clear (about 5 minutes), carefully remove and discard the supernatant. Be careful not to disturb the beads that contain DNA targets. (**Caution: do not discard beads**).
- 3.13.5. Add 200 µl of freshly prepared 80% ethanol to the tube while in the magnetic rack. Incubate at room temperature for 30 seconds, and then carefully remove and discard the supernatant.
- 3.13.6. Repeat Step 3.13.5 once for a total of 2 washes.
- 3.13.7. Air dry the beads for up to 5 minutes while the tube is on the magnetic rack with the lid open.

Caution: Do not over-dry the beads. This may result in lower recovery of DNA target. Elute the samples when the beads are still dark brown and glossy looking, but when all visible liquid has evaporated. When the beads turn lighter brown and start to crack they are too dry.

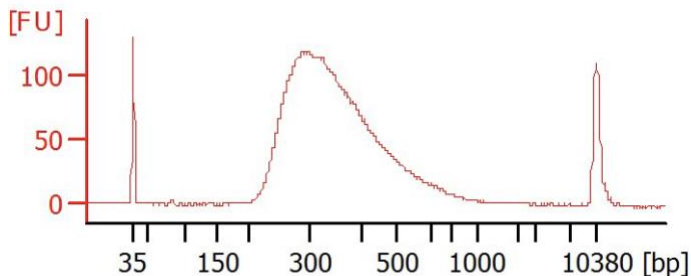
- 3.13.8. Remove the tube from the magnetic rack. Elute the DNA target from the beads by adding **23 µl 0.1X TE** (provided) to the beads. Mix well on a vortex mixer or by pipetting up and down ten times. Quickly spin the tube in a microcentrifuge and incubate for 2 minutes at room temperature. Place the tube in the magnetic rack until the solution is clear.
- 3.13.9. Transfer 20 µl of the supernatant to a clean PCR tube, and store at –20°C.

3.14. Library Quantification

- 3.14.1. Use a Bioanalyzer or TapeStation to determine the size distribution and concentration of the libraries.
- 3.14.2. Check that the electropherogram shows a narrow distribution with a peak size approximately 300 bp.

Note: If a peak at ~ 80 bp (primers) or 128 bp (adaptor-dimer) is visible in the Bioanalyzer traces, bring up the sample volume (from Step 3.13.9) to 50 µl with 0.1X TE buffer and repeat the SPRIselect Bead or NEBNext Sample Purification Bead Cleanup Step (Section 3.13).

Figure 3.14.2 Example of RNA library size distribution on a Bioanalyzer.



Please read the FAQ section on NEB.com for additional information about this product.

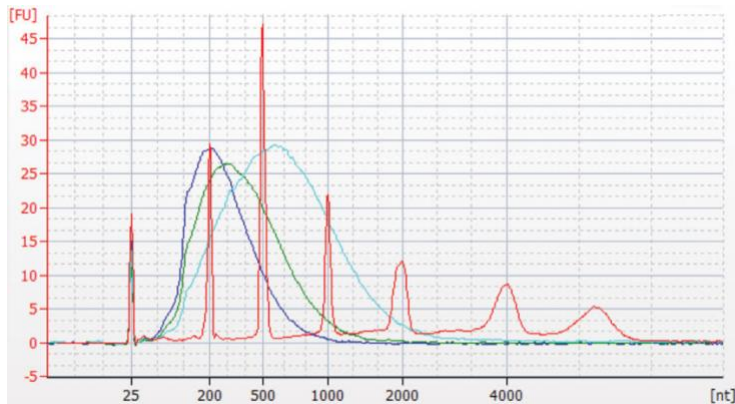
Section 4

Appendix for use with NEBNext Ultra II RNA Library Prep Kits for Illumina (NEB #E7760, NEB #E7770)

4.1. Fragmentation

Note: These recommendations have been optimized using Universal Human Reference Total RNA. Other types of RNA may require different fragmentation times.

Figure 4.1. Modified fragmentation times for longer RNA inserts.



RedLadder

Blue150-300 bp, mRNA fragmented for 15 minutes at 94°C

Green200-500 bp mRNA fragmented for 10 minutes at 94°C

Cyan400-1,000 bp mRNA fragmented for 5 minutes at 94°C

*Modified fragmentation times for longer RNA inserts. Bioanalyzer traces of RNA as shown in an RNA Pico Chip. mRNA isolated from Universal Human Reference RNA and fragmented with First Strand Synthesis Reaction Buffer and Random Primer Mix (2X) at 94°C for 5, 10 or 15 minutes, and purified using 2.2X volume of Agencourt RNAClean XP Beads. **For libraries with RNA insert sizes larger than 300 bp, fragment RNA between 5–10 minutes and remember to increase the incubation at 42°C from 15 to 50 minutes during the first strand cDNA synthesis reaction.***

4.2. Size Selection of Adaptor Ligated DNA

Note: Size selection should be done after adaptor ligation and USER digestion.



The size selection protocol is based on a starting volume of 96.5 µl. Size selection conditions were optimized with SPRIselect Beads and NEBNext Sample Purification Beads; however, AMPure XP Beads can be used following the same conditions. If using Ampure XP Beads, please allow the beads to warm to room temperature for at least 30 minutes before use.



Please adjust recommended bead volumes for each target size according to Table 4.2. The protocol below is for libraries with a 300 bp insert size (420 bp final library size).

Table 4.2: Recommended size selection conditions for libraries with insert sizes larger than 300 bp.



Note: Size selection for < 100 ng total RNA input is not recommended.

| LIBRARY PARAMETER | APPROXIMATE INSERT SIZE | 300 bp | 400 bp | 450 bp |
|------------------------------|--------------------------------|--------|--------|--------|
| | Approx. Final Library Size | 420 bp | 520 bp | 570 bp |
| BEAD VOLUME TO BE ADDED (µl) | 1 st Bead Selection | 25 | 20 | 15 |
| | 2 nd Bead Selection | 10 | 10 | 10 |

Note: Any differences in insert sizes between the Agilent Bioanalyzer and that obtained from paired end sequencing can be attributed to the higher clustering efficiency of smaller sized fragments.

- 4.2.1. Vortex SPRIselect Beads or NEBNext Sample Purification Beads to resuspend.
- 4.2.2. Add 25 µl of resuspended beads to the 96.5 µl ligation reaction. Mix well by pipetting up and down at least 10 times.
- 4.2.3. Incubate for **5 minutes** at room temperature.
- 4.2.4. Place the tube on an appropriate magnetic rack to separate the beads from the supernatant. If necessary, quickly spin the sample to collect the liquid from the sides of the tube or plate wells before placing on the magnetic rack. After the solution is clear (about 5 minutes), carefully transfer the supernatant containing your DNA to a new tube (**Caution: do not discard the supernatant**). Discard the beads that contain the unwanted large fragments.
- 4.2.5. Add 10 µl resuspended beads to the supernatant, mix well by pipetting up and down at least 10 times and incubate for 5 minutes at room temperature.
- 4.2.6. Place the tube/plate on an appropriate magnetic rack to separate the beads from the supernatant. If necessary, quickly spin the sample to collect the liquid from the sides of the tube or plate wells before placing on the magnetic rack. After the solution is clear (about 5 minutes), carefully remove and discard the supernatant that contains unwanted DNA. Be careful not to disturb the beads that contain the desired DNA targets (**Caution: do not discard beads**).
- 4.2.7. Add 200 µl of 80% freshly prepared ethanol to the tube while in the magnetic rack. Incubate at room temperature for 30 seconds, and then carefully remove and discard the supernatant.
- 4.2.8. Repeat Step 4.2.7 once.
- 4.2.9. Air dry the beads for up to 5 minutes while the tube/plate is on the magnetic rack with the lid open.
- Caution: Do not over-dry the beads. This may result in lower recovery of DNA target. Elute the samples when the beads are still dark brown and glossy looking, but when all visible liquid has evaporated. When the beads turn lighter brown and start to crack, they are too dry.**
- 4.2.10. Remove the tube/plate from the magnetic rack. Elute the DNA target from the beads by adding 17 µl of 0.1 X TE (provided) to the beads. Mix well on a vortex mixer or by pipetting up and down ten times. Quickly spin the tube and incubate for **2 minutes** at room temperature.
- 4.2.11. Place the tube on a magnetic rack. After the solution is clear (about 5 minutes), transfer 15 µl to a new PCR tube for amplification.

4.3. PCR Enrichment of Size-selected Libraries

Note: Size-selected libraries require 2 additional PCR cycles due to loss during size selection steps compared to non-size-selected libraries.

Check and verify that the concentration of your oligos is 10 µM on the label.



Use Option A for any NEBNext oligos kit where index primers are supplied in tubes. These kits have the forward and reverse primers supplied in separate tubes.

Use Option B for any NEBNext oligos kit where index primers are supplied in a 96-well plate format. These kits have the forward and reverse (i7 and i5) primers combined.

- 4.3.1. Set up the PCR reaction as described below based on the type of oligos (PCR primers) used.

4.3.1A. Forward and Reverse Primers Separate

| COMPONENT | VOLUME PER ONE LIBRARY |
|-----------------------------------------|------------------------|
| Adaptor Ligated DNA (Step 6.2.11) | 15 µl |
| • (blue) NEBNext Ultra II Q5 Master Mix | 25 µl |
| Universal PCR Primer/i5 Primer* | 5 µl |
| Index (X) Primer/ i7 Primer*, ** | 5 µl |
| Total Volume | 50 µl |

* NEBNext Oligos must be purchased separately from the library prep kit. Refer to the corresponding NEBNext Oligo kit manual for determining valid barcode combinations.

** Use only one i7 primer/ index primer per sample. Use only one i5 primer (or the universal primer for single index kits) per sample.

4.3.1B. Forward and Reverse Primers Combined

| COMPONENT | VOLUME PER ONE LIBRARY |
|-----------------------------------------|------------------------|
| Adaptor Ligated DNA (Step 4.2.11) | 15 µl |
| • (blue) NEBNext Ultra II Q5 Master Mix | 25 µl |
| Index Primer Mix* | 10 µl |
| Total Volume | 50 µl |

* NEBNext Oligos must be purchased separately from the library prep kit. Refer to the corresponding NEBNext Oligo kit manual for determining valid barcode combinations.

4.3.2 Mix well by gently pipetting up and down 10 times. Quickly spin the tube in a microcentrifuge.

4.3.3. Place the tube in a thermocycler with the heated lid set to 105°C. Perform PCR amplification using the following PCR cycling conditions:

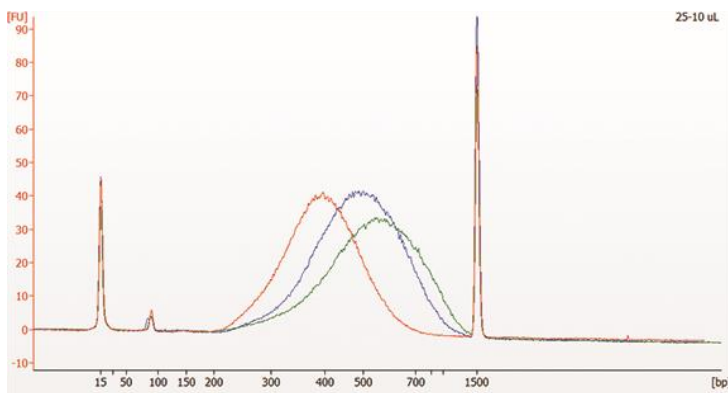
| CYCLE STEP | TEMP | TIME | CYCLES |
|----------------------|------|------------|---------------|
| Initial Denaturation | 98°C | 30 seconds | 1 |
| Denaturation | 98°C | 10 seconds | variable*, ** |
| Annealing/Extension | 65°C | 75 seconds | |
| Final Extension | 65°C | 5 minutes | 1 |
| Hold | 4°C | ∞ | |

* The number of PCR cycles should be adjusted based on RNA input. Size-selected libraries require additional 2 PCR cycles and should be adjusted accordingly. For example if a non-size selected library requires 8 PCR cycles, the size-selected library should be amplified for 10 cycles (8 + 2) after the size selection.

** It is important to limit the number of PCR cycles to avoid overamplification.

If overamplification occurs, a second peak ~ 1,000 bp will appear on the Bioanalyzer trace (See Figure 5.2 on page 27).

Figure 4.3: Bioanalyzer traces of size selected DNA libraries.



50 ng mRNA was fragmented with First Strand Synthesis Reaction Buffer and Random Primer Mix (2X) at 94°C for 15, 10 or 5 minutes. Libraries were size-selected as described in Table 4.2, then amplified by PCR, and run on Agilent Bioanalyzer DNA 1000 chip. Fragmentation times and corresponding size selection conditions are shown in the table below.

Table 4.3:

| LIBRARY SAMPLE | FRAGMENTATION TIME | 1 st BEAD SELECTION | 2 nd BEAD SELECTION |
|----------------|--------------------|--------------------------------|--------------------------------|
| Red | 10 minutes | 25 µl | 10 µl |
| Blue | 5 minutes | 20 µl | 10 µl |
| Green | 5 minutes | 15 µl | 10 µl |

For libraries with longer inserts (> 200 bp), remember to increase the incubation at 42°C from 15 to 50 minutes during the First Strand cDNA Synthesis reaction.

Section 5
Troubleshooting Guide for use with
NEBNext Ultra II RNA Library Prep Kits for Illumina (NEB #E7760, NEB #E7770)

| OBSERVATIONS | POSSIBLE CAUSES | EFFECT | SUGGESTED SOLUTIONS |
|-----------------------------------------------------------------------------------------------------------------------------|--------------------------------------------------------------------------------------------------------------------------------------------------------------------------------------------------------------------------------------------------------------------------------------------------------------------------------------------------------------------------------------------------------------------------------------------------------------------|---------------------------------------------------------------------------------------------------------------------------------------|--------------------------------------------------------------------------------------------------------------------------------------------------------------------------------------------------------------------------------------------------------------------------|
| Presence of Bioanalyzer peaks < 85 bp (Figure 5.1) | <ul style="list-style-type: none"> • Presence of Primers remaining after PCR clean up | Primers cannot cluster or be sequenced, but can bind to flowcell and reduce cluster density | <ul style="list-style-type: none"> • Clean up PCR reaction again with 0.9X SPRIselect Beads or NEBNext Sample Purification Beads (second clean up may result in reduction of library yield) |
| Presence of ~127 bp adaptor-dimer Bioanalyzer peak (Figure 5.1) | <ul style="list-style-type: none"> • Addition of non-diluted adaptor • RNA input was too low • RNA was over fragmented or lost during fragmentation • Inefficient Ligation | Adaptor-dimer will cluster and be sequenced. If ratio is low compared to library, may not be a problem but some reads will be dimers. | <ul style="list-style-type: none"> • Dilute adaptor before setting up ligation reaction • Clean up PCR reaction again with 0.9X SPRIselect Beads or NEBNext Sample Purification Beads (second clean up may result in reduction of library yield) |
| Presence of additional Bioanalyzer peak at higher molecular weight than the expected library size (~ 1,000 bp) (Figure 5.2) | <ul style="list-style-type: none"> • PCR artifact (over-amplification). Represents single-stranded library products that have self-annealed. If the PCR cycle number (or PCR input amount) is too high; in the late cycles of PCR the primers become limiting. Therefore, the adaptor sequences on either end of the fragment anneal to each other. This creates heteroduplexes with different insert sequences that run slower in the Bioanalyzer. | If ratio is low compared to library, may not be a problem for sequencing | <ul style="list-style-type: none"> • Reduce number of PCR cycles. |
| Broad library size distribution | <ul style="list-style-type: none"> • Under-fragmentation of the RNA | Library size will contain longer insert sizes | <ul style="list-style-type: none"> • Increase RNA fragmentation time |

Figure 5.1:

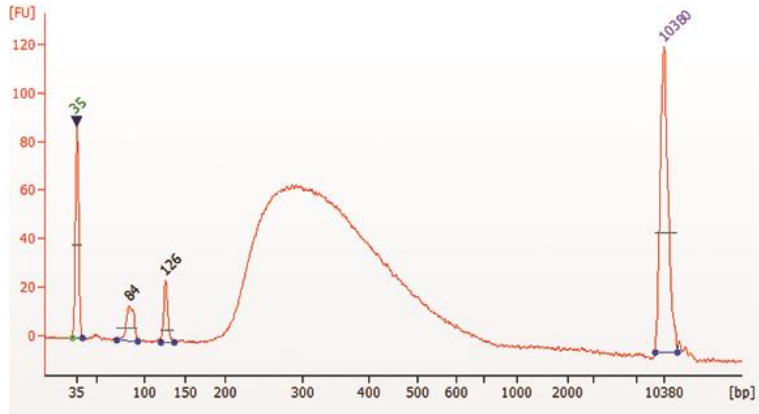
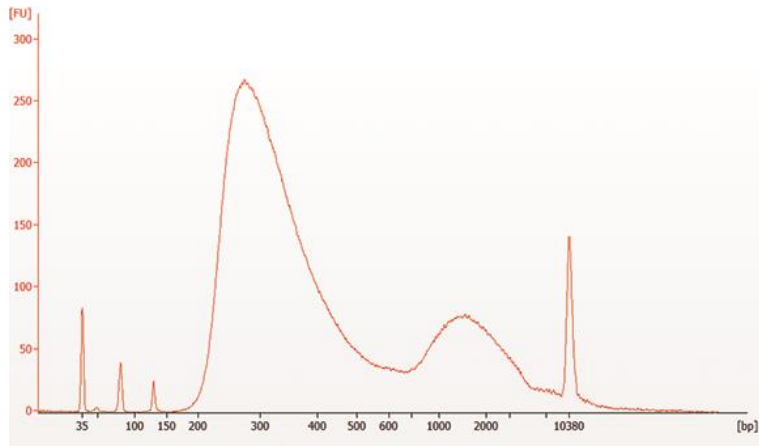


Figure 5.2:



Kit Components

NEB #E7750S Table of Components

| NEB # | PRODUCT | VOLUME |
|---------|--------------------------------------------|----------|
| E7752-2 | NEBNext Thermostable RNase H | 0.012 ml |
| E6312-2 | RNase H Reaction Buffer | 0.012 ml |
| E7751-2 | NEBNext Globin and rRNA Depletion Solution | 0.018 ml |
| E6314-2 | NEBNext Probe Hybridization Buffer | 0.012 ml |
| E7753-2 | NEBNext DNase I | 0.015 ml |
| E6315-2 | DNase I Reaction Buffer | 0.03 ml |
| E6317-2 | Nuclease-free Water | 0.4 ml |

NEB #E7750L Table of Components

| NEB # | PRODUCT | VOLUME |
|---------|--------------------------------------------|----------|
| E7752-3 | NEBNext Thermostable RNase H | 0.048 ml |
| E6312-3 | RNase H Reaction Buffer | 0.048 ml |
| E7751-3 | NEBNext Globin and rRNA Depletion Solution | 0.072 ml |
| E6314-3 | NEBNext Probe Hybridization Buffer | 0.048 ml |
| E7753-3 | NEBNext DNase I | 0.06 ml |
| E6315-3 | DNase I Reaction Buffer | 0.120 ml |
| E6317-3 | Nuclease-free Water | 1.5 ml |

NEB #E7750X Table of Components

| NEB # | PRODUCT | VOLUME |
|---------|--------------------------------------------|----------|
| E7752-4 | NEBNext Thermostable RNase H | 0.192 ml |
| E6312-4 | RNase H Reaction Buffer | 0.192 ml |
| E7751-4 | NEBNext Globin and rRNA Depletion Solution | 0.288 ml |
| E6314-4 | NEBNext Probe Hybridization Buffer | 0.192 ml |
| E7753-4 | NEBNext DNase I | 0.24 ml |
| E6315-4 | DNase I Reaction Buffer | 0.48 ml |
| E6317-4 | Nuclease-free Water | 6.0 ml |

NEB #E7755S Table of Components

| NEB # | PRODUCT | VOLUME |
|---------|--------------------------------------------|----------|
| E7752-2 | NEBNext Thermostable RNase H | 0.012 ml |
| E6312-2 | RNase H Reaction Buffer | 0.012 ml |
| E7751-2 | NEBNext Globin and rRNA Depletion Solution | 0.018 ml |
| E6314-2 | NEBNext Probe Hybridization Buffer | 0.012 ml |
| E7753-2 | NEBNext DNase I | 0.015 ml |
| E6315-2 | DNase I Reaction Buffer | 0.03 ml |
| E6317-2 | Nuclease-free Water | 0.4 ml |
| E6351S | NEBNext RNA Sample Purification Beads | 0.66 ml |

NEB #E7755L Table of Components

| NEB # | PRODUCT | VOLUME |
|--------------|--------------------------------------------|---------------|
| E7752-3 | NEBNext Thermostable RNase H | 0.048 ml |
| E6312-3 | RNase H Reaction Buffer | 0.048 ml |
| E7751-3 | NEBNext Globin and rRNA Depletion Solution | 0.072 ml |
| E6314-3 | NEBNext Probe Hybridization Buffer | 0.048 ml |
| E7753-3 | NEBNext DNase I | 0.06 ml |
| E6315-3 | DNase I Reaction Buffer | 0.120 ml |
| E6317-3 | Nuclease-free Water | 1.5 ml |
| E6351L | NEBNext RNA Sample Purification Beads | 2.64 ml |

NEB #E7755X Table of Components

| NEB # | PRODUCT | VOLUME |
|--------------|--------------------------------------------|---------------|
| E7752-4 | NEBNext Thermostable RNase H | 0.192 ml |
| E6312-4 | RNase H Reaction Buffer | 0.192 ml |
| E7751-4 | NEBNext Globin and rRNA Depletion Solution | 0.288 ml |
| E6314-4 | NEBNext Probe Hybridization Buffer | 0.192 ml |
| E7753-4 | NEBNext DNase I | 0.24 ml |
| E6315-4 | DNase I Reaction Buffer | 0.48 ml |
| E6317-4 | Nuclease-free Water | 6.0 ml |
| E6351X | NEBNext RNA Sample Purification Beads | 10.6 ml |

Checklist Globin and rRNA Depletion Kit

1. Hybridize the Probes to the RNA

- 1.1. Assemble Probe/RNA Hybridization Reaction
 - 1.1.1. Total RNA in nuclease-free water 10 μ l
 - 1.1.2. NEBNext Globin and rRNA Depletion Solution 3 μ l
 - 1.1.3. Probe Hybridization Buffer 2 μ l
- 1.2. Mix 10 times
- 1.4. Quick spin
- 1.5. Run in thermocycler (95°C for 2 min, 95-22°C 0.1°C/sec, 22°C 5 min; heated lid 105C)
- 1.6. Quick spin, place on ice

2. RNase H Digestion

- 2.1. Assemble RNaseH Digestion Reaction
 - 2.1.1. Hybridized RNA 15 μ l
 - 2.1.2. NEBNext Thermostable RNase H 2 μ l
 - 2.1.3. RNase H Reaction Buffer 2 μ l
 - 2.1.4. Nuclease-free water 1 μ l
- 2.2. Mix 10 times
- 2.3. Quick spin
- 2.4. Incubate in thermocycler (50°C for 30 min)
- 2.5. Quick spin, place on ice

3. DNase I Digestion

- 3.1. Assemble DNase I Digestion Reaction
 - 3.1.1. RNase H treated RNA 20 μ l
 - 3.1.2. DNase I Reaction Buffer 5 μ l
 - 3.1.3. NEBNext DNase I 2.5 μ l
 - 3.1.3. Nuclease-free water 22.5 μ l
- 3.2. Mix 10 times
- 3.3. Quick spin
- 3.4. Incubate in thermocycler (37°C for 30 min)
- 3.5. Quick spin, place on ice

4. RNA Purification Using Agencourt RNAClean XP Beads or NEBNext RNA Sample Purification Beads

- 4.1. Add 90 μ l of beads and mix 10 times
- 4.2. Incubate on ice 15 min
- 4.3. Place on magnetic rack until solution is clear
- 4.4. Remove supernatant
- 4.5. Add 200 μ l 80% ethanol, remove after 30 seconds
- 4.6. Repeat Step 4.5 once
- 4.7. Air dry for up to 5 min
- 4.8. Add 7 μ l of nuclease-free water and mix 10 times; wait 2 min
- 4.9. Place on magnet 5 min
- 4.10. Transfer 5 μ l to new tube
- 4.11. Place on ice or store

Revision History

| REVISION # | DESCRIPTION | DATE |
|------------|------------------|-------|
| 1.0 | N/A | 5/19 |
| 2.0 | Update protocols | 11/20 |

This product is intended for research purposes only. This product is not intended to be used for therapeutic or diagnostic purposes in humans or animals.

This product is covered by one or more patents, trademarks and/or copyrights owned or controlled by New England Biolabs, Inc. For more information about commercial rights, please email us at busdev@neb.com. While NEB develops and validates its products for various applications, the use of this product may require the buyer to obtain additional third party intellectual property rights for certain applications.

This product is licensed for research and commercial use from Bio-Rad Laboratories, Inc., under U.S. Pat. Nos. 6,627,424, 7,541,170, 7,670,808, 7,666,645, and corresponding patents in other countries. No rights are granted for use of the product for Digital PCR or real-time PCR applications, with the exception of quantification in Next Generation Sequencing workflows.

Limited Use Label License: This product and its use are the subject of one or more issued and/or pending U.S. and foreign patent applications owned by Max Planck Gesellschaft. The purchase of this product from New England Biolabs, Inc., its affiliates, or its authorized resellers and distributors conveys to the buyer the non-transferable right to use the purchased amount of the product and components of the product in research conducted by the buyer (whether the buyer is an academic or for profit entity) or for limited commercial purposes that are pre-approved by New England Biolabs, Inc. The purchase of this product does not convey a license under any claims in the foregoing patents or patent applications directed to producing the product. The buyer cannot sell or otherwise transfer this product or its components to a third party or otherwise use this product for the following COMMERCIAL PURPOSES: (1) use of the products or its components in manufacturing; (2) use of the product or its components for therapeutic or prophylactic purposes in humans or animals.

AGENCOURT[®], AMPURE[®] and RNACLEAN[®] are registered trademarks of Beckman Coulter, Inc.

BIOANALYZER[®] and TAPESTATION[®] are registered trademarks of Agilent Technologies, Inc.

ILLUMINA[®] is a registered trademark of Illumina, Inc.

ALPAQUA[®] is a registered trademark of Alpaqua Engineering, LLC

QUBIT[®] and RIBOGREEN[®] are registered trademarks of Molecular Probes, Inc.

© Copyright 2020, New England Biolabs, Inc.; all rights reserved



www.neb.com



be INSPIRED
drive DISCOVERY
stay GENUINE