

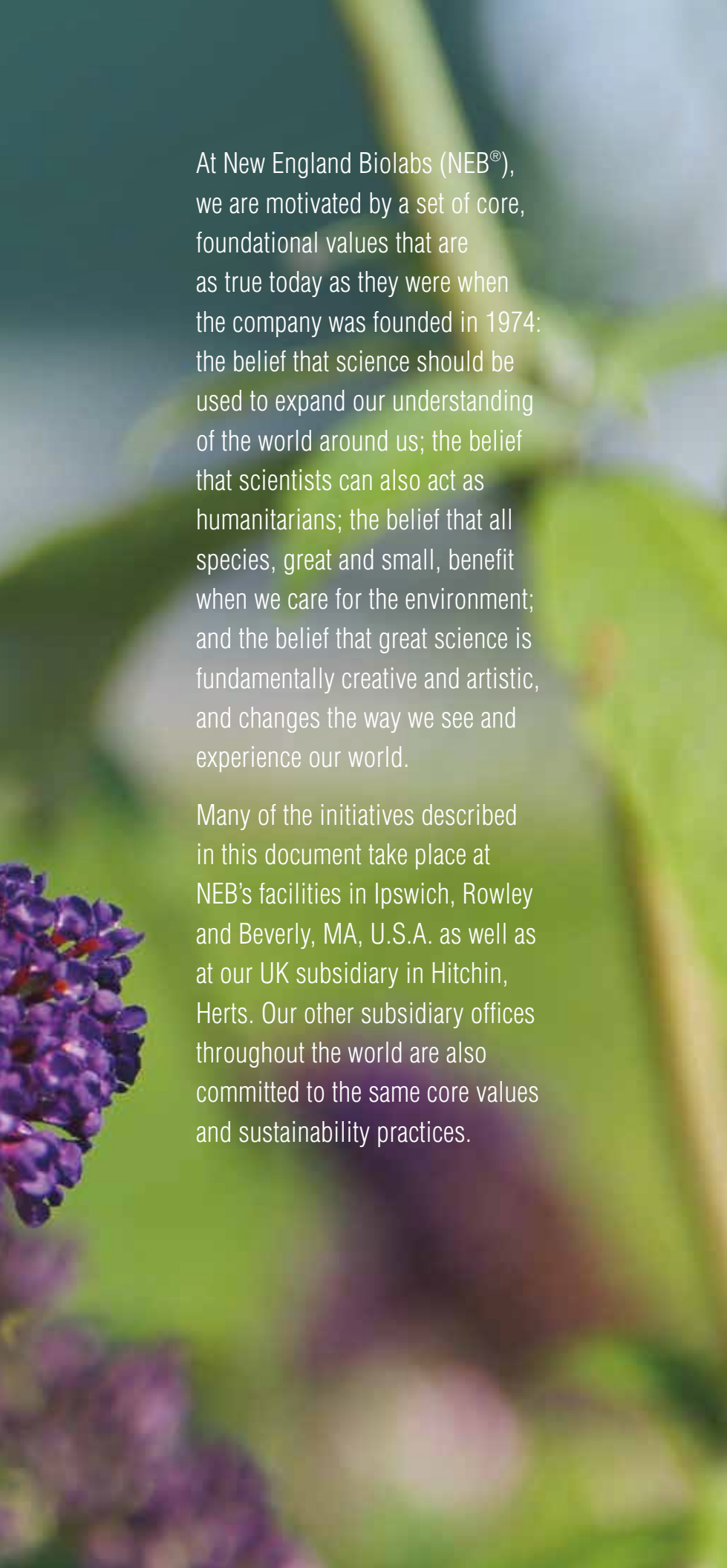
Social Responsibility & Sustainability

New England Biolabs



“We believe that the pursuit of science is one path to building a greener and more compassionate world.”





At New England Biolabs (NEB®), we are motivated by a set of core, foundational values that are as true today as they were when the company was founded in 1974: the belief that science should be used to expand our understanding of the world around us; the belief that scientists can also act as humanitarians; the belief that all species, great and small, benefit when we care for the environment; and the belief that great science is fundamentally creative and artistic, and changes the way we see and experience our world.

Many of the initiatives described in this document take place at NEB's facilities in Ipswich, Rowley and Beverly, MA, U.S.A. as well as at our UK subsidiary in Hitchin, Herts. Our other subsidiary offices throughout the world are also committed to the same core values and sustainability practices.

Contents

3	Being a Responsible Company
4	Activism B Corp Certification Diversity, Equity and Inclusion Commitment to the Arts
10	Scientific Advancement and Education Passion in Science® Awards Scientific Conferences Innovation Awards Donald G. Comb Honorary Lecture Weekly Seminar Series Student Internships Molecular Biology Summer Workshop Educational Course Support Kids Science Day
16	Philanthropy and Foundation Support Creative Action Institute New England Biolabs Foundation Ocean Genome Legacy NEB UK Corporate Donations Programme
18	Environmental Stewardship Environmental Support NEBees the Woodland Trust Responsibility on Campus Our Facility Wastewater Treatment Waste Management & Recycling Our Hitchin, UK Subsidiary Responsible Business Practices The NEB Shipping Box Recycling Programme & Eco Boxes Carbon Offsetting

Employee well-being and activism

11

years is the average tenure
of an NEB employee

“We are committed not only to further reducing our environmental impact but, just as importantly, to improving the well-being of our employees, surrounding communities and the life science industry. We hope to see more science organizations join us in this endeavor.”

Our corporate culture transcends traditional employee well-being programs by recognizing the importance of healthy minds and bodies. Innovation from all employee levels is encouraged and recognized, as is community service, support of education and appreciation of the arts.



Certified B Corporation®

NEB is proud to have become a Certified B Corporation (B Corp™), joining a global community of people using business as a force for good™. With this certification, NEB becomes one of only a select few life science organizations to be recognized for its commitment to environmental stewardship and social responsibility.

B Corps are for-profit businesses that meet the highest verified standards of social and environmental performance, transparency and accountability – balancing profit and purpose. For more information on B Corp Certification, visit bcorporation.net.



“NEB is committed to its role in advancing racial justice and equity within our company, the life sciences industry and the broader community.”

Diversity, Equity and Inclusion

Deep-rooted racial inequities and systemic discrimination against the Black community must be acknowledged by all of us. Furthermore, we recognize that Black, Indigenous, People of Color (BIPOC) and other marginalized groups experience discrimination and inequities in ways that are egregious and painfully routine in the life science industry and STEM disciplines.





At NEB, we strive to have a diverse culture that encourages open communication and inclusive behaviors which affords everyone an opportunity to have a voice into how we address these complex issues.

Our Diversity, Equity and Inclusion Team is dedicated to developing a detailed and accountable plan to put our passion into practice. The team is divided into four groups:



Social Justice Philanthropy

support and partner with groups that aim to advance racial justice, social justice, environmental justice, and equity in science.



STEM Education & Mentorship

actively partner with local organizations to provide access to NEB's educational resources and mentoring opportunities, such as science projects, curriculum materials, and both high school and college internships.



Social Justice Outreach

alleviate the burden that communities of color face during the current COVID-19 pandemic, such as providing supplies to support children and family needs.



Diversity, Equity & Inclusion @ NEB

bring anti-racism education to NEB by providing access to resources, research, and speaker seminars to improve awareness and understanding.



“NEB has supported my passion for conducting cutting edge research AND raising awareness of the beauty of bacteria through the universal language of art. By collaborating with Maria, a local artist, we have been able to produce award winning agar art.”

MEMO, NEB RESEARCHER AND ADVOCATE
OF THE ARTS FOR OVER 16 YEARS



“We believe that there is a close connection between art and science—both are important aspects of culture and driven by creativity.”

Commitment to the Arts

NEB supports many local art-based organizations and art schools. Our campus is also filled with art, including sculptures, paintings, ceramics and artifacts from all over the world. NEB headquarters features revolving art exhibitions from local and regional artists in the Boston area. These works can be purchased by NEB, or its employees, in support of the local art community.

6

local artists' inspiring work was displayed at NEB's headquarters in Ipswich, MA in 2021

6

local artists' inspiring work was displayed at NEB's Rowley, MA production facility in 2021

Scientific Advancement and Education

“We are dedicated to supporting young scientists and science educators by providing reagents, educational materials and technical expertise.”



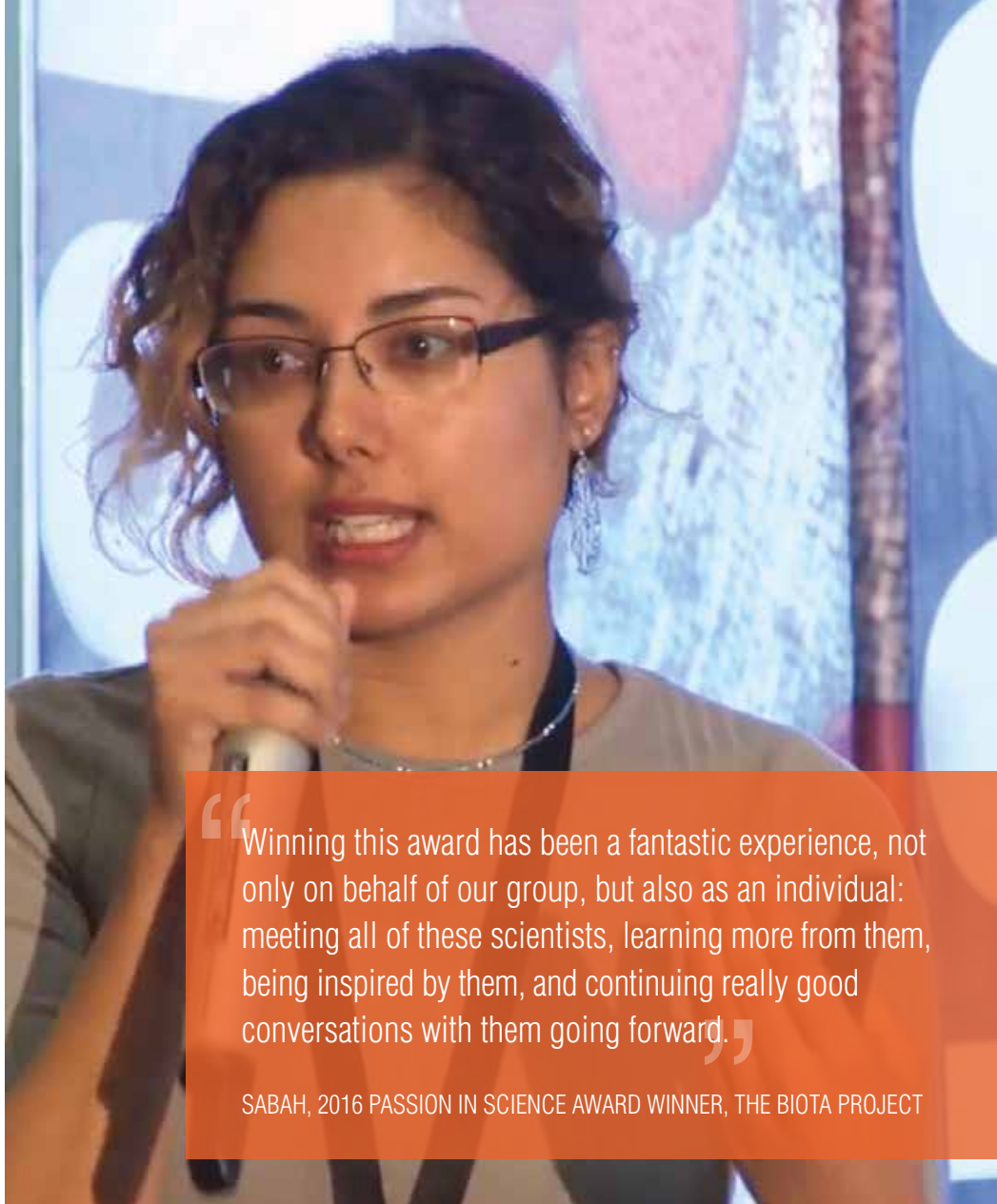
Passion in Science Awards®

In commemoration of our 40th anniversary, NEB introduced the Passion in Science Awards to recognize members of the scientific community who are committed to making a difference through their science, service, stewardship or artistic endeavors.

Based on NEB's foundational values, the Passion in Science Awards are offered in four categories:

- Inspiration in Science/Scientific Mentorship
- Humanitarian Duty
- Environmental Stewardship
- Arts and Creativity

To learn more about the Passion in Science Awards and view past winners' stories, visit www.neb.com/PassioninScience



“Winning this award has been a fantastic experience, not only on behalf of our group, but also as an individual: meeting all of these scientists, learning more from them, being inspired by them, and continuing really good conversations with them going forward.”

SABAH, 2016 PASSION IN SCIENCE AWARD WINNER, THE BIOTA PROJECT

43

**Passion in Science Awards
have been given to
well-deserving scientists**



2019 Passion in Science Award Winners



“Presenting my work at the annual AGBT conference gives me the opportunity to share my research with colleagues, receive feedback, and opens the door for potential collaborations.”

DEYRA, NEB APPLICATIONS AND PRODUCT DEVELOPMENT SCIENTIST FOR OVER 7 YEARS



Scientific Conferences

NEB encourages its employees to attend scientific conferences. This is a great opportunity for our scientists to present their work and develop relationships with other researchers working in their area of interest.

Innovation Awards

At NEB, we feel it is important to emphasize “blue-sky” thinking. We encourage our employees to take risks and execute on their new ideas. Each year, we are proud to recognize employees who contribute and bring to fruition novel ideas that help make NEB a more efficient or better place to work, or that help drive scientific innovation.

Donald G. Comb Honorary Lecture

This annual event honors Don Comb, NEB's founder and first CEO. When Dr. Comb founded NEB in 1974, he brought a vision for the company that integrates production of molecular biology reagents with basic research. Selected speakers are pioneers of basic research who have had an impact on molecular biology and related fields, especially those whose work has significant impact on problems affecting the world at large.

Weekly Seminar Series

In addition to our own in-house lecture series, NEB also invites guest speakers to present their work each week. These seminars cover a wide variety of topics and include cutting-edge research, and they are always well attended. The seminar is followed by lively lunchtime discussions between the speaker and NEB researchers.





Student Internships

For over 40 years, NEB has offered internships to students from local, national and international high schools and universities, which can take place during the summer or the school year. This experience has helped many of our interns go on to become prominent scientists and business leaders, and it also gives our employees the rewarding opportunity to act as mentors to young and enthusiastic students.

Molecular Biology Summer Workshop

For over 35 years, NEB has sponsored a course for non-scientists who want to learn the basics of molecular biology. This two-week intensive, hands-on course has been attended by over 4,000 students and is the largest and longest running molecular biology course for professionals in the world. To learn more, visit www.neb.com/summerworkshop.

Educational Course Support

NEB is proud to offer reagents and technical support to high school and collegiate teaching labs and educational courses in the US. NEB also supplies reagents, free of charge, to participants in both iGEM and BioBuilder®. To learn more, visit www.neb.com/student-services.

Kids Science Day

In 2017, NEB introduced the “NEB Kids Science Day.” Filled with educational activities and presentations, the Kids Science Day is designed to get young children interested in science, technology, engineering, art and mathematics (STEAM). This program was extended to include teachers in the local community.



“Having NEB scientists present their work at my school has made me even more excited about a possible career in the life sciences!”

TESSA, IPSWICH HIGH SCHOOL STUDENT,
IPSWICH, MA



Philanthropy and Foundation Support

Our philanthropic focus is on educational, environmental, civic and cultural arts initiatives that strengthen our community and improve life for its citizens and future generations. NEB has played a role in the establishment of several foundations devoted to humanitarian efforts and environmental awareness.



Women's Justice Initiative display portraits and statements about why they work to advance gender equality in Central America. Photo credit: © Isabel Carrión, Field Project Manager for The Creative Action Institute

The Creative Action Institute:

Formerly known as ArtCorps, the Creative Action Institute works at the intersection of creativity and social change. Members work to globally build the capacity of leaders and organizations for innovation, collaboration and resilience to advance conservation, health and human rights.

Visit CreativeActionInstitute.org to learn more.

New England Biolabs Foundation: Established in 1982 by NEB founder Dr. Donald Comb, the New England Biolabs Foundation (NEBF) is a private, independent foundation whose mission is to foster community-based conservation of landscapes and seascapes, and the bio-cultural diversity found in these places. For more information, visit nebf.org

Ocean Genome Legacy:

The Ocean Genome Legacy Center of New England Biolabs is a non-profit research center dedicated to conservation of marine genomic diversity and maintaining a repository of genomic DNA from marine organisms around the world. Learn more at northeastern.edu/ogl.

Corporate Donations Committee

A volunteer committee of NEB employees from a variety of departments reviews and approves requests for monetary donations to a wide range of grassroots community organizations.

NEB UK's charitable donations are disbursed directly to charities proposed by UK employees after the approval of the UK General Manager. Charities are chosen in line with NEB UK's Corporate Responsibility Policy and philanthropic focus on educational, environmental, civic and cultural arts efforts. We have a number of routes for donations through our UK Corporate Donations Programme:

- NEB hosts a corporate giving programme. Each year the NEB UK enables all employees to choose a charity for the company to donate to on their behalf.
- NEB UK has been a corporate member of the Woodland Trust since 2011. In addition to our annual membership payment we also make a donation each year as a result of our polystyrene shipping box return scheme. See page 30 and learn more about the NEB Shipping Box Recycling Programme at www.neb.uk.com/box-recycling
- In lieu of purchasing charity Christmas cards NEB UK produces a digital Christmas card and makes a donation each year to a charity proposed by UK employees.
- Some of our marketing promotions highlight the work of a specific charity or the philanthropic or environmental activities of NEB in the UK and globally, with a donation pledged to charity for each purchase of a product in the promotion.



Photo credit: © Jessica Brown; Southwest Cameroon; New England Biolabs Foundation



Environmental Stewardship

Environmental stewardship is one of the founding principles of NEB. By promoting and supporting like-minded organizations worldwide for almost 50 years, NEB hopes to ensure the protection and preservation of natural resources, both locally and globally.

Some of the environmental groups NEB has supported include:

The Trustees of Reservations, an organization dedicated to the preservation of properties with exceptional scenic, historic, and ecological value in Massachusetts for public use and enjoyment.

Conservation Law Foundation, whose mission is to utilize their expertise in law, science and the market to address New England's environmental challenges, and create solutions that preserve our natural resources, build healthy communities and sustain a vibrant economy.

Essex County Greenbelt, an organization designed to help landowners, farmers, cities, towns and organizations realize their land conservation vision. As a result of their efforts, they have protected over 15,000 acres of land in Essex County.

The Ipswich River Watershed Association works to protect nature and make sure that there is enough clean water for people, fish and wildlife, today and for our children and theirs.



NEB participants in The Run of the Charles



“Participating in the Run of the Charles gives me the opportunity to spend time with my coworkers and to enjoy the beauty of nature found along the Charles River.”

LINDA, NEB MARKETING AND ADVOCATE OF THE ENVIRONMENT FOR OVER 35 YEARS



The Charles



nty Greenbelt Bike Race



NEBees™

New England Biolabs (UK) Ltd in partnership with The Honeybee Man Ltd has sponsored the setting up of two new honey bee colonies in an apiary in Weston, Hertfordshire. Along with this sustainable beekeeping company, we will help to drive an increase in the UK honey bee population. At the height of summer each hive has almost 80,000 honeybees in residency. That's a lot of NEBees!







NEB UK is a Corporate Member of the Woodland Trust

NEB (UK) Ltd is a corporate member of the Woodland Trust. As the UK's leading woodland conservation charity, the Woodland Trust works to create, protect and restore native woodland across the UK. They have planted more than 40 million trees since 1972 and they plan to have planted a further 64 million by 2025. In addition to the obvious task of planting trees they are also involved in lobbying and working with national government to ensure woods and trees are recognised in policy and investment decisions and to help deliver on these policies by working with local government to plant trees, create woods and better protect existing woods and trees including ancient woodlands.

The UK has only 13% woodland cover, compared with an EU average of 37% and ancient woodland now covers only around 2% of the UK. Many wildlife species are at risk as habitats shrink including butterflies: 72% of British butterfly species have declined since 2005. The charity plants new trees and woodland close to existing wildlife-rich areas such as ancient woods or concentrations of ancient trees. This buffers them from the impacts of neighbouring land use and connects existing habitats. The Woodland Trust is working closely with landowners to restore what is left of the UK's ancient woodland with careful woodland management to let in sunlight encouraging native species to thrive again, reversing years of damage.



Woodland Trust
Corporate Member



In addition to our membership donation to the Woodland Trust we also run a Shipping Box Recycling Programme. For every box that we receive back from you, this enables us to make a donation to the Woodland Trust (see page 30 for more details).

Read more about the work of the Woodland Trust at www.woodlandtrust.org.uk

Environmental Responsibility on the NEB campus

We continuously strive for improvement in our business processes in order to minimize and, where possible, mitigate our impact on the environment.

NEB headquarters, located in Ipswich, MA, lies on >160 acres of mixed forest, wetlands and agricultural land, with public trails for hiking, skiing, bird-watching and horseback riding. This provides a home for a vast array of wildlife species. An internal email alert system called “The Nature Network” allows employees to share sightings of the diverse wildlife gracing our campus. This in turn led to three ongoing wildlife conservation efforts at NEB: our native bird nest box project, our glass window bird impact minimization project, and our turtle roadway assistance project.

The NEB nest box project found its inspiration in the large number of bluebirds seen on our campus each spring. We have a network of maintained nest boxes designed for attracting bluebirds, and also other native nesting birds, such as black-capped chickadees, wrens and tree swallows.





Our glass window bird impact minimization project helps prevent the loss of bird life through collisions with glass windows. NEB places ultraviolet-visible emblems on many of our glass windows, concentrating on areas that have been identified as problematic.

The wetlands that lie adjacent to the NEB campus are home to eastern painted turtles and snapping turtles. As the females travel to dig nests and lay eggs, they are directly in harm's way as they cross our roadways. A yearly informational summary is emailed to every employee regarding how to safely monitor or actively assist any turtle crossing the company's roads, and roadside signage informs visitors to take caution.

“We feel quite fortunate to have our headquarters located on a campus surrounded by such natural beauty. This instills a strong feeling of responsibility to be a force for positive change regarding the wildlife around us.”

BECKY, NEB APPLICATIONS AND
PRODUCT DEVELOPMENT SCIENTIST
AND ADVOCATE FOR THE NATURAL
WORLD FOR OVER 35 YEARS

Our Facility

NEB's modern 140,000 square foot laboratory building on the Ipswich, MA campus is LEED® (Leadership in Energy and Environmental Design) certified, a distinction based on a suite of environmentally focused standards that include site sustainability, water efficiency, energy conservation and atmospheric protection, choice of building materials and resources, indoor environmental quality, innovation and building design. In 2009, NEB also received a "sustainable design" award from the Boston Society of Architects. NEB has also received ISO 14001 certification, a quality standard for environmental management systems.

Some examples of our building design include:

- A lighting control system that dynamically adapts lighting to building occupancy
- A heat recovery system, in which the heat that is exhausted from the building is recycled to help heat incoming fresh air
- Chillers that use Free Cooling when outside temperature is below 50°F
- High efficiency motors and lights, which reduce the speed of motors when maximum flow is not needed

Environmentally-sound building choices:

- 100% of the total roofing is energy star compliant
- 7% of the building is composed of recycled material
- Low VOC paints, carpets and adhesives are used inside the facility
- Conservation of the property's trees and land, which exceeds open space requirements by 54%
- Installation of solar panels to provide 11% of NEB's annual electric consumption





Wastewater Treatment

Our main campus is located adjacent to the Ipswich River Watershed, a complex and sensitive ecosystem comprised of 45 tributary streams that covers 155 square miles and ultimately provides drinking water to 350,000 people in 14 communities. Building a full-scale life science reagent manufacturing operation in this setting presented an obvious challenge.

We partnered with an environmental engineering firm to design a wastewater treatment system that utilizes and accelerates processes found in streams and wetlands, and employs proven waste water treatment practices. This innovative method can treat up to 27,500 gallons of effluent per day through a series of filtration beds and aerated translucent tanks that host plant communities and aerobic microorganisms. The entire wastewater stream from our facility is treated, and the clean effluent is used for groundwater recharging, irrigation or it is disinfected and used to flush our toilets.

27,500

**gallons of effluent
are treated per day
and can be used for
groundwater recharge**

“Working at NEB has shown me the importance of composting and recycling, and how simple changes can make a big difference.”

CHRISTINE, PRODUCTION GROUP LEADER AND
NEB EMPLOYEE FOR OVER 11 YEARS

Waste Management and Recycling

Due to the inevitability of waste generation in any manufacturing operation, we always strive for disposal options that minimize impact on the environment.

Recycling and composting are two ways NEB works to reduce its carbon footprint. Furthermore, NEB requires that third party hazardous waste contractors use waste-to-energy (also known as energy recovery) incineration, whenever possible. None of the waste generated by NEB headquarters goes into landfills.

Cafeteria waste is collected as compostable material and used by local farmers for livestock feed, plant/tree mulching and to restore their soil. All cups, utensils, straws, etc. are compostable. Cooking oil and grease are collected and converted to biofuel. This diverts over 8,000 lbs of waste per month from landfills.

Recyclables are collected in the labs, cafeteria and kitchenette areas. Our extensive recycling programme includes glass, plastic, paper, aluminum, cardboard, polystyrene and wood pallets.

Biological waste generated in our research laboratories and production suites is processed by a carefully selected medical waste vendor. After rendering the waste non-infectious, the residual material is further processed and used to manufacture low grade plastic construction materials.

In the UK our chosen waste management company works towards zero landfill by employing anaerobic digestion and waste-to-energy as well as operating their own materials recycling facility. Our obsolete computing equipment is securely recycled by providers that ensure absolutely everything is either reused or recycled. After a data sanitization process, all hardware that can be reused is refurbished and electrical safety tested and all faulty/obsolete hardware is broken down for materials recycling. All destroyed data-bearing media is recycled as materials.



25,782

pounds of solid biological waste was recycled in 2020

80

tons of cafeteria waste was turned into compost in 2020

84

tons of recyclables (cardboard, plastic, paper, glass, metal) was collected in 2020



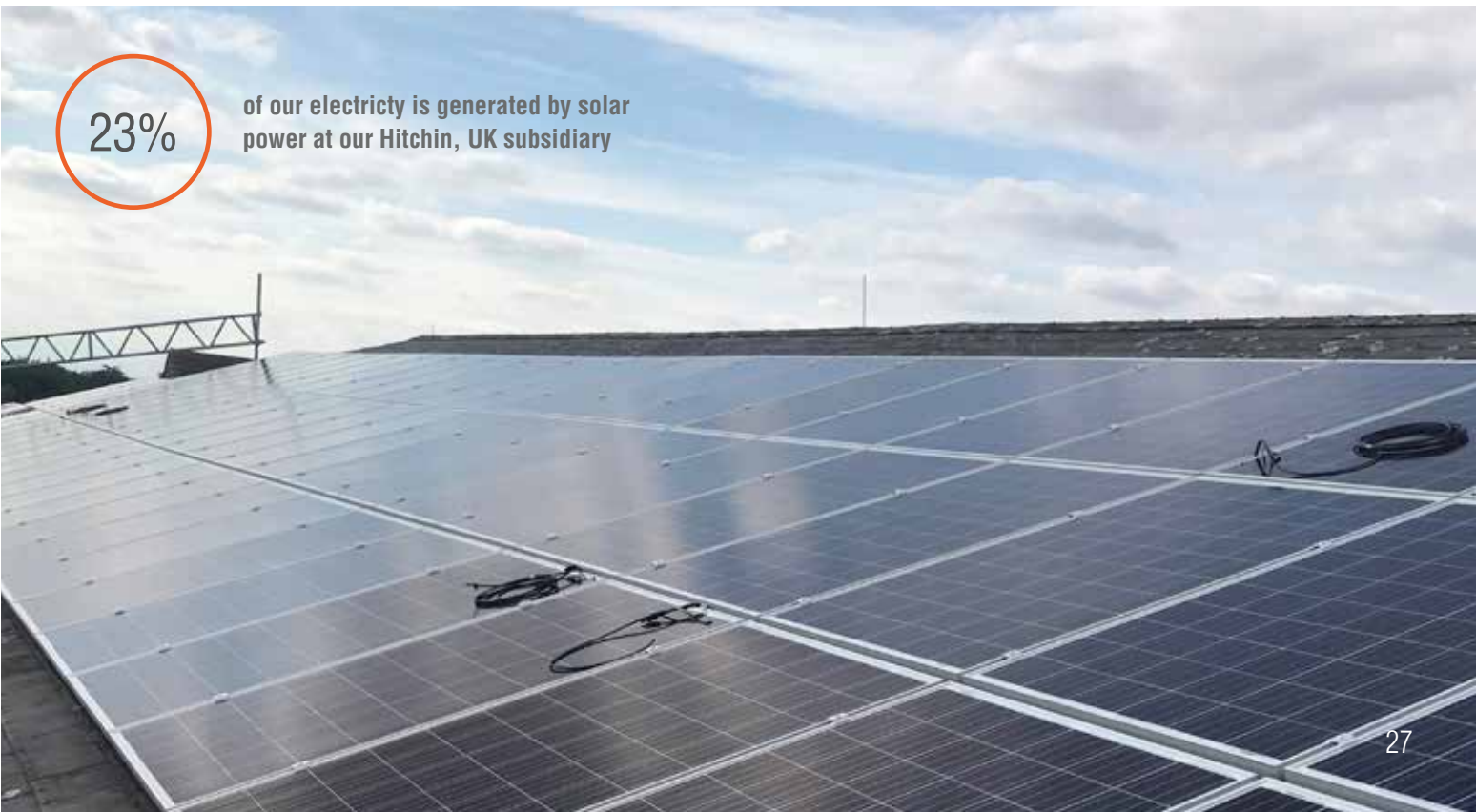
Our UK Subsidiary Facility

Energy-efficiency – We have replaced our internal lighting with sensor-controlled LED lighting in the UK Office and warehouse reducing electricity usage by approximately 23%. We upgraded the insulation in our roof cavity and our building's energy efficiency is now rated C, which is significantly better than buildings of a similar type and age (typically rated D).

A++ rated, energy-efficient freezers – The majority of our warehouse freezers feature optimised insulation and environmentally friendlier R290 refrigerant contributing significantly to appliance economy. R290 refrigerant has a minimal greenhouse effect and no ozone depletion potential.

Green Car Fleet & Electric Vehicle Charging- Our company car fleet is 100% electric or hybrid vehicles for field-based UK staff. Our field staff in London use public transport. We have installed EV charging points at our UK office to supply free charging to those who already have electric vehicles as well as to encourage others to convert to electric.

Solar roof-top installation – In August 2018 we commissioned a 30 kwh solar roof-top installation, generating approximately 23% of the electricity required to run the NEB UK office and warehouse. Estimated emissions avoided are 21 tonnes of CO₂ per year. The remainder of our power usage is 100% green electricity supplied by Ecotricity.



23%

of our electricity is generated by solar power at our Hitchin, UK subsidiary

Responsible Business Practices

It is our goal to continuously improve our business processes to minimize our impact on the environment.

The NEB Catalogue and Technical Reference:

Since 1975, our catalogue has been printed on Forest Stewardship Council® (FSC) certified, 30% post-consumer recycled paper, reducing the need for trees, decreasing energy consumption and saving landfill space. In collaboration with Universal Wilde, our 2015-2016 catalogue became the first CarbonNeutral®-certified catalogue produced in the United States.

For more information visit:

<http://www.universalwilde.com/environmental-stewardship>.

In addition to extensive scientific information, editions of our catalogue offer mini-reviews that address various environmental topics. With these articles, we hope to raise awareness about the impact we have on the environment and our need to act as stewards of the planet. With the release of each catalogue, NEB additionally pledges support to non-profit organizations that promote environmental awareness.

Product Packaging:

Excess packaging is one of the most wasteful uses of the Earth's resources. At NEB, we purposefully use minimal packaging materials for all of our products. Whenever possible, we use responsibly sourced and recyclable packaging.

Thoughtful Product Design:

The Monarch Microfuge Tube EcoRack is made from plastic recovered during the manufacture of Monarch nucleic acid purification columns. Plastic that would otherwise be discarded is recovered and re-molded into this lab accessory.

Printed Material and Mailings:

At our UK office we use 100% recycled, uncoated paper for all office use, delivery notes, invoices and marketing literature, whether printed in-house or at our print supplier. We print our quarterly newsletter and the majority of our brochures using vegetable-based or water-based ink. The newsletter is mailed without an envelope and other literature is mailed in 100% recycled and recyclable card envelopes.



Reduced lab waste



Significantly less plastic as compared to leading supplier
Monarch kits still deliver high yields, purity and performance



Buffer bottles
Carefully designed to minimize plastic usage



Thinner-walled columns
Reduction in total plastic without affecting performance



Flexible purchasing options



Buffers and columns sold separately
Purchase only what you need and avoid wasted materials



Same performance, design and formulations
Standalone products are the same components that are included in complete kits



No excessive packaging



Sturdy, reusable boxes at just the right size
Carefully designed to eliminate empty space, versatile Monarch boxes can be reused anywhere



Concise protocol cards replace printed manuals
Both cards and manuals are available online as PDFs



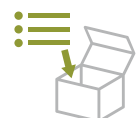
Sustainable & recyclable packaging



Sourced for recyclability
All components are purposefully sourced for recyclability



Recycled paper
Used to make the kit boxes, inserts and paper materials



Instructions for recycling kit components
Can be found on product packing or online



Eco-friendly printing
Printing of boxes and packaging powered by green sustainable sources such as wind



Ambient Temperature Shipments:

We now deliver 17% of product shipments at ambient temperature.¹ Ambient temperature shipping provides many environmental benefits such as reduced packaging and reduced fuel use. It removes the need for polystyrene (EPS) boxes, ice packs and the energy used in freezing them. For a list of products shipped at ambient temperature please visit www.neb.uk.com/ambient

Shipping Materials:

We continue to adapt our shipping packaging to become more sustainable. Steps taken include:

- Introduction of Eco-Boxes: over 30% of our shipments are sent in insulated cardboard boxes.² See page 31 for more details.
- Reduction in the size of our EPS shipping boxes: we still have to use EPS for some shipments but we use the smallest box possible for the majority (77%) of these shipments. Our small EPS box is constructed from 70% less polystyrene than our next biggest box.
- Use of paper envelopes: 10% of orders are shipped in Enviroflute envelopes (pictured left) at ambient temperature.³ The envelopes are 100% sustainably sourced paper and are fully recyclable.

Our moves to small shipment boxes and ambient shipments saved over 1.6 tonnes of plastic per year.⁴ Our subsequent move to Eco-Boxes for some shipments is saving 740 kg of plastic per year.⁵

Other packaging: Our cold shipment ice packs are made from recyclable plastic and water or water-based gel. We encourage customers to re-use the ice packs but they are also 100% recyclable. The gel degrades in sunlight and is perfect for garden irrigation. FedEx-branded shipping envelopes are carbon neutral. APC courier envelopes are made from recycled materials and are recyclable (#4 LDPE).

Electronic Ordering and Invoicing:

We invest significantly and work closely with our customers to implement electronic ordering. 99.6% of our invoices are sent electronically saving approx. 800kg of paper per year.⁶



¹ Data from Apr-Sep 2021; ^{2,3} Data from Oct-Nov 2021; ⁴ Data from 2017; ⁵ Data from 2021 ⁶ Data from 2018.

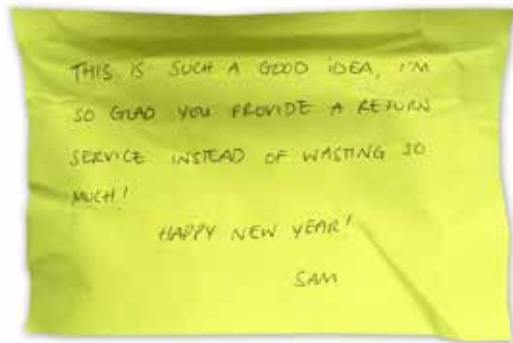
The NEB Shipping Box Recycling Programme

NEB operates the world's longest-running shipping box recycling programme, which diverts polystyrene from landfills. Established in 1976 in the US, it remains in practice today on a global scale. In the UK our customers send back around 20% of our polystyrene shipping boxes (data from March - October 2021). Of these, 96% are reused and 4% are recycled to make new materials for the building industry. We have been encouraging our customers to send back more of our 'happy' boxes and are delighted by the response.

Read more at www.neb.uk.com/box-recycling.

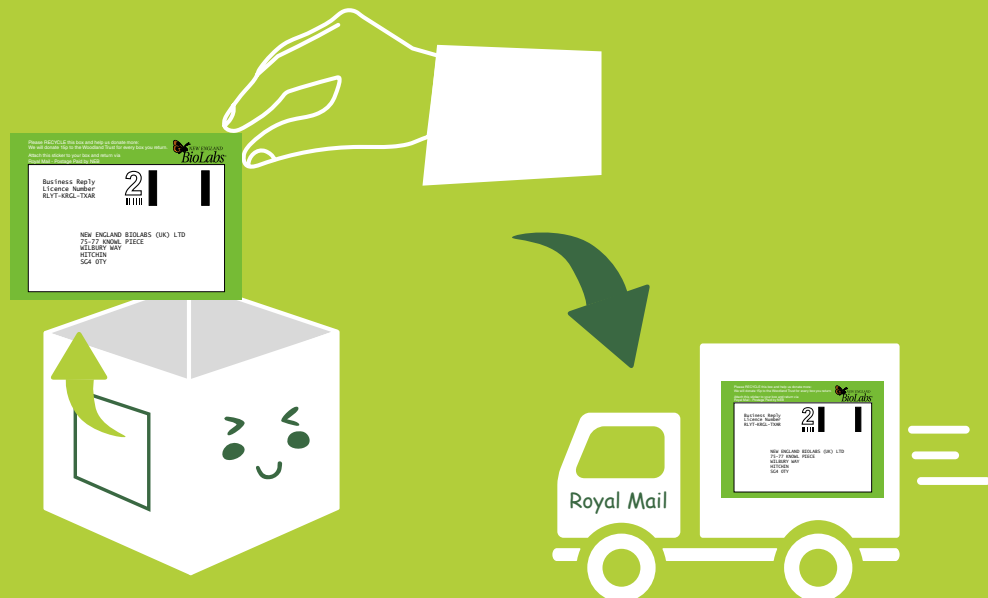
Find out more about expanded polystyrene sustainability at www.epsindustry.org/eps-sustainability.

Happy boxes make happy customers:



We REUSE NEB shipping boxes RETURNED by our CUSTOMERS

For every box that we receive back, this enables us to make a donation to the Woodland Trust.



Meet our Eco Shipping Boxes

NEB has always placed environmental stewardship as one of our highest priorities – one of our goals has been to continuously improve our business processes in order to minimize our impact on the environment.

Cold chain shipping has long been a challenge from an environmental standpoint. Many of our products require shipment on ice or dry ice, and maintaining proper shipping temperature conditions is critical. Expanded polystyrene (EPS) has always been the gold standard – it is light, durable, and well-known for its insulative properties. Unfortunately, EPS is difficult to recycle and often makes its way to landfills. To address this, we have maintained a shipping box recycling programme for over 40 years – customers simply use the free return label and send their shipping box back to NEB for re-use. In the meantime, we continued to look for alternative, more sustainable solutions.

Our Eco boxes, maintain the cold shipping temperature requirements needed to ship NEB products, but are either 100% recyclable (medium-sized box) or are recyclable with a compostable/biodegradable insert (large-sized box).

Q. How are the Eco-Boxes made?

A. We use two different sizes of Eco-Box. The larger Eco-Box is a cardboard outer carton containing an insulating insert made from hemp. The medium Eco-Box is a cardboard outer carton with a paper-based insert. Both inserts fit tightly inside the shipping boxes.

Q. How are the Eco-Boxes recycled?

A. Both boxes and the paper-based insert are 100% recyclable, in the cardboard recycling stream. The hemp insert is compostable or will biodegrade in the normal waste stream. Recycling instructions are printed on the boxes and you can find out more at www.neb.uk.com/eco-box.

Q. Do the Eco-Boxes keep product as cold as polystyrene shipping boxes?

A. Yes, both inserts were specifically designed for thermal protection. They were tested under varying shipping conditions and maintain proper temperature requirements for the delivery of NEB products.

Q. Does NEB still use polystyrene shipping boxes?

A. Until we identify additional solutions, NEB will still rely on polystyrene shipping boxes for a portion of our products, including those that require shipment on dry ice (e.g. competent cells), as well as larger shipments. We will maintain our Shipping Box Recycling Programme for any polystyrene shipping boxes in circulation. If you receive a polystyrene shipping box, you are welcome to use the free return label to send your box back to NEB, where we will arrange for its proper recycling.





Carbon Offsetting

We carbon offset all our printed marketing literature produced by our UK print supplier including the quarterly Expressions newsletter, technical brochures and shipping inserts. Our print supplier offers carbon offsetting in conjunction with Climate Partner who develop and promote projects to protect the climate around the globe.

We are currently supporting a project to protect the April Salumei tropical rainforest in Papua New Guinea and to support its indigenous people to continue living sustainably in this important ecosystem. The government of Papua New Guinea had previously approved the primeval forest of April Salumei for industrial use and deforestation, threatening the existence of the forest-dependant communities living there.

Forests, especially tropical ones, store CO₂. For projects aimed at combatting climate change, there are essentially three methods for creating and sustaining forestry as a carbon sink:

- forestation and reforestation
- sustainable forest management (where the amount of timber harvested does not exceed the amount that can grow back)
- financial incentives for the protection of forestland as a carbon sink (the UN's REDD+ program), whereby the project owner must ensure that tree cover is maintained

Today, the people of April Salumei protect a vast area of rainforest, thus maintaining an important CO₂ sink as well as protecting biodiversity: Papua New Guinea is home to 5 percent of global biodiversity. In addition to preserving 600,000 hectares of rainforest, saving 400,000 tons of CO₂ per year, the project brings other benefits for the people: the children go to school, learn to read, and have prospects for the future. Adults are able to find work in small businesses and anyone who falls ill can be treated in a community health centre. The project also provides affordable and clean energy: more than 1,000 solar lamps were distributed in schools, hospitals, churches and homes. For many people in this area it is the first time they have had electric light.

Find out more at www.climatepartner.com





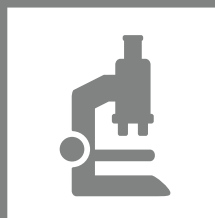
“For almost 30 years, I have been honored to be involved in catalog production. I love every aspect of its development, including choosing a nature-themed cover and artwork to go along with its environmentally-themed articles.”

WENDY, GRAPHIC DESIGNER AND NEB EMPLOYEE

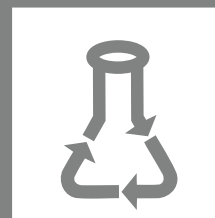
labconscious

Labconscious is an open resource website for scientists to share green lab initiatives to reduce lab waste, use green chemistry, conserve water and save energy.

labconscious.com



Raise awareness by sharing ideas, protocols, and best practices



Empower scientists to make changes at their bench, in their lab, and across their work space



Inspire scientists to join the movement and teach others



be INSPIRED
drive DISCOVERY
stay GENUINE

USA

New England Biolabs, Inc.
Telephone: (978) 927-5054
Toll Free: (U.S. Orders) 1-800-632-5227
Toll Free: (U.S. Tech) 1-800-632-7799
info@neb.com

United Kingdom

New England Biolabs (UK), Ltd.
Call Free 0800 318486
info.uk@neb.com

www.neb.uk.com



Products and content are covered by one or more patents, trademarks and/or copyrights owned or controlled by New England Biolabs, Inc. (NEB). The use of trademark symbols does not necessarily indicate that the name is trademarked in the country where it is being read; it indicates where the content was originally developed. See www.neb.com/trademarks. The use of these products may require you to obtain additional third-party intellectual property rights for certain applications. For more information, please email busdev@neb.com.

Your purchase, acceptance, and/or payment of and for NEB's products is pursuant to NEB's Terms of Sale at <http://www.neb.uk.com/terms-conditions>. NEB does not agree to and is not bound by any other terms or conditions, unless those terms and conditions have been expressly agreed to in writing by a duly authorized officer of NEB.

New England Biolabs is an ISO 9001, ISO 14001 and ISO 13485 certified facility.

© Copyright 2023, New England Biolabs, Inc.; all rights reserved. Please Recycle.

