

SNAP-Cell® 360



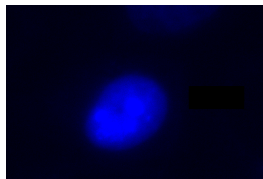
1-800-632-7799
info@neb.com
www.neb.com



S9101S 001140317031

S9101S

50 nmol Lot: 0011403
Store at: -20°C Exp: 3/17



Live CHO-K1 cells transiently transfected with pSNAP-H2B. Cells were labeled with SNAP-Cell 360 (bright blue) for 30 minutes.

Introduction

SNAP-Cell 360 is a blue fluorescent substrate that can be used to label SNAP-tag® fusion proteins inside living cells, on cell surfaces, or *in vitro*. This cell-permeable substrate (CP-360) is based on aminomethylcoumarin and is suitable for DAPI filter sets or appropriate blue lasers. It has an excitation maximum at 357 nm and an emission maximum at 437 nm. This package contains 50 nmol of CP-360 substrate, sufficient to make 10 ml of a 5 µM SNAP-tag fusion protein labeling solution.

The SNAP-tag is a novel tool for protein research, allowing the specific, covalent attachment of virtually any molecule to a protein of interest. The SNAP-tag is a small protein based on mammalian O⁶-alkylguanine-DNA-alkyltransferase (AGT). SNAP-tag substrates are derivatives of benzyl purines and benzyl pyrimidines. In the labeling reaction, the dye-substituted benzyl group of the substrate becomes covalently attached to the SNAP-tag.

There are two steps to using this system: sub-cloning and expression of the protein of interest as a SNAP-tag fusion, and labeling of the fusion with the SNAP-tag substrate of choice. Expression of SNAP-tag fusion proteins is described in the documentation supplied with SNAP-tag plasmids. The labeling of the fusion proteins with the SNAP-tag substrate is described below.

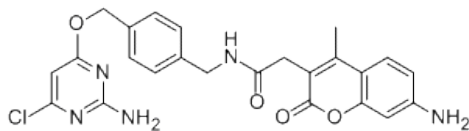


Figure 1. Structure of SNAP-Cell 360 (MW 479.9 g/mol).

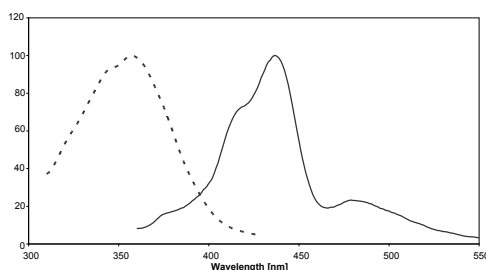


Figure 2. Excitation (dotted line) and emission spectra of SNAP-Cell 360 coupled to SNAP-tag in buffer at pH 7.5

Materials Required but not Supplied:

Cells expressing SNAP-tag fusion proteins
Tissue culture materials and media
Transfection reagents
Fluorescence microscope with suitable filter set
DMSO

Note: While the majority of SNAP-tag substrates are benzylguanine derivatives, the SNAP-tag is also able to recognize chloropyrimidine derivatives. SNAP-Cell 360 is one such example.

Storage

SNAP-Cell 360 should be stored at -20°C (long term) or at 4°C in the dark (short term, less than 4 weeks). Protect the substrate from light and moisture. With proper storage at -20°C the substrate should be stable for at least three years dry or 3 months dissolved in DMSO.

Quality Controls

Purity and Characterization: Purity of SNAP-Cell 360 was determined to be 93% by HPLC analysis. Molecular weight [M+H]⁺ was determined by MS to be 480.1 (480.1 expected).

In vitro protein labeling: Reaction of SNAP-Cell 360 (10 µM) with purified SNAP-tag protein (5 µM) *in vitro*, followed by mass spec analysis, indicated an efficiency of labeling of 82%.

Cellular Protein Labeling: Cells transfected with SNAP-tag vector expressing Histone H2B (intracellular) were labeled with 5 µM SNAP-Cell 360 for 30 minutes and visualized by confocal microscopy. Nuclear target was efficiently labeled.

Instructions for Cellular Labeling

SNAP-tag fusion proteins can be expressed by transient or by stable transfection. For expression of fusion proteins with the SNAP-tag, refer to instructions supplied with the SNAP-tag plasmids. For cell culture and transfection methods, refer to established protocols.

Dissolve one vial of SNAP-tag substrate (50 nmol) in 50 µl of DMSO to yield a labeling stock of 1 mM SNAP-tag substrate. Mix by vortexing for 10 minutes until all the SNAP-tag substrate is dissolved. Store this stock solution in the dark at 4°C, or for extended storage at -20°C. Different stock concentrations can be made, depending on your requirements. The substrate is soluble up to at least 10 mM.

Protocol for Labeling Reaction:

1. Dilute the labeling stock solution 1:200 in medium to yield a labeling medium of 5 µM dye substrate. Mix dye with medium thoroughly by pipetting up and down 10 times (necessary for reducing backgrounds). For best performance, add the SNAP-tag substrate to complete medium, including serum (0.5% BSA can be used for experiments carried out in serum-free media). Do not prepare more medium with SNAP-tag substrate than you will consume within one hour.
2. Replace the medium on the cells expressing a SNAP-tag fusion protein with the SNAP-tag labeling medium and incubate at 37°C, 5% CO₂ for 30 minutes.

Number of Wells in Plate	Recommended Volume for Cell Labeling
6	1 ml
12	500 µl
24	250 µl
48	100 µl
96	50 µl

3. Wash the cells three times with tissue culture medium with serum and incubate in fresh medium for 30 minutes. Replace the medium one more time to remove unreacted SNAP-tag substrate that has diffused out of the cells.
4. Image the cells using an appropriate filter set. SNAP-tag fusion proteins labeled with SNAP-Cell 360 should have an excitation maximum at 357 nm and an emission maximum at 437 nm, and can be imaged with DAPI filter sets.

We recommend routinely labeling one well of non-transfected or mock-transfected cells as a negative control.

Notes

Blocking Unreacted SNAP-tag with SNAP-Cell Block

In many cases the labeling of a non-transfected cell sample or a mock-transfected cell sample will be completely sufficient as a control. In some cases, however, it may be desirable to block the SNAP-tag activity in a cell sample expressing the SNAP-tag fusion protein to generate a control. This can be achieved using a nonfluorescent SNAP-Cell Block (bromothienylpteridine, BTP). SNAP-Cell Block may also be used in pulse-chase experiments to block the SNAP-tag reactivity during the chase between two pulse-labeling steps. A protocol for blocking is included with SNAP-Cell Block (NEB #S9106).

Optimizing Labeling

Optimal substrate concentrations and reaction times range from 1–10 µM and 15–60 minutes, respectively, depending on experimental conditions and expression levels of the SNAP-tag fusion protein. Best results are usually obtained at concentrations between 1 and 5 µM substrate and 30 minutes reaction time. Increasing substrate concentration and reaction time usually results in a higher background and does not necessarily increase the signal to background ratio.

Stability of Signal

The turnover rates of the SNAP-tag fusion protein under investigation may vary widely depending on the fusion partner. We have seen half-life values ranging from less than one hour to more than 12 hours. Where protein turnover is rapid, we recommend analyzing the cells under the microscope immediately after the labeling reaction or, if the application allows it, fixing the cells directly after labeling.

(see other side)

Fixation of Cells

After labeling the SNAP-tag fusion proteins, the cells can be fixed with standard fixation methods such as para-formaldehyde, ethanol, methanol, methanol/acetone etc., without loss of signal. We are not aware of any incompatibility of the SNAP-tag label with any fixation method.

Counterstaining

Cells can be counterstained with any live-cell dye that is compatible with the fluorescent properties of the SNAP-tag substrate for simultaneous microscopic detection. We recommend the use of DRAQ5™ (Biostatus Ltd) following manufacturer's instructions as a DNA counterstain for SNAP-Cell 360. Counterstaining of cells is also possible after fixation and permeabilization.

Note: Hoechst 33342 is incompatible with the fluorescent properties of SNAP-Cell 360.

Immunocytochemistry

Antibody labeling can be performed after SNAP-tag labeling and fixation of the cells according to standard protocols without loss of the SNAP-tag signal. The fixation conditions should be selected based on experience with the protein of interest. For example, some fixation methods destroy epitopes of certain proteins and therefore do not allow antibody staining afterwards.

Troubleshooting for Cellular Labeling

No Labeling

If no labeling is seen, the most likely explanation is that the fusion protein is not expressed. Verify your transfection method to confirm that the cells contain the fusion gene of interest. If this is confirmed, check for expression of the SNAP-tag fusion protein. If no antibody against the fusion partner is available, Anti-SNAP-tag Antibody (NEB #P9310) can be used. Alternatively, SNAP-Vista Green (NEB #S9147) can be used to confirm the presence of SNAP-tag fusion in cell extracts following SDS-PAGE, without the need for Western blotting.

Weak Labeling

Weak labeling may be caused by insufficient exposure of the fusion protein to the substrate. Try increasing the concentration of SNAP-tag substrate and/or the incubation time, following the guidelines described above. Alternatively, the protein may be poorly expressed and/or turn over rapidly. If the protein has limited stability in the cell, it may help to analyze the samples immediately after labeling.

High Background

Background fluorescence may be controlled by reducing the concentration of SNAP-tag substrate used and by shortening the incubation time. The presence of fetal calf serum or BSA during the labeling incubation should reduce non-specific binding of substrate to surfaces.

Signal Strongly Reduced After Short Time

If the fluorescence signal decreases rapidly, it may be due to instability of the fusion protein. The signal may be stabilized by fixing the cells. Alternatively, try switching the SNAP-tag from the N- to the C-terminus or vice versa.

Photobleaching is generally not a problem as the SNAP-Cell 360 substrate is very photostable. However, if you experience problems with photobleaching, addition of a commercially available anti-fade reagent may be helpful.

Instructions for Labeling of Proteins *in vitro*:

1. Dissolve the vial of SNAP-Cell 360 (50 nmol) in 50 µl of fresh DMSO to yield a labeling stock solution of 1 mM SNAP-tag substrate. Mix by vortexing for 10 minutes until all the SNAP-tag substrate is dissolved. Dilute this 1 mM stock solution 1:4 in fresh DMSO to yield a 250 µM stock for labeling proteins *in vitro*.
2. Set up the reactions, in order, as follows:

Component	Volume	Final Concentration
1X PBS	42 µl	1X
50 mM DTT	1 µl	1 mM
50 µM SNAP-tag Purified Protein	5 µl	5 µM
250 µM SNAP-tag Substrate	2 µl	10 µM
Total Volume	50 µl	

3. Incubate in the dark for 30 minutes at 37°C.
4. Run sample on an SDS-PAGE gel and detect using a fluorescent gel scanner or store samples at -20°C or -80°C in the dark.

Removal of Unreacted Substrate (Optional)

After the labeling reaction, the unreacted substrate can be separated from the labeled SNAP-tag fusion protein by gel filtration or dialysis. Please refer to the vendor's instructions for the separation tools you are using.

Notes for Labeling *in vitro*

We recommend the routine addition of 1 mM DTT to all buffers used for handling, labeling and storage of the SNAP-tag. The stability of the SNAP-tag is improved in the presence of reducing agents; however it can also be labeled in their absence, if handling at temperatures above 4°C is minimized.

SNAP-tag fusion proteins can be purified before labeling, but the labeling reaction also works in non-purified protein solutions (including cell lysates).

Troubleshooting for Labeling *in vitro*

Solubility

If solubility problems occur with your SNAP-tag fusion protein, we recommend testing a range of pH (pH 5.0–pH 10.0) and ionic strengths. The salt concentration may also need to be optimized for your particular fusion protein (50–250 mM).

Loss of Protein Due to Aggregation or Sticking to Tube

If stickiness of the fusion protein is a problem, we recommend adding Tween 20 at a final concentration of 0.05% to 0.1%. The SNAP-tag activity is not affected by this concentration of Tween 20.

Incomplete Labeling

If exhaustive labeling of a protein sample is not achieved using the recommended conditions, try the following protocol modifications: Increase the incubation time to two hours total at 25°C or to 24 hours at 4°C; or halve the volume of protein solution labeled. Both approaches may be combined. If you still have poor labeling results, we recommend checking the activity of the SNAP-tag using SNAP-Vista Green.

If the SNAP-tag fusion has been stored in the absence of DTT or other reducing agent, or has been stored at 4°C for a prolonged period, its activity may be compromised. Include 1 mM DTT in all solutions of the SNAP-tag fusion protein, and store the fusion protein at -20°C.

Using less than the recommended amount of substrate stock solution can significantly slow down the reaction rate.

Loss of Activity of Protein of Interest

If your fusion protein is particularly sensitive to degradation or to loss of activity, you can try reducing the labeling time or decreasing the labeling temperature. If you label at 4°C we recommend overnight incubation.



NEW ENGLAND BIOLABS®, SNAP-CELL® and SNAP-TAG® are registered trademarks owned by New England Biolabs, Inc.

DRAQ5™ is a trademark of Biostatus Ltd.

Notice to Buyer/User: The Buyer/User has a non-exclusive license to use this system or any component thereof for RESEARCH AND DEVELOPMENT ONLY. Commercial use of this system or any components thereof requires a license from New England Biolabs, Inc., 240 County Road, Ipswich, MA 01938. For detailed information: see www.neb.com/cia/legal. The products and/or their use may be covered by one or more of the following patents and patent applications:

7,939,284 (Methods for Using O⁶-Alkylguanine-DNA-Alkyltransferases)
7,888,090 (Mutants of O⁶-Alkylguanine-DNA-Alkyltransferases)
8,163,479 Specific Substrates for O⁶-Alkylguanine-DNA-Alkyltransferases)

8,178,314 (Pyrimidines Reacting With O⁶-Alkylguanine-DNA-Alkyltransferases)

PCT/EP2007/057597 (Labeling of Fusion Proteins with Synthetic Probes)

EP07117800 (Drug Delivery)

EP07117802 (Drug Delivery)

EP07120288 (GTPase-Transient Protein Protein Interactions)

These patents and patent applications are owned by Covalys, or owned by the Ecole Polytechnique Fédérale de Lausanne (EPFL) and exclusively licensed to Covalys and NEB