

**Anti-SNAP-tag<sup>®</sup>  
Antibody  
(Polyclonal)**



1-800-632-7799  
info@neb.com  
www.neb.com



P9310S 004130516051

**P9310S**

100 µl Lot: 0041305

Store at: -20°C Exp: 5/16

**Description:**

This rabbit polyclonal antibody was obtained from the immunization with purified recombinant SNAP-tag protein and affinity purified using SNAP-BG resin.

**Specificity:**

Tested by Western blot analysis of purified SNAP-tag and CLIP-tag proteins as well as mammalian cell lysates containing expressed SNAP-tag fusion proteins. Reacts with SNAP-tag and CLIP-tag proteins.

Application: Western blot, suggested working dilution: 1:1000.

**Storage:**

This antibody is supplied in 10 mM HEPES (pH 7.5), 150 mM NaCl, 100 µg/ml BSA and 50% glycerol. Store at -20°C for up to one year. Avoid repeated elevation in temperature.

**Notes:**

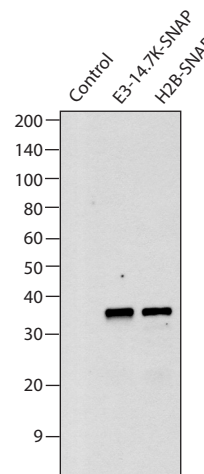
The optimal dilution for Western blotting may have to be experimentally determined to account for protein expression and assay conditions.

The sensitivity of detection is 5 ng of SNAP-tag per load in Western blotting.

This antibody has not been validated for other applications.

**Reference:**

1. Keppler, A. et al. (2003) Nature Biotechnol. 21, 86-89.



Western blot analysis of SNAP-tag fusion proteins expressed in mammalian cells. CHO-K1 cells were transfected with plasmids expressing histone protein H2B or adenoviral protein E3-14.7K fused to SNAP-tag. The cell lysates, each prepared from  $5 \times 10^3$  cells, were electrophoresed on a 10-20% Tris-glycine polyacrylamide gel under denaturing conditions. Western blot analysis was performed with anti-SNAP antibody in 1:1000 dilution and chemiluminescent detection. Control: untransfected cell lysate.

CERTIFICATE OF ANALYSIS

**Anti-SNAP-tag<sup>®</sup>  
Antibody  
(Polyclonal)**



1-800-632-7799  
info@neb.com  
www.neb.com



P9310S 004130516051

**P9310S**

100 µl Lot: 0041305

Store at: -20°C Exp: 5/16

**Description:**

This rabbit polyclonal antibody was obtained from the immunization with purified recombinant SNAP-tag protein and affinity purified using SNAP-BG resin.

**Specificity:**

Tested by Western blot analysis of purified SNAP-tag and CLIP-tag proteins as well as mammalian cell lysates containing expressed SNAP-tag fusion proteins. Reacts with SNAP-tag and CLIP-tag proteins.

Application: Western blot, suggested working dilution: 1:1000.

**Storage:**

This antibody is supplied in 10 mM HEPES (pH 7.5), 150 mM NaCl, 100 µg/ml BSA and 50% glycerol. Store at -20°C for up to one year. Avoid repeated elevation in temperature.

**Notes:**

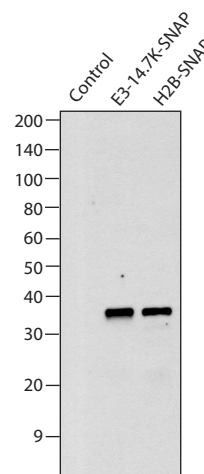
The optimal dilution for Western blotting may have to be experimentally determined to account for protein expression and assay conditions.

The sensitivity of detection is 5 ng of SNAP-tag per load in Western blotting.

This antibody has not been validated for other applications.

**Reference:**

1. Keppler, A. et al. (2003) Nature Biotechnol. 21, 86-89.



Western blot analysis of SNAP-tag fusion proteins expressed in mammalian cells. CHO-K1 cells were transfected with plasmids expressing histone protein H2B or adenoviral protein E3-14.7K fused to SNAP-tag. The cell lysates, each prepared from  $5 \times 10^3$  cells, were electrophoresed on a 10-20% Tris-glycine polyacrylamide gel under denaturing conditions. Western blot analysis was performed with anti-SNAP antibody in 1:1000 dilution and chemiluminescent detection. Control: untransfected cell lysate.

CERTIFICATE OF ANALYSIS