

## Endoproteinase GluC



1-800-632-7799  
info@neb.com  
www.neb.com



P8100S 004140215021

# P8100S



50 µg Lot: 0041402  
Store at -20°C Exp: 2/15

**Description:** Endoproteinase GluC (*Staphylococcus aureus* Protease V8) is a serine proteinase which selectively cleaves peptide bonds C-terminal to glutamic acid residues (1). Endoproteinase GluC also cleaves at aspartic acid residues at a rate 100–300 times slower than at glutamic acid residues (2,3).

**Source:** *Staphylococcus aureus* Protease V8 gene cloned and expressed in *Bacillus subtilis*

### Applications:

- Digestion of proteins for proteomic analysis by Mass Spectrometry
- Protein and peptide identification

**Reaction Conditions:** 1X GluC Reaction Buffer.  
Incubate at 37°C.

**Reagents Supplied with Enzyme:**  
2X GluC Reaction Buffer.

**1X GluC Reaction Buffer:**  
50 mM Tris-HCl  
0.5 mM Glu-Glu  
pH 8.0 @ 25°C

**Specific Activity:** 38.3 µmol/min/mg

**Molecular Weight:** 29849 daltons

**Reconstitution:** Endoproteinase GluC should be reconstituted by the addition of 50–500 µl of high purity water. Rapid autolysis is a function of enzyme concentration.

### Applications:

- Digestion of proteins for proteomic analysis by Mass Spectrometry
- Protein and peptide identification

**Reaction Conditions:** 1X GluC Reaction Buffer.  
Incubate at 37°C.

**Reagents Supplied with Enzyme:**  
2X GluC Reaction Buffer.

**1X GluC Reaction Buffer:**  
50 mM Tris-HCl  
0.5 mM Glu-Glu  
pH 8.0 @ 25°C

**Specific Activity:** 38.3 µmol/min/mg

**Molecular Weight:** 29849 daltons

**Reconstitution:** Endoproteinase GluC should be reconstituted by the addition of 50–500 µl of high purity water. Rapid autolysis is a function of enzyme concentration.

**Storage Conditions:** Supplied freeze-dried from a Tris-HCl and sodium chloride buffer.

Can be stored frozen in solution at -20°C for up to 2 weeks. A decrease in activity will occur if stored in solution. Use only freshly reconstituted protease for best results.

**Quality Assurance:** Endoproteinase GluC is free of glycerol and detergents which may interfere with Matrix-assisted laser desorption/ionization time-of-flight (MALDI-TOF) Mass Spectrometry (MS) or liquid chromatography (LC) methods.

### Quality Controls

**Endoproteinase GluC Activity:**  
Measured in three assays:

1. Protein digestion and analysis by MALDI-TOF MS
2. Peptide digestion and analysis by MALDI-TOF MS
3. Fluorometric substrate digestion and specific activity determination in digestion buffer: 50 mM Tris-HCl (pH 8.0) and 0.5 mM Glu-Glu.

### Protein Digestion: *Issatchenkia orientalis*

Cytochrome c (Swiss-Prot: CYC\_ISSOR) (Sigma) is subjected to digestion by GluC at a ratio of 20:1 respectively for 16 hours at 37°C in GluC Reaction

**Storage Conditions:** Supplied freeze-dried from a Tris-HCl and sodium chloride buffer.

Can be stored frozen in solution at -20°C for up to 2 weeks. A decrease in activity will occur if stored in solution. Use only freshly reconstituted protease for best results.

**Quality Assurance:** Endoproteinase GluC is free of glycerol and detergents which may interfere with Matrix-assisted laser desorption/ionization time-of-flight (MALDI-TOF) Mass Spectrometry (MS) or liquid chromatography (LC) methods.

### Quality Controls

**Endoproteinase GluC Activity:**  
Measured in three assays:

1. Protein digestion and analysis by MALDI-TOF MS
2. Peptide digestion and analysis by MALDI-TOF MS
3. Fluorometric substrate digestion and specific activity determination in digestion buffer: 50 mM Tris-HCl (pH 8.0) and 0.5 mM Glu-Glu.

### Protein Digestion: *Issatchenkia orientalis*

Cytochrome c (Swiss-Prot: CYC\_ISSOR) (Sigma) is subjected to digestion by GluC at a ratio of 20:1 respectively for 16 hours at 37°C in GluC Reaction

Buffer. 1 µl of the above reaction (50 ng) was mixed with 1 µl of α-cyano-4-hydroxycinnamic acid matrix solution, air-dried and subjected to MALDI-TOF MS analysis on an ABI Voyager DE MALDI-TOF MS.

**Peptide Digestion:** ACTH (1–17) peptide is subjected to digestion by GluC at a ratio of 20:1 respectively for 16 hours at 37°C in GluC Reaction Buffer. 1 µl of the above reaction (10 ng) was mixed with 1 µl of α-cyano-4-hydroxycinnamic acid matrix solution, air-dried and subjected to MALDI-TOF MS analysis.

**Fluorometric Assay:** 1 µg (~1 µmol) of Anthranilyl-Ala-Phe-Ala-Phe-Glu-Val-Phe(NO<sub>2</sub>)-Tyr-Asp peptide (Sigma) was suspended in 150 µl of GluC Reaction Buffer and 1 µg of Endoproteinase GluC was added (4). The initial rate was determined by measurement of the increase in fluorescence (excitation 330 nm and emission 450 nm). The protein concentration is determined by C18 reverse-phase HPLC and integration.

(see other side)

CERTIFICATE OF ANALYSIS

## Endoproteinase GluC



1-800-632-7799  
info@neb.com  
www.neb.com



P8100S 004140215021

# P8100S



50 µg Lot: 0041402  
Store at -20°C Exp: 2/15

**Description:** Endoproteinase GluC (*Staphylococcus aureus* Protease V8) is a serine proteinase which selectively cleaves peptide bonds C-terminal to glutamic acid residues (1). Endoproteinase GluC also cleaves at aspartic acid residues at a rate 100–300 times slower than at glutamic acid residues (2,3).

**Source:** *Staphylococcus aureus* Protease V8 gene cloned and expressed in *Bacillus subtilis*

### Applications:

- Digestion of proteins for proteomic analysis by Mass Spectrometry
- Protein and peptide identification

**Reaction Conditions:** 1X GluC Reaction Buffer.  
Incubate at 37°C.

**Reagents Supplied with Enzyme:**  
2X GluC Reaction Buffer.

**1X GluC Reaction Buffer:**  
50 mM Tris-HCl  
0.5 mM Glu-Glu  
pH 8.0 @ 25°C

**Specific Activity:** 38.3 µmol/min/mg

**Molecular Weight:** 29849 daltons

**Reconstitution:** Endoproteinase GluC should be reconstituted by the addition of 50–500 µl of high purity water. Rapid autolysis is a function of enzyme concentration.

**Storage Conditions:** Supplied freeze-dried from a Tris-HCl and sodium chloride buffer.

Can be stored frozen in solution at -20°C for up to 2 weeks. A decrease in activity will occur if stored in solution. Use only freshly reconstituted protease for best results.

**Quality Assurance:** Endoproteinase GluC is free of glycerol and detergents which may interfere with Matrix-assisted laser desorption/ionization time-of-flight (MALDI-TOF) Mass Spectrometry (MS) or liquid chromatography (LC) methods.

### Quality Controls

**Endoproteinase GluC Activity:**  
Measured in three assays:

1. Protein digestion and analysis by MALDI-TOF MS
2. Peptide digestion and analysis by MALDI-TOF MS
3. Fluorometric substrate digestion and specific activity determination in digestion buffer: 50 mM Tris-HCl (pH 8.0) and 0.5 mM Glu-Glu.

### Protein Digestion: *Issatchenkia orientalis*

Cytochrome c (Swiss-Prot: CYC\_ISSOR) (Sigma) is subjected to digestion by GluC at a ratio of 20:1 respectively for 16 hours at 37°C in GluC Reaction

Buffer. 1 µl of the above reaction (50 ng) was mixed with 1 µl of α-cyano-4-hydroxycinnamic acid matrix solution, air-dried and subjected to MALDI-TOF MS analysis on an ABI Voyager DE MALDI-TOF MS.

**Peptide Digestion:** ACTH (1–17) peptide is subjected to digestion by GluC at a ratio of 20:1 respectively for 16 hours at 37°C in GluC Reaction Buffer. 1 µl of the above reaction (10 ng) was mixed with 1 µl of α-cyano-4-hydroxycinnamic acid matrix solution, air-dried and subjected to MALDI-TOF MS analysis.

**Fluorometric Assay:** 1 µg (~1 µmol) of Anthranilyl-Ala-Phe-Ala-Phe-Glu-Val-Phe(NO<sub>2</sub>)-Tyr-Asp peptide (Sigma) was suspended in 150 µl of GluC Reaction Buffer and 1 µg of Endoproteinase GluC was added (4). The initial rate was determined by measurement of the increase in fluorescence (excitation 330 nm and emission 450 nm). The protein concentration is determined by C18 reverse-phase HPLC and integration.

(see other side)

CERTIFICATE OF ANALYSIS

### Endoproteinase GluC Protein Sequence:

1 VILPNNDRHQITD TTNGHYAPVTYIQVEAPTGT FIASGVVVGKDTLLTNKHVV DATHGDP  
61 HALKAFPSAINQD NYPNGGFTAEQITKYS GEGDLAIVK FSPNEQNKHIGEVV KPATMSNN  
121 AETQVNQNITVT GYPGDKPVATM WESK GKITYLKGEAM QYDLSTTGG NSGSPVFNEKNEV  
181 IGIHWGGVPNEF NGAVFINENVR NFLKQNIEDI HFANDDQPN NPDPNPNP DPNNPD  
241 EPNNPDNPNP DPNDGNNNSD NPDAAH HHHHHH

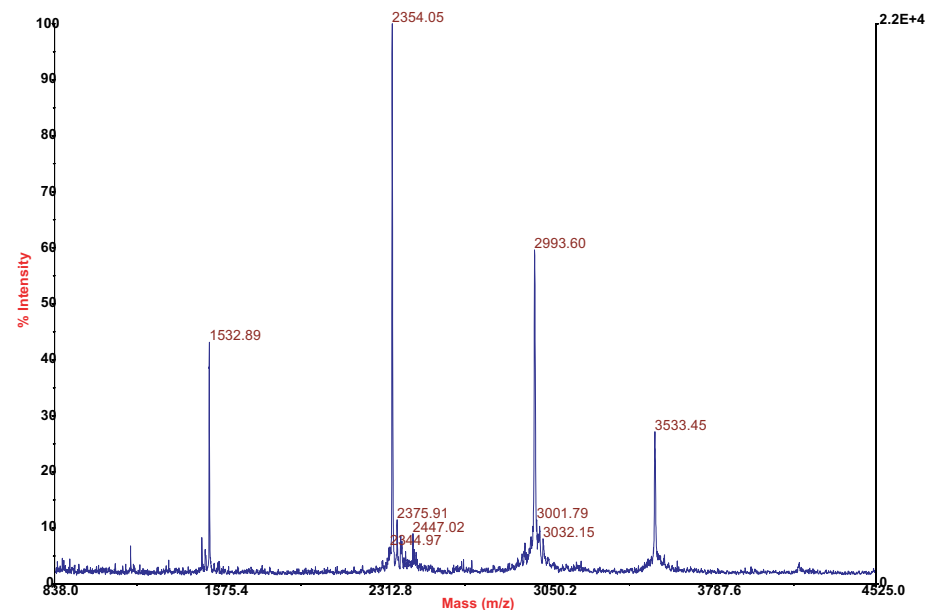
**Notes:** Glutamic acid residues are strongly favored by Endoproteinase GluC in all buffer conditions we have examined (Tris-HCl, ammonium bicarbonate and potassium phosphate) (2).

Endoproteinase GluC contains a 6-His-Tag on the C-terminal of the protein. The average protein appears as a single band on SDS-PAGE and a small amount of this protein may contain two extra Ala residues at the N-terminus of the protein (2). This sequence is also available at [www.neb.com](http://www.neb.com).

### References:

1. Drapeau G. R., Boily, Y. and Houmard, J. (1972). *J. Biol. Chem.* 247, 6720–6726.
2. Benner, J. S., Martin, D. and Schampel, A. K., unpublished results.
3. Birktoft J. J. and Breddam, K. (1994). In A. J. Barrett (Ed.), *Methods Enzymol.* Vol. 244, (pp.114–126) San Diego: Academic Press.
4. Breddam K. and Meldal, M. (1992). *Eur. J. Biochem.* 206, 103–107.

**MALDI-TOF MS:** *Issatchenkia orientalis* Cytochrome c subjected to digestion by Endoproteinase GluC for 16 hours, dried and subjected to MALDI-TOF MS.



### Endoproteinase GluC Protein Sequence:

1 VILPNNDRHQITD TTNGHYAPVTYIQVEAPTGT FIASGVVVGKDTLLTNKHVV DATHGDP  
61 HALKAFPSAINQD NYPNGGFTAEQITKYS GEGDLAIVK FSPNEQNKHIGEVV KPATMSNN  
121 AETQVNQNITVT GYPGDKPVATM WESK GKITYLKGEAM QYDLSTTGG NSGSPVFNEKNEV  
181 IGIHWGGVPNEF NGAVFINENVR NFLKQNIEDI HFANDDQPN NPDPNPNP DPNNPD  
241 EPNNPDNPNP DPNDGNNNSD NPDAAH HHHHHH

**Notes:** Glutamic acid residues are strongly favored by Endoproteinase GluC in all buffer conditions we have examined (Tris-HCl, ammonium bicarbonate and potassium phosphate) (2).

Endoproteinase GluC contains a 6-His-Tag on the C-terminal of the protein. The average protein appears as a single band on SDS-PAGE and a small amount of this protein may contain two extra Ala residues at the N-terminus of the protein (2). This sequence is also available at [www.neb.com](http://www.neb.com).

### References:

1. Drapeau G. R., Boily, Y. and Houmard, J. (1972). *J. Biol. Chem.* 247, 6720–6726.
2. Benner, J. S., Martin, D. and Schampel, A. K., unpublished results.
3. Birktoft J. J. and Breddam, K. (1994). In A. J. Barrett (Ed.), *Methods Enzymol.* Vol. 244, (pp.114–126) San Diego: Academic Press.
4. Breddam K. and Meldal, M. (1992). *Eur. J. Biochem.* 206, 103–107.

**MALDI-TOF MS:** *Issatchenkia orientalis* Cytochrome c subjected to digestion by Endoproteinase GluC for 16 hours, dried and subjected to MALDI-TOF MS.

