

**Biotinylated 2-Log  
DNA Ladder  
(0.1–10 kb)**



1-800-632-7799  
info@neb.com  
www.neb.com



N7554S 006130615061

**N7554S**

**25 µg Lot: 0061306 Exp: 6/15**  
**1,000 µg/ml Store at -20°C**

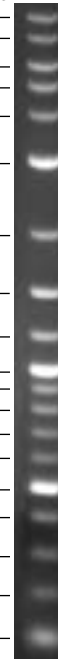
**Description:** A number of proprietary plasmids are digested to completion with appropriate restriction enzymes to yield 19 bands and subsequently biotinylated for use as molecular weight standards for chemiluminescent detection. All bands have equal intensity except for the 0.5, 1.0 and 3.0 kb bands which have increased intensity to serve as reference points.

Supplied in: 10 mM Tris-HCl (pH 8.0),  
1 mM EDTA.

The approximate mass of DNA in each of the bands in our 2-Log DNA Ladder is as follows (assuming a 1 µg loading):

Fragment	Base Pairs	DNA Mass
1	10,002	40 ng
2	8,001	40 ng
3	6,001	48 ng
4	5,001	40 ng
5	4,001	32 ng
6	<b>3,001</b>	<b>120 ng</b>
7	2,017	40 ng
8	1,517	57 ng
9	1,200	45 ng
10	<b>1,000</b>	<b>122 ng</b>
11	900	34 ng
12	800	31 ng
13	700	27 ng
14	600	23 ng
15a	<b>517</b>	<b>124 ng</b>
15b	<b>500</b>	
16	400	49 ng
17	300	37 ng
18	200	32 ng
19	100	61 ng

Mass (ng)	Kilobases
40	10.0
40	8.0
48	6.0
40	5.0
32	4.0
<b>120</b>	<b>3.0</b>
40	2.0
57	1.5
45	1.2
<b>122</b>	<b>1.0</b>
34	0.9
31	0.8
27	0.7
23	0.6
<b>124</b>	<b>0.5</b>
49	0.4
37	0.3
32	0.2
61	0.1



1.0 µg of Biotinylated 2-Log DNA Ladder visualized by ethidium bromide staining on a 1.0% TBE agarose gel.

**Note:** 1 µl of marker per gel lane is usually sufficient to view the DNA fragments using standard chemiluminescent detection.

CERTIFICATE OF ANALYSIS

**Biotinylated 2-Log  
DNA Ladder  
(0.1–10 kb)**



1-800-632-7799  
info@neb.com  
www.neb.com



N7554S 006130615061

**N7554S**

**25 µg Lot: 0061306 Exp: 6/15**  
**1,000 µg/ml Store at -20°C**

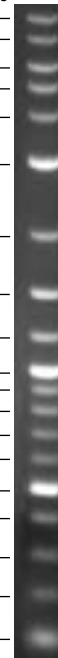
**Description:** A number of proprietary plasmids are digested to completion with appropriate restriction enzymes to yield 19 bands and subsequently biotinylated for use as molecular weight standards for chemiluminescent detection. All bands have equal intensity except for the 0.5, 1.0 and 3.0 kb bands which have increased intensity to serve as reference points.

Supplied in: 10 mM Tris-HCl (pH 8.0),  
1 mM EDTA.

The approximate mass of DNA in each of the bands in our 2-Log DNA Ladder is as follows (assuming a 1 µg loading):

Fragment	Base Pairs	DNA Mass
1	10,002	40 ng
2	8,001	40 ng
3	6,001	48 ng
4	5,001	40 ng
5	4,001	32 ng
6	<b>3,001</b>	<b>120 ng</b>
7	2,017	40 ng
8	1,517	57 ng
9	1,200	45 ng
10	<b>1,000</b>	<b>122 ng</b>
11	900	34 ng
12	800	31 ng
13	700	27 ng
14	600	23 ng
15a	<b>517</b>	<b>124 ng</b>
15b	<b>500</b>	
16	400	49 ng
17	300	37 ng
18	200	32 ng
19	100	61 ng

Mass (ng)	Kilobases
40	10.0
40	8.0
48	6.0
40	5.0
32	4.0
<b>120</b>	<b>3.0</b>
40	2.0
57	1.5
45	1.2
<b>122</b>	<b>1.0</b>
34	0.9
31	0.8
27	0.7
23	0.6
<b>124</b>	<b>0.5</b>
49	0.4
37	0.3
32	0.2
61	0.1



1.0 µg of Biotinylated 2-Log DNA Ladder visualized by ethidium bromide staining on a 1.0% TBE agarose gel.

**Note:** 1 µl of marker per gel lane is usually sufficient to view the DNA fragments using standard chemiluminescent detection.

CERTIFICATE OF ANALYSIS