

# Reverse Mass DNA Ladder



1-800-632-7799  
info@neb.com  
www.neb.com



N3240S 001120814082

## N3240S

50–200 gel lanes (1 ml) Lot: 0011208

Exp: 8/14 50 µg/ml Store at 4°C

1.5 ml Gel Loading Dye, Orange (6X)

Store at 25°C

**Description:** The Reverse Mass DNA ladder is a pre-mixed, ready-to-load molecular weight marker containing Orange G dye as a tracking dye.

The DNA Ladder consists of proprietary plasmids, which are digested to completion with appropriate restriction enzymes to yield 7 bands suitable for size determination and mass quantification of linear double-stranded DNA fragments. The

digested DNA includes fragments ranging from 0.5 to 10 kilobases.

Supplied in: 2.5% Ficoll-400, 11 mM EDTA, 3.3 mM Tris-HCl (pH 8.0 at 25°C), 0.017% SDS and 0.15% Orange G.

### Reagents supplied:

6X Gel Loading Dye, Orange

### 1X Gel Loading Dye, Orange:

2.5% Ficoll-400  
11 mM EDTA  
3.3 mM Tris-HCl (pH 8.0@25°C)  
0.017% SDS  
0.015% Orange G

**Preparation:** The double-stranded DNA is digested to completion with appropriate restriction enzymes, phenol extracted and equilibrated in storage buffer.

**Usage Recommendation:** We recommend loading 5 to 20 µl (0.25 µg to 1 µg) of the Reverse Mass DNA Ladder per gel lane. For a more accurate mass estimation, always compare the samples intensity to the ladder's band of nearest size. The loading volume and the loading buffer for the samples and the Reverse Mass DNA Ladder should be the same whenever possible.

The amount of DNA in each of the bands in our Mass DNA Ladder is indicated for the different loads:

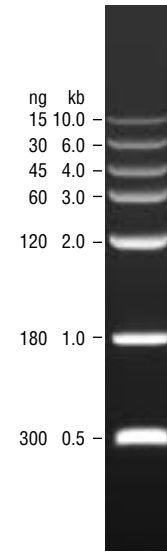
Fragment	Kilobases	ng/5 µl	ng/10 µl	ng/15 µl	ng/20 µl
1	10.0	5	10	15	20
2	6.0	10	20	30	40
3	4.0	15	30	45	60
4	3.0	20	40	60	80
5	2.0	40	80	120	160
6	1.0	60	120	180	240
7	0.5	100	200	300	400

**Notes:** Mass DNA Ladder is stable for at least 6 months at 25°C.

For long term storage. Store at 4°C or –20°C. If stored at –20°C, mix well after thawing.

### Reference:

1. Sambrook, J., Fritsch, E. F. and Maniatis, T. (1989). *Molecular Cloning: A Laboratory Manual*, (2nd ed.), (pp. 10.51–10.67). Cold Spring Harbor: Cold Spring Harbor Laboratory Press.



Reverse Mass DNA Ladder  
Mass values are for  
0.75 µg/lane.

CERTIFICATE OF ANALYSIS

# Reverse Mass DNA Ladder



1-800-632-7799  
info@neb.com  
www.neb.com



N3240S 001120814082

## N3240S

50–200 gel lanes (1 ml) Lot: 0011208

Exp: 8/14 50 µg/ml Store at 4°C

1.5 ml Gel Loading Dye, Orange (6X)

Store at 25°C

**Description:** The Reverse Mass DNA ladder is a pre-mixed, ready-to-load molecular weight marker containing Orange G dye as a tracking dye.

The DNA Ladder consists of proprietary plasmids, which are digested to completion with appropriate restriction enzymes to yield 7 bands suitable for size determination and mass quantification of linear double-stranded DNA fragments. The

digested DNA includes fragments ranging from 0.5 to 10 kilobases.

Supplied in: 2.5% Ficoll-400, 11 mM EDTA, 3.3 mM Tris-HCl (pH 8.0 at 25°C), 0.017% SDS and 0.15% Orange G.

### Reagents supplied:

6X Gel Loading Dye, Orange

### 1X Gel Loading Dye, Orange:

2.5% Ficoll-400  
11 mM EDTA  
3.3 mM Tris-HCl (pH 8.0@25°C)  
0.017% SDS  
0.015% Orange G

**Preparation:** The double-stranded DNA is digested to completion with appropriate restriction enzymes, phenol extracted and equilibrated in storage buffer.

**Usage Recommendation:** We recommend loading 5 to 20 µl (0.25 µg to 1 µg) of the Reverse Mass DNA Ladder per gel lane. For a more accurate mass estimation, always compare the samples intensity to the ladder's band of nearest size. The loading volume and the loading buffer for the samples and the Reverse Mass DNA Ladder should be the same whenever possible.

The amount of DNA in each of the bands in our Mass DNA Ladder is indicated for the different loads:

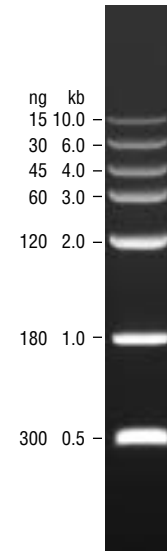
Fragment	Kilobases	ng/5 µl	ng/10 µl	ng/15 µl	ng/20 µl
1	10.0	5	10	15	20
2	6.0	10	20	30	40
3	4.0	15	30	45	60
4	3.0	20	40	60	80
5	2.0	40	80	120	160
6	1.0	60	120	180	240
7	0.5	100	200	300	400

**Notes:** Mass DNA Ladder is stable for at least 6 months at 25°C.

For long term storage. Store at 4°C or –20°C. If stored at –20°C, mix well after thawing.

### Reference:

1. Sambrook, J., Fritsch, E. F. and Maniatis, T. (1989). *Molecular Cloning: A Laboratory Manual*, (2nd ed.), (pp. 10.51–10.67). Cold Spring Harbor: Cold Spring Harbor Laboratory Press.



Reverse Mass DNA Ladder  
Mass values are for  
0.75 µg/lane.

CERTIFICATE OF ANALYSIS