

# pBR322 DNA- MspI Digest



1-800-632-7799  
info@neb.com  
www.neb.com



N3032S 153130815081

## N3032S

50 gel lanes (50 µg) Lot: 1531308 Exp: 8/15  
1,000 µg/ml Store at -20°C

1.5 ml Gel Loading  
Dye, Blue (6X) Store at 25°C

**Description:** The MspI digest of pBR322 DNA yields 26 fragments.

Supplied in: 10 mM Tris-HCl (pH 8.0), 1 mM EDTA.

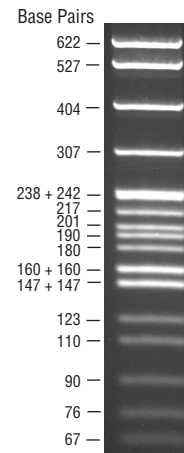
**Reagents supplied:**  
6X Gel Loading Dye, Blue

### 1X Gel Loading Dye, Blue:

2.5% Ficoll-400  
11 mM EDTA  
3.3 mM Tris-HCl (pH 8.0@25°C)  
0.017% SDS  
0.015% bromophenol blue

**Preparation:** Prepared from *E. coli* ER2420 (dam<sup>+</sup> dcm<sup>+</sup> EcoKM<sup>-</sup>) by a standard plasmid purification procedure, the double-stranded DNA is digested to completion with MspI, phenol extracted and equilibrated to 10 mM Tris-HCl (pH 8.0) and 1 mM EDTA.

**Usage Recommendation:** The approximate mass of DNA in each of the bands in our pBR322 DNA- MspI Digest is as follows (assuming a 1.0 µg loading):



*pBR322 DNA-MspI Digest  
visualized by ethidium  
bromide staining. 1.8%  
agarose gel*

Fragment	Base Pairs	DNA Mass
1	622	143 ng
2	527	121 ng
3	404	93 ng
4	307	70 ng
5	242	55 ng
6	238	55 ng
7	217	50 ng
8	201	46 ng
9	190	44 ng
10	180	41 ng
11, 12	160	74 ng
13, 14	147	68 ng
15	123	28 ng
16	110	25 ng
17	90	21 ng
18	76	17 ng
19	67	15 ng
20, 21	34	16 ng
22, 23	26	12 ng
24	15	3 ng
25, 26	9	4 ng

(see other side)

CERTIFICATE OF ANALYSIS

# pBR322 DNA- MspI Digest



1-800-632-7799  
info@neb.com  
www.neb.com



N3032S 153130815081

## N3032S

50 gel lanes (50 µg) Lot: 1531308 Exp: 8/15  
1,000 µg/ml Store at -20°C

1.5 ml Gel Loading  
Dye, Blue (6X) Store at 25°C

**Description:** The MspI digest of pBR322 DNA yields 26 fragments.

Supplied in: 10 mM Tris-HCl (pH 8.0), 1 mM EDTA.

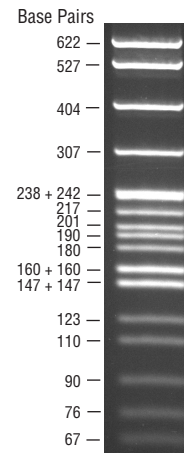
**Reagents supplied:**  
6X Gel Loading Dye, Blue

### 1X Gel Loading Dye, Blue:

2.5% Ficoll-400  
11 mM EDTA  
3.3 mM Tris-HCl (pH 8.0@25°C)  
0.017% SDS  
0.015% bromophenol blue

**Preparation:** Prepared from *E. coli* ER2420 (dam<sup>+</sup> dcm<sup>+</sup> EcoKM<sup>-</sup>) by a standard plasmid purification procedure, the double-stranded DNA is digested to completion with MspI, phenol extracted and equilibrated to 10 mM Tris-HCl (pH 8.0) and 1 mM EDTA.

**Usage Recommendation:** The approximate mass of DNA in each of the bands in our pBR322 DNA- MspI Digest is as follows (assuming a 1.0 µg loading):



*pBR322 DNA-MspI Digest  
visualized by ethidium  
bromide staining. 1.8%  
agarose gel*

Fragment	Base Pairs	DNA Mass
1	622	143 ng
2	527	121 ng
3	404	93 ng
4	307	70 ng
5	242	55 ng
6	238	55 ng
7	217	50 ng
8	201	46 ng
9	190	44 ng
10	180	41 ng
11, 12	160	74 ng
13, 14	147	68 ng
15	123	28 ng
16	110	25 ng
17	90	21 ng
18	76	17 ng
19	67	15 ng
20, 21	34	16 ng
22, 23	26	12 ng
24	15	3 ng
25, 26	9	4 ng

(see other side)

CERTIFICATE OF ANALYSIS