

# Quick-Load® 50 bp DNA Ladder



1-800-632-7799  
info@neb.com  
www.neb.com



**N0473S**

125-250 gel lanes (1.25 ml) Lot: 0041209  
100 µg/ml Store at 4°C Exp: 9/14

**Description:** Quick-Load® 50 bp DNA Ladder is a pre-mixed, ready-to-load molecular weight marker containing bromophenol blue as a tracking dye.

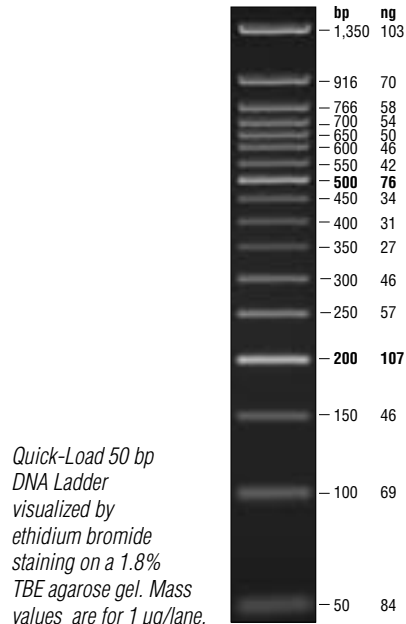
The DNA Ladder consists of proprietary plasmids which are digested to completion with appropriate restriction enzymes to yield 17 bands suitable for use as molecular weight standards for agarose gel electrophoresis. The digested DNA includes

**Ready-to-load, Stable at 25°C**

fragments ranging from 50–1,350 base pairs. The 200 and 500 base pair bands have increased intensity to serve as reference points.

Supplied in: 2.5% Ficoll-400, 11 mM EDTA, 3.3 mM Tris-HCl (pH 8.0 @ 25°C), 0.017% SDS and 0.015% bromophenol blue.

**Usage Recommendation: We recommend loading 5–10 µl (0.5–1.0 µg) of Quick-Load 50 bp DNA Ladder per gel lane.** The Quick-Load 50 bp DNA Ladder is not intended for precise quantification of DNA mass but can be used for approximating the mass of DNA in comparably intense samples of similar size. The approximate mass of DNA in each of the bands in our Quick-Load 50 bp DNA Ladder is indicated assuming a 10 µl (1.0 µg) load.



Quick-Load 50 bp DNA Ladder visualized by ethidium bromide staining on a 1.8% TBE agarose gel. Mass values are for 1 µg/lane.

Fragment	Base Pairs	DNA Mass
1	1,350	103 ng
2	916	70 ng
3	766	58 ng
4	700	54 ng
5	650	50 ng
6	600	46 ng
7	550	42 ng
8	<b>500</b>	<b>76 ng</b>
9	450	34 ng
10	400	31 ng
11	350	27 ng
12	300	46 ng
13	250	57 ng
14	<b>200</b>	<b>107 ng</b>
15	150	46 ng
16	100	69 ng
17	50	84 ng

(see other side)

CERTIFICATE OF ANALYSIS

# Quick-Load® 50 bp DNA Ladder



1-800-632-7799  
info@neb.com  
www.neb.com



**N0473S**

125-250 gel lanes (1.25 ml) Lot: 0041209  
100 µg/ml Store at 4°C Exp: 9/14

**Description:** Quick-Load® 50 bp DNA Ladder is a pre-mixed, ready-to-load molecular weight marker containing bromophenol blue as a tracking dye.

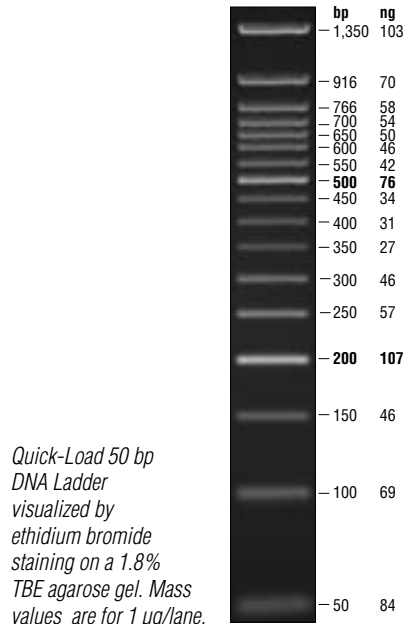
The DNA Ladder consists of proprietary plasmids which are digested to completion with appropriate restriction enzymes to yield 17 bands suitable for use as molecular weight standards for agarose gel electrophoresis. The digested DNA includes

**Ready-to-load, Stable at 25°C**

fragments ranging from 50–1,350 base pairs. The 200 and 500 base pair bands have increased intensity to serve as reference points.

Supplied in: 2.5% Ficoll-400, 11 mM EDTA, 3.3 mM Tris-HCl (pH 8.0 @ 25°C), 0.017% SDS and 0.015% bromophenol blue.

**Usage Recommendation: We recommend loading 5–10 µl (0.5–1.0 µg) of Quick-Load 50 bp DNA Ladder per gel lane.** The Quick-Load 50 bp DNA Ladder is not intended for precise quantification of DNA mass but can be used for approximating the mass of DNA in comparably intense samples of similar size. The approximate mass of DNA in each of the bands in our Quick-Load 50 bp DNA Ladder is indicated assuming a 10 µl (1.0 µg) load.



Quick-Load 50 bp DNA Ladder visualized by ethidium bromide staining on a 1.8% TBE agarose gel. Mass values are for 1 µg/lane.

Fragment	Base Pairs	DNA Mass
1	1,350	103 ng
2	916	70 ng
3	766	58 ng
4	700	54 ng
5	650	50 ng
6	600	46 ng
7	550	42 ng
8	<b>500</b>	<b>76 ng</b>
9	450	34 ng
10	400	31 ng
11	350	27 ng
12	300	46 ng
13	250	57 ng
14	<b>200</b>	<b>107 ng</b>
15	150	46 ng
16	100	69 ng
17	50	84 ng

(see other side)

CERTIFICATE OF ANALYSIS

**Preparation of DNA:** The double-stranded DNA is digested to completion with appropriate restriction enzymes, phenol extracted and equilibrated in storage buffer.

**Notes:**

Quick-Load 50 bp DNA Ladder is stable for at least 6 months at 25°C.

For long term storage, store at 4°C or –20°C. If stored at –20°C, mix well after thawing.

**Reference:** Sambrook, J., Fritsch, E. F. and Maniatis, T. (1989). *Molecular Cloning: A Laboratory Manual*, (2nd ed.), (pp. 10.51–10.67). Cold Spring Harbor: Cold Spring Harbor Laboratory Press.

**Preparation of DNA:** The double-stranded DNA is digested to completion with appropriate restriction enzymes, phenol extracted and equilibrated in storage buffer.

**Notes:**

Quick-Load 50 bp DNA Ladder is stable for at least 6 months at 25°C.

For long term storage, store at 4°C or –20°C. If stored at –20°C, mix well after thawing.

**Reference:** Sambrook, J., Fritsch, E. F. and Maniatis, T. (1989). *Molecular Cloning: A Laboratory Manual*, (2nd ed.), (pp. 10.51–10.67). Cold Spring Harbor: Cold Spring Harbor Laboratory Press.