

**Quick-Load®
2-Log DNA Ladder
(0.1–10.0 kb)**



1-800-632-7799
info@neb.com
www.neb.com



N0469S 019130215021

N0469S

125-250 gel lanes (1.25 ml) Lot: 0191302
100 µg/ml Store at 4°C Exp: 2/15

Description: Quick-Load® 2-Log DNA Ladder is a pre-mixed, ready-to-load molecular weight marker containing bromophenol blue as a tracking dye.

The DNA Ladder consists of proprietary plasmids which are digested to completion with appropriate restriction enzymes to yield 19 bands suitable for use as molecular weight standards for agarose gel electrophoresis. This digested DNA includes fragments ranging from 100 bp to 10 kb. The 0.5,

Ready-to-load, Stable at 25°C

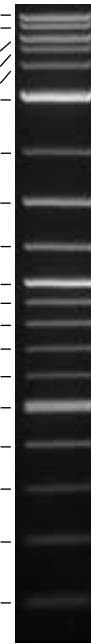
1.0 and 3.0 kb bands have increased intensity to serve as reference bands.

Supplied in: 2.5% Ficoll-400, 11 mM EDTA, 3.3 mM Tris-HCl (pH 8.0 @ 25°C), 0.017% SDS and 0.015% bromophenol blue.

Usage Recommendation: We recommend loading 5–10 µl (0.5–1.0 µg) of Quick-Load 2-Log DNA Ladder per gel lane. The Quick-Load 2-Log DNA Ladder is not intended for precise quantification of DNA mass but can be used for approximating the mass of DNA in comparably intense samples of similar size. The approximate mass of DNA in each of the bands in our Quick-Load 2-Log DNA Ladder is indicated assuming a 10 µl (1.0 µg) load.

Mass (ng)	Kilobases
40	10.0
40	8.0
48	6.0
40	5.0
32	4.0
120	3.0

40	2.0
57	1.5
45	1.2
122	1.0
34	0.9
31	0.8
27	0.7
23	0.6
124	0.5
49	0.4
37	0.3
32	0.2
61	0.1



Quick-Load 2-Log DNA Ladder visualized by ethidium bromide staining on a 1.0% TBE agarose gel. Mass values are for 1 µg/lane.

Fragment	Base Pairs	DNA Mass
1	10,002	40 ng
2	8,001	40 ng
3	6,001	48 ng
4	5,001	40 ng
5	4,001	32 ng
6	3,001	120 ng
7	2,017	40 ng
8	1,517	57 ng
9	1,200	45 ng
10	1,000	122 ng
11	900	34 ng
12	800	31 ng
13	700	27 ng
14	600	23 ng
15a	517	124 ng
15b	500	
16	400	49 ng
17	300	37 ng
18	200	32 ng
19	100	61 ng

(see other side)

CERTIFICATE OF ANALYSIS

**Quick-Load®
2-Log DNA Ladder
(0.1–10.0 kb)**



1-800-632-7799
info@neb.com
www.neb.com



N0469S 019130215021

N0469S

125-250 gel lanes (1.25 ml) Lot: 0191302
100 µg/ml Store at 4°C Exp: 2/15

Description: Quick-Load® 2-Log DNA Ladder is a pre-mixed, ready-to-load molecular weight marker containing bromophenol blue as a tracking dye.

The DNA Ladder consists of proprietary plasmids which are digested to completion with appropriate restriction enzymes to yield 19 bands suitable for use as molecular weight standards for agarose gel electrophoresis. This digested DNA includes fragments ranging from 100 bp to 10 kb. The 0.5,

Ready-to-load, Stable at 25°C

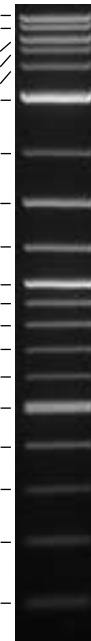
1.0 and 3.0 kb bands have increased intensity to serve as reference bands.

Supplied in: 2.5% Ficoll-400, 11 mM EDTA, 3.3 mM Tris-HCl (pH 8.0 @ 25°C), 0.017% SDS and 0.015% bromophenol blue.

Usage Recommendation: We recommend loading 5–10 µl (0.5–1.0 µg) of Quick-Load 2-Log DNA Ladder per gel lane. The Quick-Load 2-Log DNA Ladder is not intended for precise quantification of DNA mass but can be used for approximating the mass of DNA in comparably intense samples of similar size. The approximate mass of DNA in each of the bands in our Quick-Load 2-Log DNA Ladder is indicated assuming a 10 µl (1.0 µg) load.

Mass (ng)	Kilobases
40	10.0
40	8.0
48	6.0
40	5.0
32	4.0
120	3.0

40	2.0
57	1.5
45	1.2
122	1.0
34	0.9
31	0.8
27	0.7
23	0.6
124	0.5
49	0.4
37	0.3
32	0.2
61	0.1



Quick-Load 2-Log DNA Ladder visualized by ethidium bromide staining on a 1.0% TBE agarose gel. Mass values are for 1 µg/lane.

Fragment	Base Pairs	DNA Mass
1	10,002	40 ng
2	8,001	40 ng
3	6,001	48 ng
4	5,001	40 ng
5	4,001	32 ng
6	3,001	120 ng
7	2,017	40 ng
8	1,517	57 ng
9	1,200	45 ng
10	1,000	122 ng
11	900	34 ng
12	800	31 ng
13	700	27 ng
14	600	23 ng
15a	517	124 ng
15b	500	
16	400	49 ng
17	300	37 ng
18	200	32 ng
19	100	61 ng

(see other side)

CERTIFICATE OF ANALYSIS

Preparation of DNA: The double-stranded DNA is digested to completion with appropriate restriction enzymes, phenol extracted and equilibrated in storage buffer.

Notes:

Quick-Load 2-Log DNA Ladder is stable for at least 6 months at 25°C.

For long term storage, store at 4°C or –20°C. If stored at –20°C, mix well after thawing.

Reference: Sambrook, J., Fritsch, E. F. and Maniatis, T. (1989). *Molecular Cloning: A Laboratory Manual*, (2nd ed.), (pp. 10.51–10.67). Cold Spring Harbor: Cold Spring Harbor Laboratory Press.

Page 2 (N0469)

Preparation of DNA: The double-stranded DNA is digested to completion with appropriate restriction enzymes, phenol extracted and equilibrated in storage buffer.

Notes:

Quick-Load 2-Log DNA Ladder is stable for at least 6 months at 25°C.

For long term storage, store at 4°C or –20°C. If stored at –20°C, mix well after thawing.

Reference: Sambrook, J., Fritsch, E. F. and Maniatis, T. (1989). *Molecular Cloning: A Laboratory Manual*, (2nd ed.), (pp. 10.51–10.67). Cold Spring Harbor: Cold Spring Harbor Laboratory Press.

Page 2 (N0469)