

Quick-Load[®] 1 kb DNA Ladder



N0468S

125 gel lanes (1.25 ml) Lot: 0401302
50 µg/ml Store at 4°C Exp: 2/15

Description: Quick-Load[®] 1 kb DNA Ladder is a pre-mixed, ready-to-load molecular weight marker containing bromophenol blue as a tracking dye.

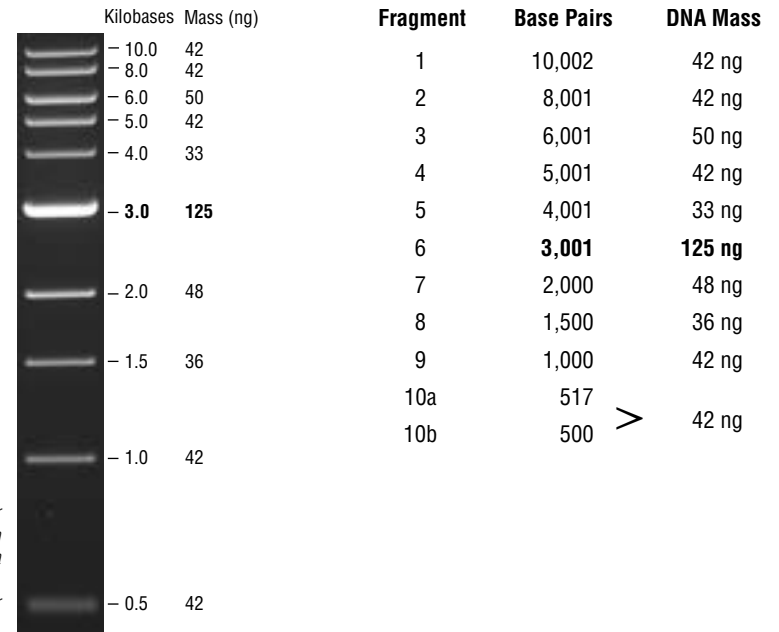
The DNA Ladder consists of proprietary plasmids which are digested to completion with appropriate restriction enzymes to yield 10 bands suitable for use as molecular weight standards for agarose gel electrophoresis. The digested DNA includes

Ready-to-load, Stable at 25°C

fragments ranging from 0.5–10.0 kilobases. The 3.0 kb fragment has increased intensity to serve as reference bands.

Supplied in: 2.5% Ficoll-400, 11 mM EDTA, 3.3 mM Tris-HCl (pH 8.0 @ 25°C), 0.017% SDS and 0.015% bromophenol blue.

Usage Recommendation: We recommend loading 10 µl (0.5 µg) of Quick-Load 1 kb DNA Ladder per gel lane. The Quick-Load 1 kb DNA Ladder is not intended for precise quantification of DNA mass but can be used for approximating the mass of DNA in comparably intense samples of similar size. The approximate mass of DNA in each of the bands in our Quick-Load 1 kb DNA Ladder is indicated assuming a 10 µl (0.5 µg) load.



(see other side)

CERTIFICATE OF ANALYSIS

Quick-Load[®] 1 kb DNA Ladder



N0468S

125 gel lanes (1.25 ml) Lot: 0401302
50 µg/ml Store at 4°C Exp: 2/15

Description: Quick-Load[®] 1 kb DNA Ladder is a pre-mixed, ready-to-load molecular weight marker containing bromophenol blue as a tracking dye.

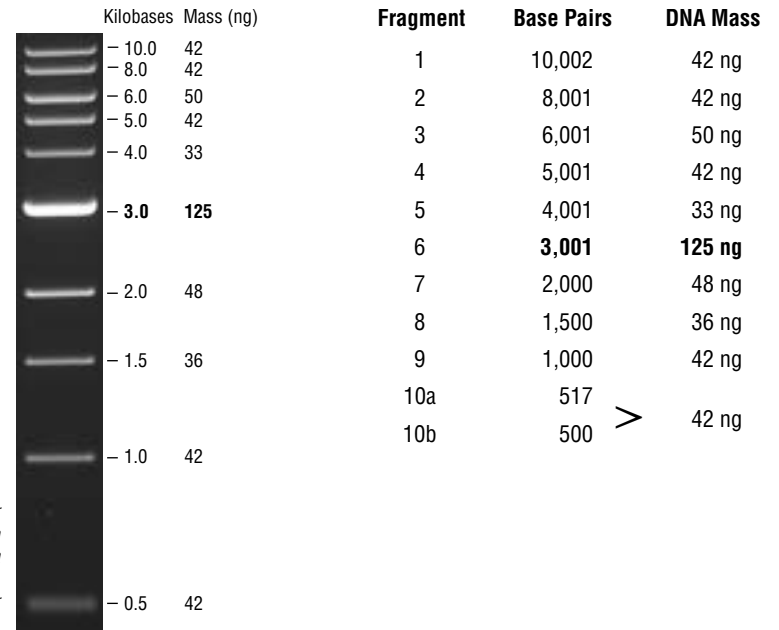
The DNA Ladder consists of proprietary plasmids which are digested to completion with appropriate restriction enzymes to yield 10 bands suitable for use as molecular weight standards for agarose gel electrophoresis. The digested DNA includes

Ready-to-load, Stable at 25°C

fragments ranging from 0.5–10.0 kilobases. The 3.0 kb fragment has increased intensity to serve as reference bands.

Supplied in: 2.5% Ficoll-400, 11 mM EDTA, 3.3 mM Tris-HCl (pH 8.0 @ 25°C), 0.017% SDS and 0.015% bromophenol blue.

Usage Recommendation: We recommend loading 10 µl (0.5 µg) of Quick-Load 1 kb DNA Ladder per gel lane. The Quick-Load 1 kb DNA Ladder is not intended for precise quantification of DNA mass but can be used for approximating the mass of DNA in comparably intense samples of similar size. The approximate mass of DNA in each of the bands in our Quick-Load 1 kb DNA Ladder is indicated assuming a 10 µl (0.5 µg) load.



(see other side)

CERTIFICATE OF ANALYSIS

Preparation of DNA: The double-stranded DNA is digested to completion with appropriate restriction enzymes, phenol extracted and equilibrated in storage buffer.

Notes:

Quick-Load 1 kb DNA Ladder is stable for at least 6 months at 25°C.

For long term storage, store at 4°C or –20°C. If stored at –20°C, mix well after thawing.

Reference: Sambrook, J., Fritsch, E. F. and Maniatis, T. (1989). *Molecular Cloning: A Laboratory Manual*, (2nd ed.), (pp. 10.51–10.67). Cold Spring Harbor: Cold Spring Harbor Laboratory Press.

Preparation of DNA: The double-stranded DNA is digested to completion with appropriate restriction enzymes, phenol extracted and equilibrated in storage buffer.

Notes:

Quick-Load 1 kb DNA Ladder is stable for at least 6 months at 25°C.

For long term storage, store at 4°C or –20°C. If stored at –20°C, mix well after thawing.

Reference: Sambrook, J., Fritsch, E. F. and Maniatis, T. (1989). *Molecular Cloning: A Laboratory Manual*, (2nd ed.), (pp. 10.51–10.67). Cold Spring Harbor: Cold Spring Harbor Laboratory Press.