

## Cre Recombinase



1-800-632-7799  
info@neb.com  
www.neb.com



M0298S 008151216121

# M0298S



**50 units**      **1,000 U/ml**      **Lot: 0081512**  
**RECOMBINANT**    **Store at -20°C**    **Exp: 12/16**

**Description:** Cre Recombinase is a Type I topoisomerase from bacteriophage P1 that catalyzes the site-specific recombination of DNA between *loxP* sites (1). The enzyme requires no energy cofactors and Cre-mediated recombination quickly reaches equilibrium between substrate and reaction products (2). The *loxP* recognition element is a 34 bp sequence comprised of two 13 bp

**Storage Buffer  
now includes BSA**

inverted repeats flanking an 8 bp spacer region which confers directionality (3). Recombination products depend on the location and relative orientation of the *loxP* sites. Two DNA species containing single *loxP* sites will be fused. DNA between directly repeated *loxP* sites will be excised in circular form while DNA between opposing *loxP* sites will be inverted with respect to external sequences.

**Source:** Purified from an *E. coli* strain carrying a plasmid encoding Cre Recombinase from bacteriophage P1 with additional N-terminal Ala and Gly residues (4).

### Applications:

- Excision of DNA between two *loxP* sites
- Fusion of DNA molecules containing *loxP* sites
- Inversion of DNA between *loxP* sites

Supplied in: 15 mM Tris (pH 8.0), 250 mM NaCl, 0.3 mg/ml BSA and 50% glycerol.

### Reagents Supplied with Enzyme:

10X Cre Recombinase Reaction Buffer, Control DNA (linearized pLox2+) (4).

inverted repeats flanking an 8 bp spacer region which confers directionality (3). Recombination products depend on the location and relative orientation of the *loxP* sites. Two DNA species containing single *loxP* sites will be fused. DNA between directly repeated *loxP* sites will be excised in circular form while DNA between opposing *loxP* sites will be inverted with respect to external sequences.

**Source:** Purified from an *E. coli* strain carrying a plasmid encoding Cre Recombinase from bacteriophage P1 with additional N-terminal Ala and Gly residues (4).

### Applications:

- Excision of DNA between two *loxP* sites
- Fusion of DNA molecules containing *loxP* sites
- Inversion of DNA between *loxP* sites

Supplied in: 15 mM Tris (pH 8.0), 250 mM NaCl, 0.3 mg/ml BSA and 50% glycerol.

### Reagents Supplied with Enzyme:

10X Cre Recombinase Reaction Buffer, Control DNA (linearized pLox2+) (4).

**Reaction Conditions:** 1X Cre Recombinase Reaction Buffer. Incubate at 37°C.

### 1X Cre Recombinase Buffer:

33 mM NaCl  
10 mM MgCl<sub>2</sub>  
50 mM Tris-HCl  
(pH 7.5 @ 25°C)

**Control DNA:** Linearized pLox2+ is 3,625 bp in length, with a *loxP* site approximately 400 bp from each end. Between the *loxP* sites lie an origin of replication and an ampicillin-resistance gene. Recombination between these *loxP* sites produces a circular (2,787 bp), ampicillin-resistant plasmid (which migrates at approximately 1.7 kb on a 0.8% agarose gel) and one 838 bp DNA fragment.

**Unit Definition:** One unit is defined as the amount of enzyme necessary to produce maximal site-specific recombination of 0.25 µg pLox2+ control DNA in 30 minutes at 37°C in a total reaction volume of 50 µl. Maximal recombination is determined by agarose gel analysis and by transformation of reactions followed by selection on ampicillin plates.

**Reaction Conditions:** 1X Cre Recombinase Reaction Buffer. Incubate at 37°C.

### 1X Cre Recombinase Buffer:

33 mM NaCl  
10 mM MgCl<sub>2</sub>  
50 mM Tris-HCl  
(pH 7.5 @ 25°C)

**Control DNA:** Linearized pLox2+ is 3,625 bp in length, with a *loxP* site approximately 400 bp from each end. Between the *loxP* sites lie an origin of replication and an ampicillin-resistance gene. Recombination between these *loxP* sites produces a circular (2,787 bp), ampicillin-resistant plasmid (which migrates at approximately 1.7 kb on a 0.8% agarose gel) and one 838 bp DNA fragment.

**Unit Definition:** One unit is defined as the amount of enzyme necessary to produce maximal site-specific recombination of 0.25 µg pLox2+ control DNA in 30 minutes at 37°C in a total reaction volume of 50 µl. Maximal recombination is determined by agarose gel analysis and by transformation of reactions followed by selection on ampicillin plates.

### Quality Control Assays

**16-Hour Incubation:** Incubation of 10 units of Cre Recombinase with 1 µg of φX174 RF I DNA (HaeIII digest) in 1X Cre Recombinase Reaction Buffer for 16 hours at 37°C resulted in no detectable exonuclease or endonuclease contamination.

**Exonuclease Activity:** Incubation of 10 units of enzyme with 1 µg sonicated [<sup>3</sup>H] DNA (10<sup>5</sup> cpm/µg) for 4 hours at 37°C in 50 µl reaction buffer released < 0.1% radioactivity.

**Heat Inactivation:** 40 units of enzyme were inactivated by incubation at 70°C for 10 minutes.

### Notes on Use:

- Incubation of the Cre Recombinase reaction mix at 70°C for 10 minutes is recommended before agarose gel analysis.
- Because the Cre Recombinase reaction is an equilibrium reaction, we observe 20–30% recombination on our loxP 2+ control substrate (Fig. 1). This modest yield produces a faint band on an ethidium bromide stained gel and the concomitant reduction in substrate staining intensity.

(See other side)

CERTIFICATE OF ANALYSIS

## Cre Recombinase



1-800-632-7799  
info@neb.com  
www.neb.com



M0298S 008151216121

# M0298S



**50 units**      **1,000 U/ml**      **Lot: 0081512**  
**RECOMBINANT**    **Store at -20°C**    **Exp: 12/16**

**Description:** Cre Recombinase is a Type I topoisomerase from bacteriophage P1 that catalyzes the site-specific recombination of DNA between *loxP* sites (1). The enzyme requires no energy cofactors and Cre-mediated recombination quickly reaches equilibrium between substrate and reaction products (2). The *loxP* recognition element is a 34 bp sequence comprised of two 13 bp

**Storage Buffer  
now includes BSA**

inverted repeats flanking an 8 bp spacer region which confers directionality (3). Recombination products depend on the location and relative orientation of the *loxP* sites. Two DNA species containing single *loxP* sites will be fused. DNA between directly repeated *loxP* sites will be excised in circular form while DNA between opposing *loxP* sites will be inverted with respect to external sequences.

**Source:** Purified from an *E. coli* strain carrying a plasmid encoding Cre Recombinase from bacteriophage P1 with additional N-terminal Ala and Gly residues (4).

### Applications:

- Excision of DNA between two *loxP* sites
- Fusion of DNA molecules containing *loxP* sites
- Inversion of DNA between *loxP* sites

Supplied in: 15 mM Tris (pH 8.0), 250 mM NaCl, 0.3 mg/ml BSA and 50% glycerol.

### Reagents Supplied with Enzyme:

10X Cre Recombinase Reaction Buffer, Control DNA (linearized pLox2+) (4).

**Reaction Conditions:** 1X Cre Recombinase Reaction Buffer. Incubate at 37°C.

### 1X Cre Recombinase Buffer:

33 mM NaCl  
10 mM MgCl<sub>2</sub>  
50 mM Tris-HCl  
(pH 7.5 @ 25°C)

**Control DNA:** Linearized pLox2+ is 3,625 bp in length, with a *loxP* site approximately 400 bp from each end. Between the *loxP* sites lie an origin of replication and an ampicillin-resistance gene. Recombination between these *loxP* sites produces a circular (2,787 bp), ampicillin-resistant plasmid (which migrates at approximately 1.7 kb on a 0.8% agarose gel) and one 838 bp DNA fragment.

**Unit Definition:** One unit is defined as the amount of enzyme necessary to produce maximal site-specific recombination of 0.25 µg pLox2+ control DNA in 30 minutes at 37°C in a total reaction volume of 50 µl. Maximal recombination is determined by agarose gel analysis and by transformation of reactions followed by selection on ampicillin plates.

### Quality Control Assays

**16-Hour Incubation:** Incubation of 10 units of Cre Recombinase with 1 µg of φX174 RF I DNA (HaeIII digest) in 1X Cre Recombinase Reaction Buffer for 16 hours at 37°C resulted in no detectable exonuclease or endonuclease contamination.

**Exonuclease Activity:** Incubation of 10 units of enzyme with 1 µg sonicated [<sup>3</sup>H] DNA (10<sup>5</sup> cpm/µg) for 4 hours at 37°C in 50 µl reaction buffer released < 0.1% radioactivity.

**Heat Inactivation:** 40 units of enzyme were inactivated by incubation at 70°C for 10 minutes.

### Notes on Use:

- Incubation of the Cre Recombinase reaction mix at 70°C for 10 minutes is recommended before agarose gel analysis.
- Because the Cre Recombinase reaction is an equilibrium reaction, we observe 20–30% recombination on our loxP 2+ control substrate (Fig. 1). This modest yield produces a faint band on an ethidium bromide stained gel and the concomitant reduction in substrate staining intensity.

(See other side)

CERTIFICATE OF ANALYSIS

- Longer incubation times will not improve recombination, and instead, will likely lead to higher molecular weight recombination products.
- Increasing the amount of Cre Recombinase in the reaction can inhibit recombination by forming *loxP* dependent Cre-DNA aggregates.

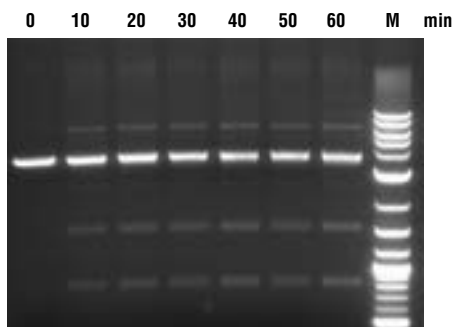


Figure 1. Cre Recombinase Reaction with *loxP* 2+ control substrate. The reactions yields a 20–30 % recombination. Marker M is the 2-Log DNA Ladder (NEB# N0469)

Page 2 (M0298)

- Longer incubation times will not improve recombination, and instead, will likely lead to higher molecular weight recombination products.
- Increasing the amount of Cre Recombinase in the reaction can inhibit recombination by forming *loxP* dependent Cre-DNA aggregates.

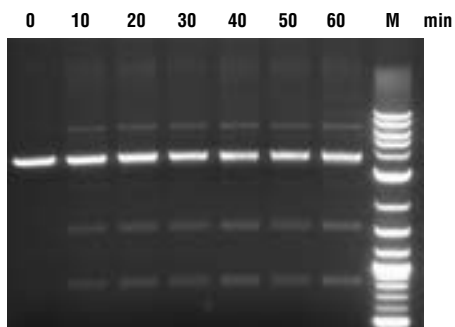


Figure 1. Cre Recombinase Reaction with *loxP* 2+ control substrate. The reactions yields a 20–30 % recombination. Marker M is the 2-Log DNA Ladder (NEB# N0469)

Page 2 (M0298)

#### References:

1. Abremski, K. and R. Hoess (1984) *J. Biol. Chem.* 259, 1509–1514.
2. Abremski, K. et al. (1983) *Cell* 32, 1301–1311.
3. Metzger, D. and Feil, R. (1999) *Curr. Opin. Biotechnol.* 10, 470–476.
4. Cantor, E. and Chong, S. (2001) *Protein Expression and Purification* 22, 135–140.



NEW ENGLAND BIOLABS® is a registered trademark of New England Biolabs, Inc.

This product is intended for research purposes only. This product is not intended to be used for therapeutic or diagnostic purposes in humans or animals.

#### References:

1. Abremski, K. and R. Hoess (1984) *J. Biol. Chem.* 259, 1509–1514.
2. Abremski, K. et al. (1983) *Cell* 32, 1301–1311.
3. Metzger, D. and Feil, R. (1999) *Curr. Opin. Biotechnol.* 10, 470–476.
4. Cantor, E. and Chong, S. (2001) *Protein Expression and Purification* 22, 135–140.



NEW ENGLAND BIOLABS® is a registered trademark of New England Biolabs, Inc.

This product is intended for research purposes only. This product is not intended to be used for therapeutic or diagnostic purposes in humans or animals.