

# Cre Recombinase



1-800-632-7799  
info@neb.com  
www.neb.com



M0298S 008140215021

## M0298S



**50 units**      **1,000 U/ml**      **Lot: 0081402**  
**RECOMBINANT**    **Store at -20°C**    **Exp: 2/15**

**Description:** Cre Recombinase is a Type I topoisomerase from bacteriophage P1 that catalyzes the site-specific recombination of DNA between *loxP* sites (1). The enzyme requires no energy cofactors and Cre-mediated recombination quickly reaches equilibrium between substrate and reaction products (2). The *loxP* recognition element is a 34 bp

**Storage Buffer  
now includes BSA**

sequence comprised of two 13 bp inverted repeats flanking an 8 bp spacer region which confers directionality (3). Recombination products depend on the location and relative orientation of the *loxP* sites. Two DNA species containing single *loxP* sites will be fused. DNA between directly repeated *loxP* sites will be excised in circular form while DNA between opposing *loxP* sites will be inverted with respect to external sequences.

**Source:** Purified from an *E. coli* strain carrying a plasmid encoding Cre Recombinase from bacteriophage P1 with additional N-terminal Ala and Gly residues (4).

### Applications:

- Excision of DNA between two *loxP* sites
- Fusion of DNA molecules containing *loxP* sites
- Inversion of DNA between *loxP* sites

Supplied in: 15 mM Tris (pH 8.0), 250 mM NaCl, 0.3 mg/ml BSA and 50% glycerol.

### Reagents Supplied with Enzyme:

10X Cre Recombinase Reaction Buffer, Control DNA (linearized pLox2+) (4).

**Reaction Conditions:** 1X Cre Recombinase Reaction Buffer. Incubate at 37°C.

### 1X Cre Recombinase Buffer:

33 mM NaCl  
10 mM MgCl<sub>2</sub>  
50 mM Tris-HCl  
(pH 7.5 @ 25°C)

**Control DNA:** Linearized pLox2+ is 3,625 bp in length, with a *loxP* site approximately 400 bp from each end. Between the *loxP* sites lie an origin of replication and an ampicillin-resistance gene. Recombination between these *loxP* sites produces a circular (2,787 bp), ampicillin-resistant plasmid (which migrates at approximately 1.7 kb on a 0.8% agarose gel) and one 838 bp DNA fragment.

**Unit Definition:** One unit is defined as the amount of enzyme necessary to produce maximal site-specific recombination of 0.25 µg pLox2+ control DNA in 30 minutes at 37°C in a total reaction volume of 50 µl. Maximal recombination is determined by agarose gel analysis and by transformation of reactions followed by selection on ampicillin plates.

**Reaction Conditions:** 1X Cre Recombinase Reaction Buffer. Incubate at 37°C.

### 1X Cre Recombinase Buffer:

33 mM NaCl  
10 mM MgCl<sub>2</sub>  
50 mM Tris-HCl  
(pH 7.5 @ 25°C)

**Control DNA:** Linearized pLox2+ is 3,625 bp in length, with a *loxP* site approximately 400 bp from each end. Between the *loxP* sites lie an origin of replication and an ampicillin-resistance gene. Recombination between these *loxP* sites produces a circular (2,787 bp), ampicillin-resistant plasmid (which migrates at approximately 1.7 kb on a 0.8% agarose gel) and one 838 bp DNA fragment.

**Unit Definition:** One unit is defined as the amount of enzyme necessary to produce maximal site-specific recombination of 0.25 µg pLox2+ control DNA in 30 minutes at 37°C in a total reaction volume of 50 µl. Maximal recombination is determined by agarose gel analysis and by transformation of reactions followed by selection on ampicillin plates.

### Quality Control Assays

**16-Hour Incubation:** Incubation of 10 units of Cre Recombinase with 1 µg of φX174 RF I DNA (HaeIII digest) in 1X Cre Recombinase Reaction Buffer for 16 hours at 37°C resulted in no detectable exonuclease or endonuclease contamination.

**Exonuclease Activity:** Incubation of 10 units of enzyme with 1 µg sonicated [<sup>3</sup>H] DNA (10<sup>5</sup> cpm/µg) for 4 hours at 37°C in 50 µl reaction buffer released < 0.1% radioactivity.

**Heat Inactivation:** 40 units of enzyme were inactivated by incubation at 70°C for 10 minutes.

### Notes on Use:

- Incubation of the Cre Recombinase reaction mix at 70°C for 10 minutes is recommended before agarose gel analysis.
- Because the Cre Recombinase reaction is an equilibrium reaction, we observe 20–30% recombination on our loxP 2+ control substrate (Fig. 1). This modest yield produces a faint band on an ethidium bromide stained gel and the concomitant reduction in substrate staining intensity.

(See other side)

CERTIFICATE OF ANALYSIS

# Cre Recombinase



1-800-632-7799  
info@neb.com  
www.neb.com



M0298S 008140215021

## M0298S



**50 units**      **1,000 U/ml**      **Lot: 0081402**  
**RECOMBINANT**    **Store at -20°C**    **Exp: 2/15**

**Description:** Cre Recombinase is a Type I topoisomerase from bacteriophage P1 that catalyzes the site-specific recombination of DNA between *loxP* sites (1). The enzyme requires no energy cofactors and Cre-mediated recombination quickly reaches equilibrium between substrate and reaction products (2). The *loxP* recognition element is a 34 bp

**Storage Buffer  
now includes BSA**

sequence comprised of two 13 bp inverted repeats flanking an 8 bp spacer region which confers directionality (3). Recombination products depend on the location and relative orientation of the *loxP* sites. Two DNA species containing single *loxP* sites will be fused. DNA between directly repeated *loxP* sites will be excised in circular form while DNA between opposing *loxP* sites will be inverted with respect to external sequences.

**Source:** Purified from an *E. coli* strain carrying a plasmid encoding Cre Recombinase from bacteriophage P1 with additional N-terminal Ala and Gly residues (4).

### Applications:

- Excision of DNA between two *loxP* sites
- Fusion of DNA molecules containing *loxP* sites
- Inversion of DNA between *loxP* sites

Supplied in: 15 mM Tris (pH 8.0), 250 mM NaCl, 0.3 mg/ml BSA and 50% glycerol.

### Reagents Supplied with Enzyme:

10X Cre Recombinase Reaction Buffer, Control DNA (linearized pLox2+) (4).

### Quality Control Assays

**16-Hour Incubation:** Incubation of 10 units of Cre Recombinase with 1 µg of φX174 RF I DNA (HaeIII digest) in 1X Cre Recombinase Reaction Buffer for 16 hours at 37°C resulted in no detectable exonuclease or endonuclease contamination.

**Exonuclease Activity:** Incubation of 10 units of enzyme with 1 µg sonicated [<sup>3</sup>H] DNA (10<sup>5</sup> cpm/µg) for 4 hours at 37°C in 50 µl reaction buffer released < 0.1% radioactivity.

**Heat Inactivation:** 40 units of enzyme were inactivated by incubation at 70°C for 10 minutes.

### Notes on Use:

- Incubation of the Cre Recombinase reaction mix at 70°C for 10 minutes is recommended before agarose gel analysis.
- Because the Cre Recombinase reaction is an equilibrium reaction, we observe 20–30% recombination on our loxP 2+ control substrate (Fig. 1). This modest yield produces a faint band on an ethidium bromide stained gel and the concomitant reduction in substrate staining intensity.

(See other side)

CERTIFICATE OF ANALYSIS

- Longer incubation times will not improve recombination, and instead, will likely lead to higher molecular weight recombination products.
- Increasing the amount of Cre Recombinase in the reaction can inhibit recombination by forming *loxP* dependent Cre-DNA aggregates.

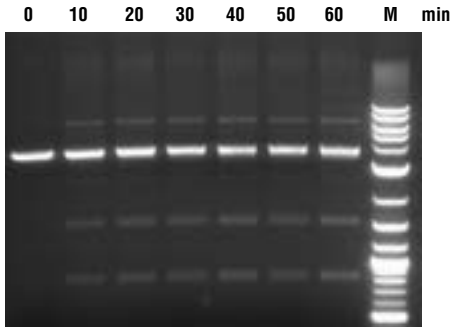


Figure 1. Cre Recombinase Reaction with *loxP* 2+ control substrate. The reactions yields a 20–30 % recombination. Marker M is the 2-Log DNA Ladder (NEB# N0469)

Page 2 (M0298)

- Longer incubation times will not improve recombination, and instead, will likely lead to higher molecular weight recombination products.
- Increasing the amount of Cre Recombinase in the reaction can inhibit recombination by forming *loxP* dependent Cre-DNA aggregates.

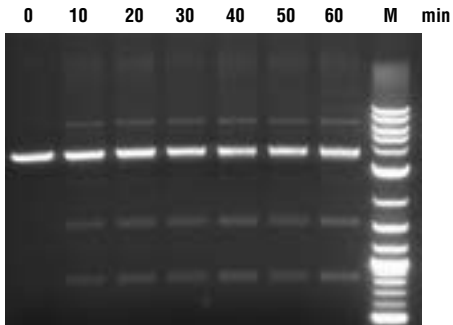


Figure 1. Cre Recombinase Reaction with *loxP* 2+ control substrate. The reactions yields a 20–30 % recombination. Marker M is the 2-Log DNA Ladder (NEB# N0469)

Page 2 (M0298)

#### References:

1. Abremski, K. and R. Hoess (1984) *J. Biol. Chem.* 259, 1509–1514.
2. Abremski, K. et al. (1983) *Cell* 32, 1301–1311.
3. Metzger, D. and Feil, R. (1999) *Curr. Opin. Biotechnol.* 10, 470–476.
4. Cantor, E. and Chong, S. (2001) *Protein Expression and Purification* 22, 135–140.

#### References:

1. Abremski, K. and R. Hoess (1984) *J. Biol. Chem.* 259, 1509–1514.
2. Abremski, K. et al. (1983) *Cell* 32, 1301–1311.
3. Metzger, D. and Feil, R. (1999) *Curr. Opin. Biotechnol.* 10, 470–476.
4. Cantor, E. and Chong, S. (2001) *Protein Expression and Purification* 22, 135–140.