

Anti GLuc Antibody



1-800-632-7799
info@neb.com
www.neb.com



E8023S 005150417041

E8023S

0.2 ml Lot: 0051504

Store at -20°C Exp: 4/17

Description: Anti GLuc Antibody is an IgG fraction from rabbit serum immunized with recombinant *Gaussia* luciferase (GLuc). It can detect GLuc secreted from cells or in cell lysates.

Supplied in: 0.01 mM Phosphate (pH 7.4), 0.154 mM NaCl and 50% glycerol.

LABORATORY REAGENT – FOR RESEARCH USE ONLY

Specificity: Tested in extracts from mammalian cells transfected with *Gaussia* luciferase expression plasmids.

Recommended Dilution: 1:1000

Quality Assurance: The Anti-GLuc Antibody is used in a Western analysis detecting the presence of *Gaussia* Luciferase in the growth medium and in the cell lysate after transfection of cells (mammalian) with a GLuc-expressing vector.

Protocol for Western Analysis:

1. After transfer, incubate membrane with 25 ml of 1X TBS/T for 5 minutes at room temperature
2. Incubate membrane in 25 ml of Blocking Buffer for 1 hour at room temperature.
3. Incubate membrane in 12 ml of Primary Antibody Solution for 1 hour at room temperature (or overnight at 4°C) with gentle agitation.
4. Wash with 25 ml of TBS/T for 5 minutes. Discard and repeat wash step two more times.

Specificity: Tested in extracts from mammalian cells transfected with *Gaussia* luciferase expression plasmids.

Recommended Dilution: 1:1000

Quality Assurance: The Anti-GLuc Antibody is used in a Western analysis detecting the presence of *Gaussia* Luciferase in the growth medium and in the cell lysate after transfection of cells (mammalian) with a GLuc-expressing vector.

Protocol for Western Analysis:

1. After transfer, incubate membrane with 25 ml of 1X TBS/T for 5 minutes at room temperature
2. Incubate membrane in 25 ml of Blocking Buffer for 1 hour at room temperature.
3. Incubate membrane in 12 ml of Primary Antibody Solution for 1 hour at room temperature (or overnight at 4°C) with gentle agitation.
4. Wash with 25 ml of TBS/T for 5 minutes. Discard and repeat wash step two more times.

5. Incubate membrane with HRP-conjugated Secondary Antibody Solution for 1 hour at room temperature.
6. Wash with 25 ml of TBS/T for 5 minutes. Discard and repeat wash step two more times.
7. Proceed with detection, using any HRP-compatible chemiluminescent detection kit.

Solutions Required for Western Analysis:

10X TBS (per liter):

24.2g Tris base
80g NaCl
Milli-Q® water
pH 7.6

1X TBS/T (per liter):

100 ml 10X TBS
1 ml Tween-20
800 ml Milli-Q water

Blocking Buffer (in 1X TBS/T):

2.5% BSA
2.5% non-fat milk

Primary Antibody Solution:

1:2000 dilution of Anti-GLuc Antibody in Blocking Buffer

5. Incubate membrane with HRP-conjugated Secondary Antibody Solution for 1 hour at room temperature.
6. Wash with 25 ml of TBS/T for 5 minutes. Discard and repeat wash step two more times.
7. Proceed with detection, using any HRP-compatible chemiluminescent detection kit.

Solutions Required for Western Analysis:

10X TBS (per liter):

24.2g Tris base
80g NaCl
Milli-Q® water
pH 7.6

1X TBS/T (per liter):

100 ml 10X TBS
1 ml Tween-20
800 ml Milli-Q water

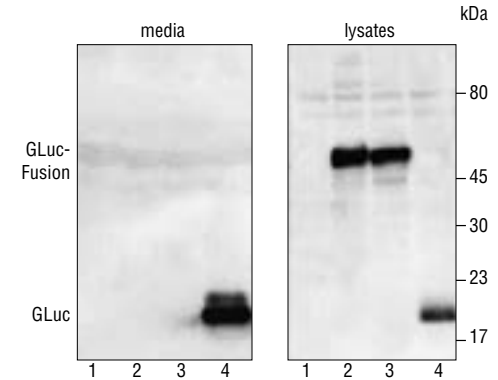
Blocking Buffer (in 1X TBS/T):

2.5% BSA
2.5% non-fat milk

Primary Antibody Solution:

1:2000 dilution of Anti-GLuc Antibody in Blocking Buffer

HRP-conjugated Secondary Antibody Solution: 1:2000 dilution of Anti-rabbit IgG in Blocking Buffer



Western blot with anti-GLuc Antibody of proteins expressed in HEK-293 cells. GLuc and a non-secreted GLuc-fusion protein (~50 kDa) were detected in cell culture media and cell lysates. Lane 1: Untransfected cells; Lanes 2&3: GLuc-fusion; Lane 4: GLuc. The gel was blotted onto PVDF membrane; GLuc Antibody was diluted 1:5000 and detected with a chemiluminescent substrate and HRP-coupled anti-rabbit secondary antibody.

CERTIFICATE OF ANALYSIS

Anti GLuc Antibody



1-800-632-7799
info@neb.com
www.neb.com



E8023S 005150417041

E8023S

0.2 ml Lot: 0051504

Store at -20°C Exp: 4/17

Description: Anti GLuc Antibody is an IgG fraction from rabbit serum immunized with recombinant *Gaussia* luciferase (GLuc). It can detect GLuc secreted from cells or in cell lysates.

Supplied in: 0.01 mM Phosphate (pH 7.4), 0.154 mM NaCl and 50% glycerol.

LABORATORY REAGENT – FOR RESEARCH USE ONLY

Specificity: Tested in extracts from mammalian cells transfected with *Gaussia* luciferase expression plasmids.

Recommended Dilution: 1:1000

Quality Assurance: The Anti-GLuc Antibody is used in a Western analysis detecting the presence of *Gaussia* Luciferase in the growth medium and in the cell lysate after transfection of cells (mammalian) with a GLuc-expressing vector.

Protocol for Western Analysis:

1. After transfer, incubate membrane with 25 ml of 1X TBS/T for 5 minutes at room temperature
2. Incubate membrane in 25 ml of Blocking Buffer for 1 hour at room temperature.
3. Incubate membrane in 12 ml of Primary Antibody Solution for 1 hour at room temperature (or overnight at 4°C) with gentle agitation.
4. Wash with 25 ml of TBS/T for 5 minutes. Discard and repeat wash step two more times.

5. Incubate membrane with HRP-conjugated Secondary Antibody Solution for 1 hour at room temperature.
6. Wash with 25 ml of TBS/T for 5 minutes. Discard and repeat wash step two more times.
7. Proceed with detection, using any HRP-compatible chemiluminescent detection kit.

Solutions Required for Western Analysis:

10X TBS (per liter):

24.2g Tris base
80g NaCl
Milli-Q® water
pH 7.6

1X TBS/T (per liter):

100 ml 10X TBS
1 ml Tween-20
800 ml Milli-Q water

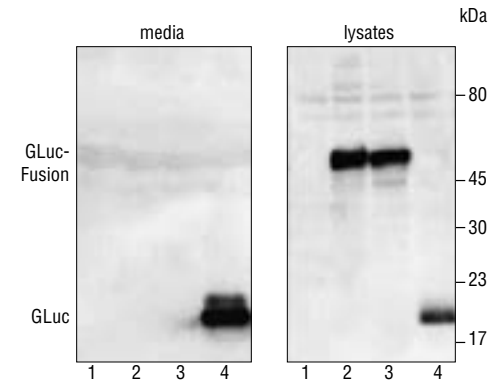
Blocking Buffer (in 1X TBS/T):

2.5% BSA
2.5% non-fat milk

Primary Antibody Solution:

1:2000 dilution of Anti-GLuc Antibody in Blocking Buffer

HRP-conjugated Secondary Antibody Solution: 1:2000 dilution of Anti-rabbit IgG in Blocking Buffer



Western blot with anti-GLuc Antibody of proteins expressed in HEK-293 cells. GLuc and a non-secreted GLuc-fusion protein (~50 kDa) were detected in cell culture media and cell lysates. Lane 1: Untransfected cells; Lanes 2&3: GLuc-fusion; Lane 4: GLuc. The gel was blotted onto PVDF membrane; GLuc Antibody was diluted 1:5000 and detected with a chemiluminescent substrate and HRP-coupled anti-rabbit secondary antibody.

CERTIFICATE OF ANALYSIS



NEW ENGLAND BIOLABS® is a registered trademark of New England Biolabs, Inc.

MILLI-Q® is a registered trademark of Miliipore Corporation.

This product is intended for research purposes only. This product is not intended to be used for therapeutic or diagnostic purposes in humans or animals.



NEW ENGLAND BIOLABS® is a registered trademark of New England Biolabs, Inc.

MILLI-Q® is a registered trademark of Miliipore Corporation.

This product is intended for research purposes only. This product is not intended to be used for therapeutic or diagnostic purposes in humans or animals.