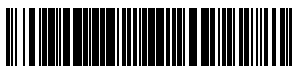


Anti GLuc Antibody



1-800-632-7799
info@neb.com
www.neb.com



E8023S 005131215121

E8023S

0.2 ml Lot: 0051312

Store at -20°C Exp: 12/15

Description: Anti GLuc Antibody is an IgG fraction from rabbit serum immunized with recombinant *Gaussia* luciferase (GLuc). It can detect GLuc secreted from cells or in cell lysates.

Supplied in: 0.01 mM Phosphate (pH 7.4), 0.154 mM NaCl and 50% glycerol.

Specificity: Tested in extracts from mammalian cells transfected with *Gaussia* luciferase expression plasmids.

Recommended Dilution: 1:1000

Quality Assurance: The Anti-GLuc Antibody is used in a Western analysis detecting the presence of *Gaussia* Luciferase in the growth medium and in the cell lysate after transfection of cells (mammalian) with a GLuc-expressing vector.

Protocol for Western Analysis:

1. After transfer, incubate membrane with 25 ml of 1X TBS/T for 5 minutes at room temperature
2. Incubate membrane in 25 ml of Blocking Buffer for 1 hour at room temperature.
3. Incubate membrane in 12 ml of Primary Antibody Solution for 1 hour at room temperature (or overnight at 4°C) with gentle agitation.
4. Wash with 25 ml of TBS/T for 5 minutes. Discard and repeat wash step two more times.
5. Incubate membrane with HRP-conjugated Secondary Antibody Solution for 1 hour at room temperature.

6. Wash with 25 ml of TBS/T for 5 minutes. Discard and repeat wash step two more times.
7. Proceed with detection, using any HRP-compatible chemiluminescent detection kit.

Solutions Required for Western Analysis:

10X TBS (per liter):

24.2g Tris base
80g NaCl
Milli-Q™ water
pH 7.6

1X TBS/T (per liter):

100 ml 10X TBS
1 ml Tween-20
800 ml MilliQ water

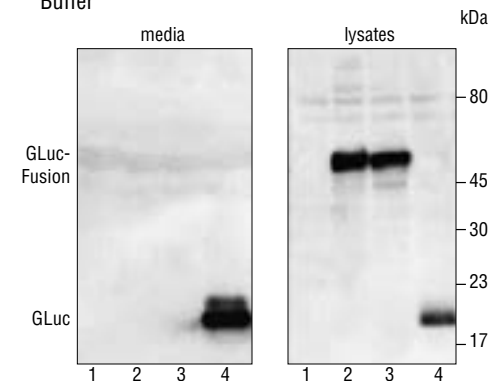
Blocking Buffer (in 1X TBS/T):

2.5% BSA
2.5% non-fat milk

Primary Antibody Solution:

1:2000 dilution of Anti-GLuc Antibody in Blocking Buffer

HRP-conjugated Secondary Antibody Solution:
1:2000 dilution of Anti-rabbit IgG in Blocking Buffer



Western blot with anti-GLuc Antibody of proteins expressed in HEK-293 cells. GLuc and a non-secreted GLuc-fusion protein (~50 kDa) were detected in cell culture media and cell lysates. Lane 1: Untransfected cells; Lanes 2&3: GLuc-fusion; Lane 4: GLuc. The gel was blotted onto PVDF membrane; GLuc Antibody was diluted 1:5000 and detected with a chemiluminescent substrate and HRP-coupled anti-rabbit secondary antibody.

CERTIFICATE OF ANALYSIS

Anti GLuc Antibody



1-800-632-7799
info@neb.com
www.neb.com



E8023S 005131215121

E8023S

0.2 ml Lot: 0051312

Store at -20°C Exp: 12/15

Description: Anti GLuc Antibody is an IgG fraction from rabbit serum immunized with recombinant *Gaussia* luciferase (GLuc). It can detect GLuc secreted from cells or in cell lysates.

Supplied in: 0.01 mM Phosphate (pH 7.4), 0.154 mM NaCl and 50% glycerol.

Specificity: Tested in extracts from mammalian cells transfected with *Gaussia* luciferase expression plasmids.

Recommended Dilution: 1:1000

Quality Assurance: The Anti-GLuc Antibody is used in a Western analysis detecting the presence of *Gaussia* Luciferase in the growth medium and in the cell lysate after transfection of cells (mammalian) with a GLuc-expressing vector.

Protocol for Western Analysis:

1. After transfer, incubate membrane with 25 ml of 1X TBS/T for 5 minutes at room temperature
2. Incubate membrane in 25 ml of Blocking Buffer for 1 hour at room temperature.
3. Incubate membrane in 12 ml of Primary Antibody Solution for 1 hour at room temperature (or overnight at 4°C) with gentle agitation.
4. Wash with 25 ml of TBS/T for 5 minutes. Discard and repeat wash step two more times.
5. Incubate membrane with HRP-conjugated Secondary Antibody Solution for 1 hour at room temperature.

6. Wash with 25 ml of TBS/T for 5 minutes. Discard and repeat wash step two more times.
7. Proceed with detection, using any HRP-compatible chemiluminescent detection kit.

Solutions Required for Western Analysis:

10X TBS (per liter):

24.2g Tris base
80g NaCl
Milli-Q™ water
pH 7.6

1X TBS/T (per liter):

100 ml 10X TBS
1 ml Tween-20
800 ml MilliQ water

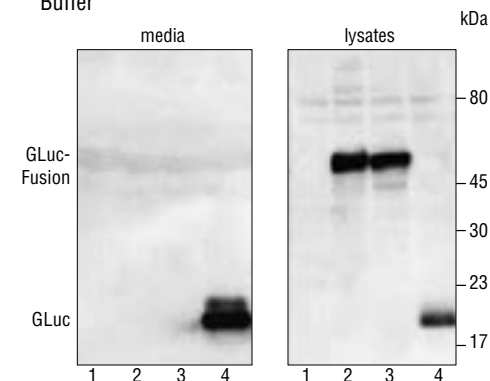
Blocking Buffer (in 1X TBS/T):

2.5% BSA
2.5% non-fat milk

Primary Antibody Solution:

1:2000 dilution of Anti-GLuc Antibody in Blocking Buffer

HRP-conjugated Secondary Antibody Solution:
1:2000 dilution of Anti-rabbit IgG in Blocking Buffer



Western blot with anti-GLuc Antibody of proteins expressed in HEK-293 cells. GLuc and a non-secreted GLuc-fusion protein (~50 kDa) were detected in cell culture media and cell lysates. Lane 1: Untransfected cells; Lanes 2&3: GLuc-fusion; Lane 4: GLuc. The gel was blotted onto PVDF membrane; GLuc Antibody was diluted 1:5000 and detected with a chemiluminescent substrate and HRP-coupled anti-rabbit secondary antibody.

CERTIFICATE OF ANALYSIS